

## Standard Bearing

The following table shows the maximum theoretical radial loads that can be applied to the respective bearings, at a specified RPM, yielding an average life of 2,500 hours.

### BEARING TYPE A Standard Double Row

I.D.	O.D.	WIDTH
.313/.317	.870/.875	.498/.502

#### SINGLE (1) BEARING

Load (lbs)	Speed (rpm)
120	50
80	100
52	250
44	500
32	1,000

### BEARING TYPE B Standard Single Row

I.D.	O.D.	WIDTH
.500/.505	1.245/1.250	.370/.380

#### SINGLE (1) BEARING

Load (lbs)	Speed (rpm)
261	50
174	100
113	250
96	500
70	1,000

### BEARING TYPE C Standard Double Row

I.D.	O.D.	WIDTH
.500/.505	1.245/1.250	.745/.755

#### SINGLE (1) BEARING

Load (lbs)	Speed (rpm)
423	50
282	100
183	250
155	500
113	1,000

## Precision Bearing

The following table shows the maximum theoretical radial loads that can be applied to the respective bearings, at a specified RPM, yielding 1,000,000 revolutions or 500 hours of life. The bearings are shielded and pre-lubricated for life with grease.

### BEARING TYPE D Precision Single Row

I.D.	O.D.	WIDTH
.3122/.3125	.8747/.8750	.2766/.2813

#### DOUBLE (2) BEARINGS

Load (lbs)	Speed (rpm)
—	33-1/3
740	50
590	100
410	250
350	500
260	1,000

### BEARING TYPE E Precision Sealed Single Row

I.D.	O.D.	WIDTH
.3122/.3125	.8747/.8750	.3383/.3430

#### DOUBLE (2) BEARINGS

Load (lbs)	Speed (rpm)
—	33-1/3
740	50
590	100
410	250
350	500
260	1,000

### BEARING TYPE F Precision Single Row

I.D.	O.D.	WIDTH
.4997/.5000	1.1247/1.1250	.3703/.3750

#### SINGLE (1) BEARING

Load (lbs)	Speed (rpm)
884	33-1/3
772	50
613	100
452	250
358	500
284	1,000

#### DOUBLE (2) BEARINGS

Load (lbs)	Speed (rpm)
1,768	33-1/3
1,544	50
1,226	100
904	250
716	500
568	1,000

### BEARING TYPE G Precision Sealed Single Row

I.D.	O.D.	WIDTH
.4997/.5000	1.1247/1.1250	.3703/.3750

#### SINGLE (1) BEARING

Load (lbs)	Speed (rpm)
884	33-1/3
772	50
613	100
452	250
358	500
284	1,000

#### DOUBLE (2) BEARINGS

Load (lbs)	Speed (rpm)
1,768	33-1/3
1,544	50
1,226	100
904	250
716	500
568	1,000

## Clutch Bearing

The following table shows the maximum theoretical radial loads that can be applied to the respective bearings, at a specified RPM, yielding 1,000,000 revolutions or 500 hours of life. The bearings are shielded and pre-lubricated for life with grease.

### BEARING TYPE H Roller Clutch Bearing

I.D.	O.D.	WIDTH
.3745/.3750	.6245/.6255	.865/.875

#### SINGLE (1) BEARING

Load (lbs)	Speed (rpm)
367	33-1/3
321	50
254	100
187	250
149	500
118	1,000

### BEARING TYPE I Roller Clutch Bearing

I.D.	O.D.	WIDTH
.6245/.6250	.8745/.8755	.990/1.000

#### SINGLE (1) BEARING

Load (lbs)	Speed (rpm)
610	33-1/3
533	50
423	100
312	250
247	500
196	1,000

Distributed by  
**AJACS**  
 1-800-968-6868

## Roller and Bumper Material Information

Base Elastomer	Chemical Name	Advantages	Disadvantages	Max. Service Temp F°	Min. Service Temp F°
Neoprene Black	Chloroprene	Flame and weather resistant. Resists: gasoline, oil, ozone, high temp.	Affected by phosphate hydraulic fluids, aromatic hydrocarbons.	Continuous 200° Intermittent 250°	-40°
Urethane	Di-Isocyanate Polyurethane	Highest abrasion resistance, strength & load bearing. High elongation, hardness. Resistant to ozone & oxygen.	Affected by ether, esters, acid, aromatics, alkalis.	Continuous 200° Intermittent 250°	-65°
White Nitrile	Nitrile Butadiene	Resistant to gasoline, oil alcohol, abrasion.	Affected by degreaser solvents.	Continuous 175° Intermittent 225°	-60°

All durometer ratings are based on a Shore A rating.

### Durometer Guide:

Durometer 20 = Stiff Foam Rubber  
 Durometer 35 = Pencil Eraser  
 Durometer 60 = Auto Tire  
 Durometer 80 = Skateboard Wheel  
 Durometer 95 = Hockey Puck

### Urethane Color Guide:

Durometer 35 = Yellow  
 Durometer 60 = Blue  
 Durometer 80 = Red  
 Durometer 95 = Orange

All Nitrile Rollers and Bumpers are white. All Neoprene Rollers and Bumpers are black.

### Roller and Bumper Material Property Comparison Chart:

4 = Excellent 3 = Good 2 = Fair 1 = Poor

Property:	White Nitrile	Neoprene	Urethane
Tensile Strength	2	3.5	4
Ozone Resistance	1	2.5	4
Cut Resistance	2	3	4
Abrasion Resistance	2.5	3.5	4
Tear Strength	2	3	4

Resistance To:	White Nitrile	Neoprene	Urethane
Compression Set	2.5	3	3.5
ASTM #1 Oil	4	2.5	4
ASTM #2 Oil	4	2	4
Reference Fuel B	3.5	2	4
Ketones: MEK	1	2	1
Aromatics: Toluene	3.5	1.5	4
Aliphatics: Hexane	4	3	4
Ethyl Acetate	1.5	3	1.5
Cellosolve	2	4	1.5
Methylene Chloride	1	1	1
Trichloroethylene	1	1	1
DiethyleneGlycol	4	4	3
Isopropyl Alcohol	3.5	3.5	3
Caustics: 10% NaOH	3.5	3.5	1
Acids: H2S04	2	3	1



Solid rollers have a smooth surface and are permanently bonded to a steel insert. The steel insert provides rigidity and allows the user to customize the mounting configuration based on the application. Rollers are available in neoprene, nitrile and urethane materials with hardness ranging from 20 to 95 durometer. See page 6 for material and durometer specifications. Line drawings shown are not proportional for all parts. View and download part CAD models at [www.fairlaneproducts.com](http://www.fairlaneproducts.com).

**1.50" Dia. x 1.25" Width - 7/8" ID**

A	B	C			
1.50	1.25	.877/.880			
Durometer	Neoprene Part #	Nitrile Part #	Urethane Part #		
20	RR-215-20-R	RR-215-20W-R	-		
35	RR-215-35-R	RR-215-35W-R	RR-215-35UR-R		
60	RR-215-60-R	RR-215-60W-R	RR-215-60UR-R		
80	RR-215-80-R	RR-215-80W-R	RR-215-80UR-R		
95	-	-	RR-215-95UR-R		

**2.00" Dia. x .92" Width - 1-1/8" ID**

A	B	C			
2.00	.92	1.125/1.128			
Durometer	Neoprene Part #	Nitrile Part #	Urethane Part #		
20	RR-92020-20-RP	RR-92020-20W-RP	-		
35	RR-92020-35-RP	RR-92020-35W-RP	RR-92020-35UR-RP		
60	RR-92020-60-RP	RR-92020-60W-RP	RR-92020-60UR-RP		
80	RR-92020-80-RP	RR-92020-80W-RP	RR-92020-80UR-RP		
95	-	-	RR-92020-95UR-RP		

**2.00" Dia. x .92" Width - 1-1/4" ID**

A	B	C			
2.00	.92	1.252/1.256			
Durometer	Neoprene Part #	Nitrile Part #	Urethane Part #		
20	RR-92020-20-R	RR-92020-20W-R	-		
35	RR-92020-35-R	RR-92020-35W-R	RR-92020-35UR-R		
60	RR-92020-60-R	RR-92020-60W-R	RR-92020-60UR-R		
80	RR-92020-80-R	RR-92020-80W-R	RR-92020-80UR-R		
95	-	-	RR-92020-95UR-R		

**2.00" Dia. x 1.94" Width - 1-1/8" ID**

A	B	C			
2.00	1.94	1.125/1.128			
Durometer	Neoprene Part #	Nitrile Part #	Urethane Part #		
20	RR-2020-20-RP	RR-2020-20W-RP	-		
35	RR-2020-35-RP	RR-2020-35W-RP	RR-2020-35UR-RP		
60	RR-2020-60-RP	RR-2020-60W-RP	RR-2020-60UR-RP		
80	RR-2020-80-RP	RR-2020-80W-RP	RR-2020-80UR-RP		
95	-	-	RR-2020-95UR-RP		

**ROLLER ONLY - Solid Rollers (cont)****2.00" Dia. x 1.94" Width - 1-1/4" ID**

A	B	C			
2.00	1.94	1.252/1.256			
Durometer	Neoprene Part #	Nitrile Part #	Urethane Part #		
20	RR-2020-20-R	RR-2020-20W-R	-		
35	RR-2020-35-R	RR-2020-35W-R	RR-2020-35UR-R		
60	RR-2020-60-R	RR-2020-60W-R	RR-2020-60UR-R		
80	RR-2020-80-R	RR-2020-80W-R	RR-2020-80UR-R		
95	-	-	RR-2020-95UR-R		

**2.50" Dia. x .92" Width - 1-1/8" ID**

A	B	C			
2.50	.92	1.125/1.128			
Durometer	Neoprene Part #	Nitrile Part #	Urethane Part #		
20	RR-9502-20-RP	RR-9502-20W-RP	-		
35	RR-9502-35-RP	RR-9502-35W-RP	RR-9502-35UR-RP		
60	RR-9502-60-RP	RR-9502-60W-RP	RR-9502-60UR-RP		
80	RR-9502-80-RP	RR-9502-80W-RP	RR-9502-80UR-RP		
95	-	-	RR-9502-95UR-RP		

**2.50" Dia. x .92" Width - 1-1/4" ID**

A	B	C			
2.50	.92	1.252/1.256			
Durometer	Neoprene Part #	Nitrile Part #	Urethane Part #		
20	RR-9502-20-R	RR-9502-20W-R	-		
35	RR-9502-35-R	RR-9502-35W-R	RR-9502-35UR-R		
60	RR-9502-60-R	RR-9502-60W-R	RR-9502-60UR-R		
80	RR-9502-80-R	RR-9502-80W-R	RR-9502-80UR-R		
95	-	-	RR-9502-95UR-R		

**2.50" Dia. x 1.94" Width - 1-1/8" ID**

A	B	C			
2.50	1.94	1.125/1.128			
Durometer	Neoprene Part #	Nitrile Part #	Urethane Part #		
20	RR-502-20-RP	RR-502-20W-RP	-		
35	RR-502-35-RP	RR-502-35W-RP	RR-502-35UR-RP		
60	RR-502-60-RP	RR-502-60W-RP	RR-502-60UR-RP		
80	RR-502-80-RP	RR-502-80W-RP	RR-502-80UR-RP		
95	-	-	RR-502-95UR-RP		



**2.50" Dia. x 1.94" Width - 1-1/4" ID**

A	B	C		
2.50	1.94	1.252/1.256		
Durometer	Neoprene Part #	Nitrile Part #	Urethane Part #	
20	RR-502-20-R	RR-502-20W-R	-	
35	RR-502-35-R	RR-502-35W-R	RR-502-35UR-R	
60	RR-502-60-R	RR-502-60W-R	RR-502-60UR-R	
80	RR-502-80-R	RR-502-80W-R	RR-502-80UR-R	
95	-	-	RR-502-95UR-R	

**4.00" Dia. x .92" Width - 1-1/8" ID**

A	B	C		
4.00	.92	1.125/1.128		
Durometer	Neoprene Part #	Nitrile Part #	Urethane Part #	
20	RR-9754-20-RP	RR-9754-20W-RP	-	
35	RR-9754-35-RP	RR-9754-35W-RP	RR-9754-35UR-RP	
60	RR-9754-60-RP	RR-9754-60W-RP	RR-9754-60UR-RP	
80	RR-9754-80-RP	RR-9754-80W-RP	RR-9754-80UR-RP	
95	-	-	RR-9754-95UR-RP	

**4.00" Dia. x .92" Width - 1-1/4" ID**

A	B	C		
4.00	.92	1.252/1.256		
Durometer	Neoprene Part #	Nitrile Part #	Urethane Part #	
20	RR-9754-20-R	RR-9754-20W-R	-	
35	RR-9754-35-R	RR-9754-35W-R	RR-9754-35UR-R	
60	RR-9754-60-R	RR-9754-60W-R	RR-9754-60UR-R	
80	RR-9754-80-R	RR-9754-80W-R	RR-9754-80UR-R	
95	-	-	RR-9754-95UR-R	

**4.00" Dia. x 1.94" Width - 1-1/8" ID**

A	B	C		
4.00	1.94	1.125/1.128		
Durometer	Neoprene Part #	Nitrile Part #	Urethane Part #	
20	RR-754-20-RP	RR-754-20W-RP	-	
35	RR-754-35-RP	RR-754-35W-RP	RR-754-35UR-RP	
60	RR-754-60-RP	RR-754-60W-RP	RR-754-60UR-RP	
80	RR-754-80-RP	RR-754-80W-RP	RR-754-80UR-RP	
95	-	-	RR-754-95UR-RP	

**4.00" Dia. x 1.94" Width - 1-1/4" ID**

A	B	C		
4.00	1.94	1.252/1.256		
Durometer	Neoprene Part #	Nitrile Part #	Urethane Part #	
20	RR-754-20-R	RR-754-20W-R	-	
35	RR-754-35-R	RR-754-35W-R	RR-754-35UR-R	
60	RR-754-60-R	RR-754-60W-R	RR-754-60UR-R	
80	RR-754-80-R	RR-754-80W-R	RR-754-80UR-R	
95	-	-	RR-754-95UR-R	



**5.00" Dia. x 1.94" Width - 1-1/8" ID**

A	B	C
5.00	1.94	1.125/1.128
Urethane		
Durometer	Part #	
35	RR-5020-35UR-RP	
60	RR-5020-60UR-RP	
80	RR-5020-80UR-RP	

**5.00" Dia. x 1.94" Width - 1-1/4" ID**

A	B	C
5.00	1.94	1.252/1.256
Urethane		
Durometer	Part #	
35	RR-5020-35UR-R	
60	RR-5020-60UR-R	
80	RR-5020-80UR-R	

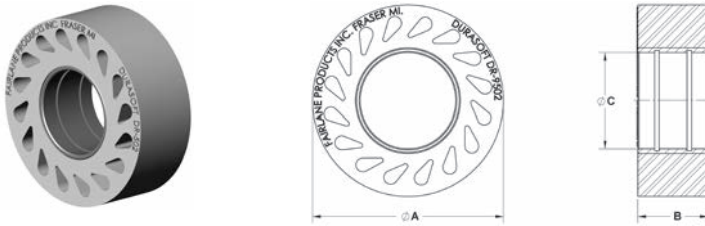
**6.00" Dia. x 1.94" Width - 1-1/8" ID**

A	B	C
6.00	1.94	1.125/1.128
Urethane		
Durometer	Part #	
35	RR-6020-35UR-RP	
60	RR-6020-60UR-RP	
80	RR-6020-80UR-RP	

**6.00" Dia. x 1.94" Width - 1-1/4" ID**

A	B	C
6.00	1.94	1.252/1.256
Urethane		
Durometer	Part #	
35	RR-6020-35UR-R	
60	RR-6020-60UR-R	
80	RR-6020-80UR-R	

Distributed by  
**AJACS**  
1-800-968-6868



DuraSoft rollers have a smooth surface and are permanently bonded to a steel insert. The steel insert provides rigidity and allows the user to customize the mounting configuration based on the application. The "teardrop" holes allow the roller to flex for firm yet non-damaging contact. Rollers are available in neoprene, nitrile and urethane materials with hardness ranging from 20 to 95 durometer. See page 6 for material and durometer specifications. Line drawings shown are not proportional for all parts. View and download part CAD models at [www.fairlaneproducts.com](http://www.fairlaneproducts.com).

<b>2.50" Dia. x .92" Width - 1-1/8" ID</b>	
A	B C
2.50	.92 1.125/1.128
Urethane	
Durometer	Part #
35	DR-9502-35UR-RP
60	DR-9502-60UR-RP
80	DR-9502-80UR-RP
95	DR-9502-95UR-RP

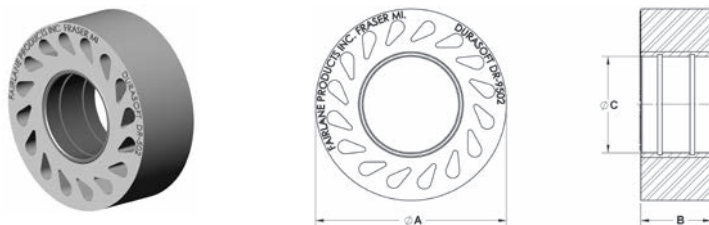
<b>2.50" Dia. x .92" Width - 1-1/4" ID</b>	
A	B C
2.50	.92 1.252/1.256
Urethane	
Durometer	Part #
35	DR-9502-35UR-R
60	DR-9502-60UR-R
80	DR-9502-80UR-R
95	DR-9502-95UR-R

<b>2.50" Dia. x 1.94" Width - 1-1/8" ID</b>	
A	B C
2.50	1.94 1.125/1.128
Urethane	
Durometer	Part #
35	DR-502-35UR-RP
60	DR-502-60UR-RP
80	DR-502-80UR-RP
95	DR-502-95UR-RP

<b>2.50" Dia. x 1.94" Width - 1-1/4" ID</b>	
A	B C
2.50	1.94 1.252/1.256
Urethane	
Durometer	Part #
35	DR-502-35UR-R
60	DR-502-60UR-R
80	DR-502-80UR-R
95	DR-502-95UR-R

<b>4.00" Dia. x .92" Width - 1-1/8" ID</b>			
A	B	C	
4.00	.92	1.125/1.128	
Durometer	Neoprene Part #	Nitrile Part #	Urethane Part #
20	DR-9754-20-RP	DR-9754-20W-RP	-
35	DR-9754-35-RP	DR-9754-35W-RP	DR-9754-35UR-RP
60	-	-	DR-9754-60UR-RP
80	-	-	DR-9754-80UR-RP
95	-	-	DR-9754-95UR-RP





**4.00" Dia. x .92" Width - 1-1/4" ID**

A	B	C	
4.00	.92	1.252/1.256	
Durometer	Neoprene Part #	Nitrile Part #	Urethane Part #
20	DR-9754-20-R	DR-9754-20W-R	-
35	DR-9754-35-R	DR-9754-35W-R	DR-9754-35UR-R
60	-	-	DR-9754-60UR-R
80	-	-	DR-9754-80UR-R
95	-	-	DR-9754-95UR-R

**4.00" Dia. x 1.94" Width - 1-1/8" ID**

A	B	C	
4.00	1.94	1.125/1.128	
Durometer	Neoprene Part #	Nitrile Part #	Urethane Part #
20	DR-754-20-RP	DR-754-20W-RP	-
35	DR-754-35-RP	DR-754-35W-RP	DR-754-35UR-RP
60	-	-	DR-754-60UR-RP
80	-	-	DR-754-80UR-RP
95	-	-	DR-754-95UR-RP

**4.00" Dia. x 1.94" Width - 1-1/4" ID**

A	B	C	
4.00	1.94	1.252/1.256	
Durometer	Neoprene Part #	Nitrile Part #	Urethane Part #
20	DR-754-20-R	DR-754-20W-R	-
35	DR-754-35-R	DR-754-35W-R	DR-754-35UR-R
60	-	-	DR-754-60UR-R
80	-	-	DR-754-80UR-R
95	-	-	DR-754-95UR-R



Finned rollers have grooves on the surface and are permanently bonded to a steel insert. The steel insert provides rigidity and allows the user to customize the mounting configuration based on the application. The grooves create less surface contact on the work piece and allow dirt, debris and liquids to pass. Rollers are available in neoprene, nitrile and urethane materials with hardness ranging from 20 to 60 durometer. See page 6 for material and durometer specifications. Line drawings shown are not proportional for all parts. View and download part CAD models at [www.fairlaneproducts.com](http://www.fairlaneproducts.com).

<b>2.00" Dia. x .92" Width - 1-1/8" ID</b>			
A	B	C	# Of Fins
2.00	.92	1.125/1.128	3
Durometer	Neoprene Part #	Nitrile Part #	Urethane Part #
20	RR-9250-2-20-RP	RR-9250-2-20W-RP	-
35	RR-9250-2-35-RP	RR-9250-2-35W-RP	RR-9250-2-35UR-RP
60	RR-9250-2-60-RP	RR-9250-2-60W-RP	RR-9250-2-60UR-RP

<b>2.00" Dia. x .92" Width - 1-1/4" ID</b>			
A	B	C	# Of Fins
2.00	.92	1.252/1.256	3
Durometer	Neoprene Part #	Nitrile Part #	Urethane Part #
20	RR-9250-2-20-R	RR-9250-2-20W-R	-
35	RR-9250-2-35-R	RR-9250-2-35W-R	RR-9250-2-35UR-R
60	RR-9250-2-60-R	RR-9250-2-60W-R	RR-9250-2-60UR-R

<b>2.00" Dia. x 1.94" Width - 1-1/8" ID</b>			
A	B	C	# Of Fins
2.00	1.94	1.125/1.128	6
Durometer	Neoprene Part #	Nitrile Part #	Urethane Part #
20	RR-250-2-20-RP	RR-250-2-20W-RP	-
35	RR-250-2-35-RP	RR-250-2-35W-RP	RR-250-2-35UR-RP
60	RR-250-2-60-RP	RR-250-2-60W-RP	RR-250-2-60UR-RP

<b>2.00" Dia. x 1.94" Width - 1-1/4" ID</b>			
A	B	C	# Of Fins
2.00	1.94	1.252/1.256	6
Durometer	Neoprene Part #	Nitrile Part #	Urethane Part #
20	RR-250-2-20-R	RR-250-2-20W-R	-
35	RR-250-2-35-R	RR-250-2-35W-R	RR-250-2-35UR-R
60	RR-250-2-60-R	RR-250-2-60W-R	RR-250-2-60UR-R

<b>2.50" Dia. x .92" Width - 1-1/8" ID</b>			
A	B	C	# Of Fins
2.50	.92	1.125/1.128	3
Durometer	Neoprene Part #	Nitrile Part #	Urethane Part #
20	RR-9250-20-RP	RR-9250-20W-RP	-
35	RR-9250-35-RP	RR-9250-35W-RP	RR-9250-35UR-RP
60	RR-9250-60-RP	RR-9250-60W-RP	RR-9250-60UR-RP



**2.50" Dia. x .92" Width - 1-1/4" ID**

A	B	C	# Of Fins
2.50	.92	1.252/1.256	3
Durometer	Neoprene Part #	Nitrile Part #	Urethane Part #
20	RR-9250-20-R	RR-9250-20W-R	-
35	RR-9250-35-R	RR-9250-35W-R	RR-9250-35UR-R
60	RR-9250-60-R	RR-9250-60W-R	RR-9250-60UR-R

**2.50" Dia. x 1.94" Width - 1-1/8" ID**

A	B	C	# Of Fins
2.50	1.94	1.125/1.128	6
Durometer	Neoprene Part #	Nitrile Part #	Urethane Part #
20	RR-250-20-RP	RR-250-20W-RP	-
35	RR-250-35-RP	RR-250-35W-RP	RR-250-35UR-RP
60	RR-250-60-RP	RR-250-60W-RP	RR-250-60UR-RP

**2.50" Dia. x 1.94" Width - 1-1/4" ID**

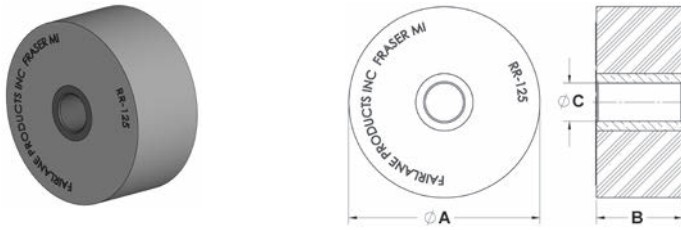
A	B	C	# Of Fins
2.50	1.94	1.252/1.256	6
Durometer	Neoprene Part #	Nitrile Part #	Urethane Part #
20	RR-250-20-R	RR-250-20W-R	-
35	RR-250-35-R	RR-250-35W-R	RR-250-35UR-R
60	RR-250-60-R	RR-250-60W-R	RR-250-60UR-R

**4.00" Dia. x 1.94" Width - 1-1/8" ID**

A	B	C	# Of Fins
4.00	1.94	1.125/1.128	8
Durometer	Neoprene Part #	Nitrile Part #	Urethane Part #
35	RR-667-35-RP	RR-667-35W-RP	RR-667-35UR-RP
60	RR-667-60-RP	RR-667-60W-RP	RR-667-60UR-RP

**4.00" Dia. x 1.94" Width - 1-1/4" ID**

A	B	C	# Of Fins
4.00	1.94	1.252/1.256	8
Durometer	Neoprene Part #	Nitrile Part #	Urethane Part #
35	RR-667-35-R	RR-667-35W-R	RR-667-35UR-R
60	RR-667-60-R	RR-667-60W-R	RR-667-60UR-R



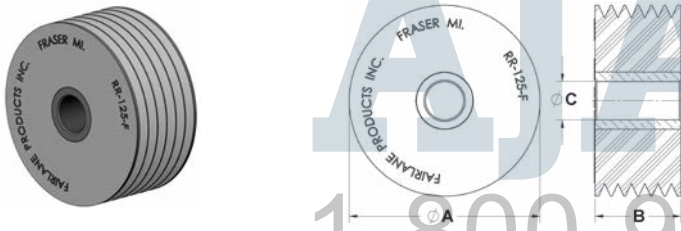
Solid rollers have a smooth surface and are permanently bonded to a bronze insert. The SAE 660 bronze insert provides rigidity as well as self lubrication. Rollers are available in neoprene, nitrile and urethane materials with hardness ranging from 60 to 80 durometer. See page 6 for material and durometer specifications.

**2.50" Dia. x 1.125" Width - 1/2" ID**

A	B	C		
2.50	1.125	.501/.504		
Durometer	Neoprene Part #	Nitrile Part #	Urethane Part #	
60	RR-125-60	RR-125-60W	RR-125-60UR	
80	-	-	RR-125-80UR	

Distributed by  
**ATAACS**

**BRONZE BUSHING - Finned Rollers**



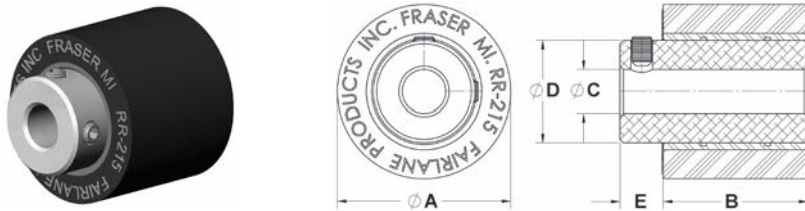
Finned rollers have grooves on the surface and are permanently bonded to a bronze bushing. The SAE 660 bronze insert provides rigidity as well as self lubrication. The grooves create less surface contact on the work piece and allow dirt, debris and liquids to pass. Rollers are available in neoprene and nitrile materials with hardness of 60 durometer. See page 6 for material and durometer specifications.

**1.50" Dia. x 1.125" Width - 1/2" ID**

A	B	C	# Of Fins		
1.50	1.125	.501/.504	7		
Durometer	Neoprene Part #	Nitrile Part #			
60	RR-125-2F-60	RR-125-2F-60W			

**2.50" Dia. x 1.125" Width - 1/2" ID**

A	B	C	# Of Fins		
2.50	1.125	.501/.504	7		
Durometer	Neoprene Part #	Nitrile Part #			
60	RR-125-F-60	RR-125-F-60W			



Solid rollers have a smooth surface and are permanently bonded to a steel insert. Designed to be mounted on a shaft. A hub extends past the roller and is supplied with two set screws (90 degrees apart) to fasten onto the shaft. Rollers are available in neoprene, nitrile and urethane materials with hardness ranging from 20 to 95 durometer. See page 6 for material and durometer specifications. Line drawings shown are not proportional for all parts. View and download part CAD models at [www.fairlaneproducts.com](http://www.fairlaneproducts.com).

### 1.50" Dia. x 1.25" Width - 3/8" ID

A	B	C	D	E
1.50	1.25	.376/.380	.88	.38
Durometer	Neoprene Part #	Nitrile Part #	Urethane Part #	
20	RR-215-20-EX375	RR-215-20W-EX375	-	
35	RR-215-35-EX375	RR-215-35W-EX375	RR-215-35UR-EX375	
60	RR-215-60-EX375	RR-215-60W-EX375	RR-215-60UR-EX375	
80	RR-215-80-EX375	RR-215-80W-EX375	RR-215-80UR-EX375	
95	-	-	RR-215-95UR-EX375	

### 1.50" Dia. x 1.25" Width - 1/2" ID

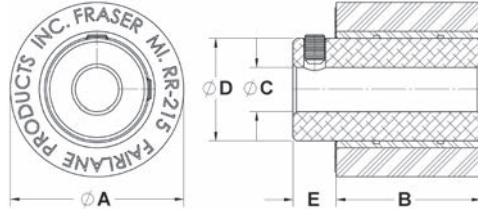
A	B	C	D	E
1.50	1.25	.501/.505	.88	.38
Durometer	Neoprene Part #	Nitrile Part #	Urethane Part #	
20	RR-215-20-EX500	RR-215-20W-EX500	-	
35	RR-215-35-EX500	RR-215-35W-EX500	RR-215-35UR-EX500	
60	RR-215-60-EX500	RR-215-60W-EX500	RR-215-60UR-EX500	
80	RR-215-80-EX500	RR-215-80W-EX500	RR-215-80UR-EX500	
95	-	-	RR-215-95UR-EX500	

### 2.00" Dia. x .92" Width - 1/2" ID

A	B	C	D	E
2.00	.92	.501/.505	1.25	.50
Durometer	Neoprene Part #	Nitrile Part #	Urethane Part #	
20	RR-92020-20-EX500	RR-92020-20W-EX500	-	
35	RR-92020-35-EX500	RR-92020-35W-EX500	RR-92020-35UR-EX500	
60	RR-92020-60-EX500	RR-92020-60W-EX500	RR-92020-60UR-EX500	
80	RR-92020-80-EX500	RR-92020-80W-EX500	RR-92020-80UR-EX500	
95	-	-	RR-92020-95UR-EX500	

### 2.00" Dia. x .92" Width - 5/8" ID

A	B	C	D	E
2.00	.92	.626/.631	1.25	.50
Durometer	Neoprene Part #	Nitrile Part #	Urethane Part #	
20	RR-92020-20-EX625	RR-92020-20W-EX625	-	
35	RR-92020-35-EX625	RR-92020-35W-EX625	RR-92020-35UR-EX625	
60	RR-92020-60-EX625	RR-92020-60W-EX625	RR-92020-60UR-EX625	
80	RR-92020-80-EX625	RR-92020-80W-EX625	RR-92020-80UR-EX625	
95	-	-	RR-92020-95UR-EX625	



**2.00" Dia. x .92" Width - 3/4" ID**

A	B	C	D	E
2.00	.92	.751/.756	1.25	.50
Durometer	Neoprene Part #	Nitrile Part #	Urethane Part #	
20	RR-92020-20-EX750	RR-92020-20W-EX750	-	
35	RR-92020-35-EX750	RR-92020-35W-EX750	RR-92020-35UR-EX750	
60	RR-92020-60-EX750	RR-92020-60W-EX750	RR-92020-60UR-EX750	
80	RR-92020-80-EX750	RR-92020-80W-EX750	RR-92020-80UR-EX750	
95	-	-	RR-92020-95UR-EX750	

**2.00" Dia. x .92" Width - 1.00" ID**

A	B	C	D	E
2.00	.92	1.001/1.006	1.37	.50
Durometer	Neoprene Part #	Nitrile Part #	Urethane Part #	
20	RR-92020-20-EX10	RR-92020-20W-EX10	-	
35	RR-92020-35-EX10	RR-92020-35W-EX10	RR-92020-35UR-EX10	
60	RR-92020-60-EX10	RR-92020-60W-EX10	RR-92020-60UR-EX10	
80	RR-92020-80-EX10	RR-92020-80W-EX10	RR-92020-80UR-EX10	
95	-	-	RR-92020-95UR-EX10	

**2.00" Dia. x 1.94" Width - 1/2" ID**

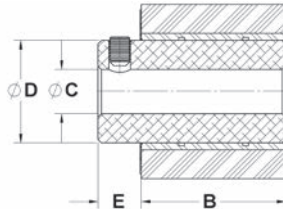
A	B	C	D	E
2.00	1.94	.501/.505	1.25	.50
Durometer	Neoprene Part #	Nitrile Part #	Urethane Part #	
20	RR-2020-20-EX500	RR-2020-20W-EX500	-	
35	RR-2020-35-EX500	RR-2020-35W-EX500	RR-2020-35UR-EX500	
60	RR-2020-60-EX500	RR-2020-60W-EX500	RR-2020-60UR-EX500	
80	RR-2020-80-EX500	RR-2020-80W-EX500	RR-2020-80UR-EX500	
95	-	-	RR-2020-95UR-EX500	

**2.00" Dia. x 1.94" Width - 5/8" ID**

A	B	C	D	E
2.00	1.94	.626/.631	1.25	.50
Durometer	Neoprene Part #	Nitrile Part #	Urethane Part #	
20	RR-2020-20-EX625	RR-2020-20W-EX625	-	
35	RR-2020-35-EX625	RR-2020-35W-EX625	RR-2020-35UR-EX625	
60	RR-2020-60-EX625	RR-2020-60W-EX625	RR-2020-60UR-EX625	
80	RR-2020-80-EX625	RR-2020-80W-EX625	RR-2020-80UR-EX625	
95	-	-	RR-2020-95UR-EX625	

**2.00" Dia. x 1.94" Width - 3/4" ID**

A	B	C	D	E
2.00	1.94	.751/.756	1.25	.50
Durometer	Neoprene Part #	Nitrile Part #	Urethane Part #	
20	RR-2020-20-EX750	RR-2020-20W-EX750	-	
35	RR-2020-35-EX750	RR-2020-35W-EX750	RR-2020-35UR-EX750	
60	RR-2020-60-EX750	RR-2020-60W-EX750	RR-2020-60UR-EX750	
80	RR-2020-80-EX750	RR-2020-80W-EX750	RR-2020-80UR-EX750	
95	-	-	RR-2020-95UR-EX750	



### 2.00" Dia. x 1.94" Width - 1.00" ID

A	B	C	D	E
2.00	1.94	1.001/1.006	1.37	.50
Durometer	Neoprene Part #	Nitrile Part #	Urethane Part #	
20	RR-2020-20-EX10	RR-2020-20W-EX10	-	
35	RR-2020-35-EX10	RR-2020-35W-EX10	RR-2020-35UR-EX10	
60	RR-2020-60-EX10	RR-2020-60W-EX10	RR-2020-60UR-EX10	
80	RR-2020-80-EX10	RR-2020-80W-EX10	RR-2020-80UR-EX10	
95	-	-	RR-2020-95UR-EX10	

### 2.50" Dia. x .92" Width - 1/2" ID

A	B	C	D	E
2.50	.92	.501/.505	1.25	.50
Durometer	Neoprene Part #	Nitrile Part #	Urethane Part #	
20	RR-9502-20-EX500	RR-9502-20W-EX500	-	
35	RR-9502-35-EX500	RR-9502-35W-EX500	RR-9502-35UR-EX500	
60	RR-9502-60-EX500	RR-9502-60W-EX500	RR-9502-60UR-EX500	
80	RR-9502-80-EX500	RR-9502-80W-EX500	RR-9502-80UR-EX500	
95	-	-	RR-9502-95UR-EX500	

### 2.50" Dia. x .92" Width - 5/8" ID

A	B	C	D	E
2.50	.92	.626/.631	1.25	.50
Durometer	Neoprene Part #	Nitrile Part #	Urethane Part #	
20	RR-9502-20-EX625	RR-9502-20W-EX625	-	
35	RR-9502-35-EX625	RR-9502-35W-EX625	RR-9502-35UR-EX625	
60	RR-9502-60-EX625	RR-9502-60W-EX625	RR-9502-60UR-EX625	
80	RR-9502-80-EX625	RR-9502-80W-EX625	RR-9502-80UR-EX625	
95	-	-	RR-9502-95UR-EX625	

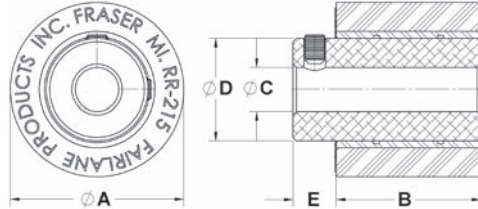
### 2.50" Dia. x .92" Width - 3/4" ID

A	B	C	D	E
2.50	.92	.751/.756	1.25	.50
Durometer	Neoprene Part #	Nitrile Part #	Urethane Part #	
20	RR-9502-20-EX750	RR-9502-20W-EX750	-	
35	RR-9502-35-EX750	RR-9502-35W-EX750	RR-9502-35UR-EX750	
60	RR-9502-60-EX750	RR-9502-60W-EX750	RR-9502-60UR-EX750	
80	RR-9502-80-EX750	RR-9502-80W-EX750	RR-9502-80UR-EX750	
95	-	-	RR-9502-95UR-EX750	

### 2.50" Dia. x .92" Width - 1.00" ID

A	B	C	D	E
2.50	.92	1.001/1.006	1.37	.50
Durometer	Neoprene Part #	Nitrile Part #	Urethane Part #	
20	RR-9502-20-EX10	RR-9502-20W-EX10	-	
35	RR-9502-35-EX10	RR-9502-35W-EX10	RR-9502-35UR-EX10	
60	RR-9502-60-EX10	RR-9502-60W-EX10	RR-9502-60UR-EX10	
80	RR-9502-80-EX10	RR-9502-80W-EX10	RR-9502-80UR-EX10	
95	-	-	RR-9502-95UR-EX10	





**2.50" Dia. x 1.94" Width - 1/2" ID**

A	B	C	D	E
2.50	1.94	.501/.505	1.25	.50
Durometer	Neoprene Part #	Nitrile Part #	Urethane Part #	
20	RR-502-20-EX500	RR-502-20W-EX500	-	
35	RR-502-35-EX500	RR-502-35W-EX500	RR-502-35UR-EX500	
60	RR-502-60-EX500	RR-502-60W-EX500	RR-502-60UR-EX500	
80	RR-502-80-EX500	RR-502-80W-EX500	RR-502-80UR-EX500	
95	-	-	RR-502-95UR-EX500	

**2.50" Dia. x 1.94" Width - 5/8" ID**

A	B	C	D	E
2.50	1.94	.626/.631	1.25	.50
Durometer	Neoprene Part #	Nitrile Part #	Urethane Part #	
20	RR-502-20-EX625	RR-502-20W-EX625	-	
35	RR-502-35-EX625	RR-502-35W-EX625	RR-502-35UR-EX625	
60	RR-502-60-EX625	RR-502-60W-EX625	RR-502-60UR-EX625	
80	RR-502-80-EX625	RR-502-80W-EX625	RR-502-80UR-EX625	
95	-	-	RR-502-95UR-EX625	

**2.50" Dia. x 1.94" Width - 3/4" ID**

A	B	C	D	E
2.50	1.94	.751/.756	1.25	.50
Durometer	Neoprene Part #	Nitrile Part #	Urethane Part #	
20	RR-502-20-EX750	RR-502-20W-EX750	-	
35	RR-502-35-EX750	RR-502-35W-EX750	RR-502-35UR-EX750	
60	RR-502-60-EX750	RR-502-60W-EX750	RR-502-60UR-EX750	
80	RR-502-80-EX750	RR-502-80W-EX750	RR-502-80UR-EX750	
95	-	-	RR-502-95UR-EX750	

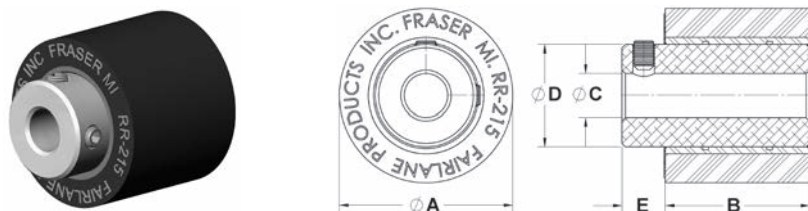
**2.50" Dia. x 1.94" Width - 1.00" ID**

A	B	C	D	E
2.50	1.94	1.001/1.006	1.37	.50
Durometer	Neoprene Part #	Nitrile Part #	Urethane Part #	
20	RR-502-20-EX10	RR-502-20W-EX10	-	
35	RR-502-35-EX10	RR-502-35W-EX10	RR-502-35UR-EX10	
60	RR-502-60-EX10	RR-502-60W-EX10	RR-502-60UR-EX10	
80	RR-502-80-EX10	RR-502-80W-EX10	RR-502-80UR-EX10	
95	-	-	RR-502-95UR-EX10	

**2.50" Dia. x 1.94" Width - 1-1/4" ID**

A	B	C	D	E
2.50	1.94	1.251/1.256	1.63	.50
Durometer	Neoprene Part #	Urethane Part #		
60	RR-502-60-EX12	RR-502-60UR-EX12		
80	-	RR-502-80UR-EX12		
95	-	RR-502-95UR-EX12		





### 4.00" Dia. x .92" Width - 1/2" ID

A	B	C	D	E
4.00	.92	.501/.505	1.25	.50
Durometer	Neoprene Part #	Nitrile Part #	Urethane Part #	
20	RR-9754-20-EX500	RR-9754-20W-EX500	-	
35	RR-9754-35-EX500	RR-9754-35W-EX500	RR-9754-35UR-EX500	
60	RR-9754-60-EX500	RR-9754-60W-EX500	RR-9754-60UR-EX500	
80	RR-9754-80-EX500	RR-9754-80W-EX500	RR-9754-80UR-EX500	
95	-	-	RR-9754-95UR-EX500	

### 4.00" Dia. x .92" Width - 5/8" ID

A	B	C	D	E
4.00	.92	.626/.631	1.25	.50
Durometer	Neoprene Part #	Nitrile Part #	Urethane Part #	
20	RR-9754-20-EX625	RR-9754-20W-EX625	-	
35	RR-9754-35-EX625	RR-9754-35W-EX625	RR-9754-35UR-EX625	
60	RR-9754-60-EX625	RR-9754-60W-EX625	RR-9754-60UR-EX625	
80	RR-9754-80-EX625	RR-9754-80W-EX625	RR-9754-80UR-EX625	
95	-	-	RR-9754-95UR-EX625	

### 4.00" Dia. x .92" Width - 3/4" ID

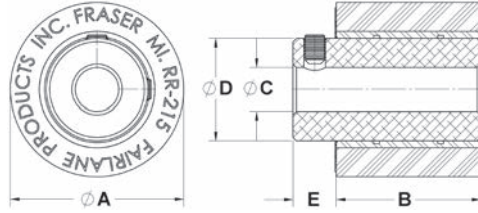
A	B	C	D	E
4.00	.92	.751/.756	1.25	.50
Durometer	Neoprene Part #	Nitrile Part #	Urethane Part #	
20	RR-9754-20-EX750	RR-9754-20W-EX750	-	
35	RR-9754-35-EX750	RR-9754-35W-EX750	RR-9754-35UR-EX750	
60	RR-9754-60-EX750	RR-9754-60W-EX750	RR-9754-60UR-EX750	
80	RR-9754-80-EX750	RR-9754-80W-EX750	RR-9754-80UR-EX750	
95	-	-	RR-9754-95UR-EX750	

### 4.00" Dia. x .92" Width - 1.00" ID

A	B	C	D	E
4.00	.92	1.001/1.006	1.37	.50
Durometer	Neoprene Part #	Nitrile Part #	Urethane Part #	
20	RR-9754-20-EX10	RR-9754-20W-EX10	-	
35	RR-9754-35-EX10	RR-9754-35W-EX10	RR-9754-35UR-EX10	
60	RR-9754-60-EX10	RR-9754-60W-EX10	RR-9754-60UR-EX10	
80	RR-9754-80-EX10	RR-9754-80W-EX10	RR-9754-80UR-EX10	
95	-	-	RR-9754-95UR-EX10	

### 4.00" Dia. x 1.94" Width - 1/2" ID

A	B	C	D	E
4.00	1.94	.501/.505	1.25	.50
Durometer	Neoprene Part #	Nitrile Part #	Urethane Part #	
20	RR-754-20-EX500	RR-754-20W-EX500	-	
35	RR-754-35-EX500	RR-754-35W-EX500	RR-754-35UR-EX500	
60	RR-754-60-EX500	RR-754-60W-EX500	RR-754-60UR-EX500	
80	RR-754-80-EX500	RR-754-80W-EX500	RR-754-80UR-EX500	
95	-	-	RR-754-95UR-EX500	



**4.00" Dia. x 1.94" Width - 5/8" ID**

A	B	C	D	E
4.00	1.94	.626/.631	1.25	.50
Durometer	Neoprene Part #	Nitrile Part #	Urethane Part #	
20	RR-754-20-EX625	RR-754-20W-EX625	-	
35	RR-754-35-EX625	RR-754-35W-EX625	RR-754-35UR-EX625	
60	RR-754-60-EX625	RR-754-60W-EX625	RR-754-60UR-EX625	
80	RR-754-80-EX625	RR-754-80W-EX625	RR-754-80UR-EX625	
95	-	-	RR-754-95UR-EX625	

**4.00" Dia. x 1.94" Width - 3/4" ID**

A	B	C	D	E
4.00	1.94	.751/.756	1.25	.50
Durometer	Neoprene Part #	Nitrile Part #	Urethane Part #	
20	RR-754-20-EX750	RR-754-20W-EX750	-	
35	RR-754-35-EX750	RR-754-35W-EX750	RR-754-35UR-EX750	
60	RR-754-60-EX750	RR-754-60W-EX750	RR-754-60UR-EX750	
80	RR-754-80-EX750	RR-754-80W-EX750	RR-754-80UR-EX750	
95	-	-	RR-754-95UR-EX750	

**4.00" Dia. x 1.94" Width - 1.00" ID**

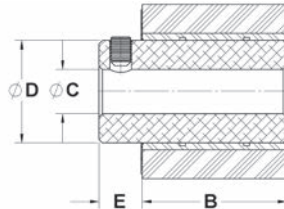
A	B	C	D	E
4.00	1.94	1.001/1.006	1.37	.50
Durometer	Neoprene Part #	Nitrile Part #	Urethane Part #	
20	RR-754-20-EX10	RR-754-20W-EX10	-	
35	RR-754-35-EX10	RR-754-35W-EX10	RR-754-35UR-EX10	
60	RR-754-60-EX10	RR-754-60W-EX10	RR-754-60UR-EX10	
80	RR-754-80-EX10	RR-754-80W-EX10	RR-754-80UR-EX10	
95	-	-	RR-754-95UR-EX10	

**4.00" Dia. x 1.94" Width - 1-1/4" ID**

A	B	C	D	E
4.00	1.94	1.251/1.256	1.63	.50
Durometer	Neoprene Part #	Nitrile Part #	Urethane Part #	
35	RR-754-35-EX12	-	-	
60	RR-754-60-EX12	RR-754-60W-EX12	RR-754-60UR-EX12	
80	-	-	RR-754-80UR-EX12	
95	-	-	RR-754-95UR-EX12	

**5.00" Dia. x 1.94" Width - 1/2" ID**

A	B	C	D	E
5.00	1.94	.501/.505	1.25	.50
Durometer	Urethane Part #			
35	RR-5020-35UR-EX500			
60	RR-5020-60UR-EX500			
80	RR-5020-80UR-EX500			

**5.00" Dia. x 1.94" Width - 5/8" ID**

A	B	C	D	E
5.00	1.94	.626/.631	1.25	.50

**Urethane**

Durometer	Part #
35	RR-5020-35UR-EX625
60	RR-5020-60UR-EX625
80	RR-5020-80UR-EX625

**5.00" Dia. x 1.94" Width - 3/4" ID**

A	B	C	D	E
5.00	1.94	.751/.756	1.25	.50

**Urethane**

Durometer	Part #
35	RR-5020-35UR-EX750
60	RR-5020-60UR-EX750
80	RR-5020-80UR-EX750

**5.00" Dia. x 1.94" Width - 1.00" ID**

A	B	C	D	E
5.00	1.94	1.001/1.006	1.37	.50

**Urethane**

Durometer	Part #
35	RR-5020-35UR-EX10
60	RR-5020-60UR-EX10
80	RR-5020-80UR-EX10

**5.00" Dia. x 1.94" Width - 1-1/4" ID**

A	B	C	D	E
5.00	1.94	1.251/1.256	1.63	.50

**Urethane**

Durometer	Part #
35	RR-5020-35UR-EX12
60	RR-5020-60UR-EX12
80	RR-5020-80UR-EX12

**6.00" Dia. x 1.94" Width - 1/2" ID**

A	B	C	D	E
6.00	1.94	.501/.505	1.25	.50

**Urethane**

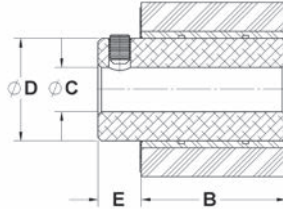
Durometer	Part #
35	RR-6020-35UR-EX500
60	RR-6020-60UR-EX500
80	RR-6020-80UR-EX500

**6.00" Dia. x 1.94" Width - 5/8" ID**

A	B	C	D	E
6.00	1.94	.626/.631	1.25	.50

**Urethane**

Durometer	Part #
35	RR-6020-35UR-EX625
60	RR-6020-60UR-EX625
80	RR-6020-80UR-EX625



**6.00" Dia. x 1.94" Width - 3/4" ID**

A	B	C	D	E
6.00	1.94	.751/.756	1.25	.50

Urethane	
Durometer	Part #
35	RR-6020-35UR-EX750
60	RR-6020-60UR-EX750
80	RR-6020-80UR-EX750

**6.00" Dia. x 1.94" Width - 1.00" ID**

A	B	C	D	E
6.00	1.94	1.001/1.006	1.37	.50

Urethane	
Durometer	Part #
35	RR-6020-35UR-EX10
60	RR-6020-60UR-EX10
80	RR-6020-80UR-EX10

**6.00" Dia. x 1.94" Width - 1-1/4" ID**

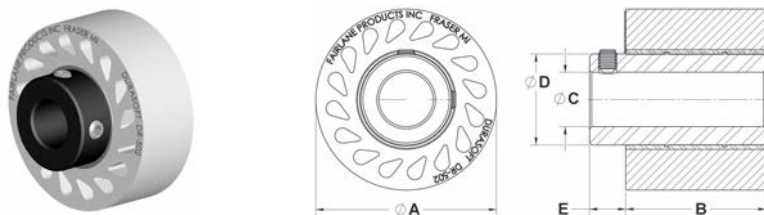
A	B	C	D	E
6.00	1.94	1.251/1.256	1.63	.50

Urethane	
Durometer	Part #
35	RR-6020-35UR-EX12
60	RR-6020-60UR-EX12
80	RR-6020-80UR-EX12

Distributed by

**AJACS**

1-800-968-6868



DuraSoft rollers have a smooth surface and are permanently bonded to a steel insert. Designed to be mounted on a shaft. A hub extends past the roller and is supplied with two set screws (90 degrees apart) to fasten onto the shaft. The "teardrop" holes allow the roller to flex for firm yet non-damaging contact. Rollers are available in neoprene, nitrile and urethane materials with hardness ranging from 20 to 95 durometer. See page 6 for material and durometer specifications. Line drawings shown are not proportional for all parts. View and download part CAD models at [www.fairlaneproducts.com](http://www.fairlaneproducts.com).

### 2.50" Dia. x .92" Width - 1/2" ID

A	B	C	D	E
2.50	.92	.501/.505	1.25	.50

Urethane	
Durometer	Part #
35	DR-9502-35UR-EX500
60	DR-9502-60UR-EX500
80	DR-9502-80UR-EX500
95	DR-9502-95UR-EX500

### 2.50" Dia. x .92" Width - 5/8" ID

A	B	C	D	E
2.50	.92	.626/.631	1.25	.50

Urethane	
Durometer	Part #
35	DR-9502-35UR-EX625
60	DR-9502-60UR-EX625
80	DR-9502-80UR-EX625
95	DR-9502-95UR-EX625

### 2.50" Dia. x .92" Width - 3/4" ID

A	B	C	D	E
2.50	.92	.751/.756	1.25	.50

Urethane	
Durometer	Part #
35	DR-9502-35UR-EX750
60	DR-9502-60UR-EX750
80	DR-9502-80UR-EX750
95	DR-9502-95UR-EX750

### 2.50" Dia. x .92" Width - 1.00" ID

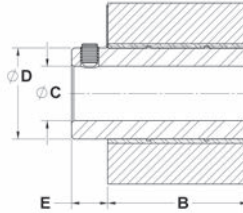
A	B	C	D	E
2.50	.92	1.001/1.006	1.37	.50

Urethane	
Durometer	Part #
35	DR-9502-35UR-EX10
60	DR-9502-60UR-EX10
80	DR-9502-80UR-EX10
95	DR-9502-95UR-EX10

### 2.50" Dia. x 1.94" Width - 1/2" ID

A	B	C	D	E
2.50	1.94	.501/.505	1.25	.50

Urethane	
Durometer	Part #
35	DR-502-35UR-EX500
60	DR-502-60UR-EX500
80	DR-502-80UR-EX500
95	DR-502-95UR-EX500



**2.50" Dia. x 1.94" Width - 5/8" ID**

A	B	C	D	E
2.50	1.94	.626/.631	1.25	.50

Urethane	
Durometer	Part #
35	DR-502-35UR-EX625
60	DR-502-60UR-EX625
80	DR-502-80UR-EX625
95	DR-502-95UR-EX625

**2.50" Dia. x 1.94" Width - 3/4" ID**

A	B	C	D	E
2.50	1.94	.751/.756	1.25	.50

Urethane	
Durometer	Part #
35	DR-502-35UR-EX750
60	DR-502-60UR-EX750
80	DR-502-80UR-EX750
95	DR-502-95UR-EX750

**2.50" Dia. x 1.94" Width - 1.00" ID**

A	B	C	D	E
2.50	1.94	1.001/1.006	1.37	.50

Urethane	
Durometer	Part #
35	DR-502-35UR-EX10
60	DR-502-60UR-EX10
80	DR-502-80UR-EX10
95	DR-502-95UR-EX10

**4.00" Dia. x .92" Width - 1/2" ID**

A	B	C	D	E
4.00	.92	.501/.505	1.25	.50

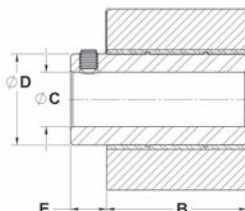
Durometer	Neoprene Part #	Nitrile Part #	Urethane Part #
20	DR-9754-20-EX500	DR-9754-20W-EX500	-
35	DR-9754-35-EX500	DR-9754-35W-EX500	DR-9754-35UR-EX500
60	-	-	DR-9754-60UR-EX500
80	-	-	DR-9754-80UR-EX500
95	-	-	DR-9754-95UR-EX500

**4.00" Dia. x .92" Width - 5/8" ID**

A	B	C	D	E
4.00	.92	.626/.631	1.25	.50

Durometer	Neoprene Part #	Nitrile Part #	Urethane Part #
20	DR-9754-20-EX625	DR-9754-20W-EX625	-
35	DR-9754-35-EX625	DR-9754-35W-EX625	DR-9754-35UR-EX625
60	-	-	DR-9754-60UR-EX625
80	-	-	DR-9754-80UR-EX625
95	-	-	DR-9754-95UR-EX625

Distributed by  
**AJACS**  
1-800-968-6868



### 4.00" Dia. x .92" Width - 3/4" ID

A	B	C	D	E
4.00	.92	.751/.756	1.25	.50
Durometer	Neoprene Part #	Nitrile Part #	Urethane Part #	
20	DR-9754-20-EX750	DR-9754-20W-EX750	-	
35	DR-9754-35-EX750	DR-9754-35W-EX750	DR-9754-35UR-EX750	
60	-	-	DR-9754-60UR-EX750	
80	-	-	DR-9754-80UR-EX750	
95	-	-	DR-9754-95UR-EX750	

### 4.00" Dia. x .92" Width - 1.00" ID

A	B	C	D	E
4.00	.92	1.001/1.006	1.37	.50
Durometer	Neoprene Part #	Nitrile Part #	Urethane Part #	
20	DR-9754-20-EX10	DR-9754-20W-EX10	-	
35	DR-9754-35-EX10	DR-9754-35W-EX10	DR-9754-35UR-EX10	
60	-	-	DR-9754-60UR-EX10	
80	-	-	DR-9754-80UR-EX10	
95	-	-	DR-9754-95UR-EX10	

### 4.00" Dia. x 1.94" Width - 1/2" ID

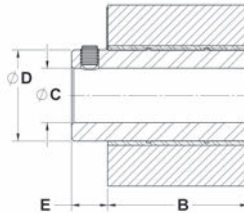
A	B	C	D	E
4.00	1.94	.501/.505	1.25	.50
Durometer	Neoprene Part #	Nitrile Part #	Urethane Part #	
20	DR-754-20-EX500	DR-754-20W-EX500	-	
35	DR-754-35-EX500	DR-754-35W-EX500	DR-754-35UR-EX500	
60	-	-	DR-754-60UR-EX500	
80	-	-	DR-754-80UR-EX500	
95	-	-	DR-754-95UR-EX500	

### 4.00" Dia. x 1.94" Width - 5/8" ID

A	B	C	D	E
4.00	1.94	.626/.631	1.25	.50
Durometer	Neoprene Part #	Nitrile Part #	Urethane Part #	
20	DR-754-20-EX625	DR-754-20W-EX625	-	
35	DR-754-35-EX625	DR-754-35W-EX625	DR-754-35UR-EX625	
60	-	-	DR-754-60UR-EX625	
80	-	-	DR-754-80UR-EX625	
95	-	-	DR-754-95UR-EX625	

### 4.00" Dia. x 1.94" Width - 3/4" ID

A	B	C	D	E
4.00	1.94	.751/.756	1.25	.50
Durometer	Neoprene Part #	Nitrile Part #	Urethane Part #	
20	DR-754-20-EX750	DR-754-20W-EX750	-	
35	DR-754-35-EX750	DR-754-35W-EX750	DR-754-35UR-EX750	
60	-	-	DR-754-60UR-EX750	
80	-	-	DR-754-80UR-EX750	
95	-	-	DR-754-95UR-EX750	

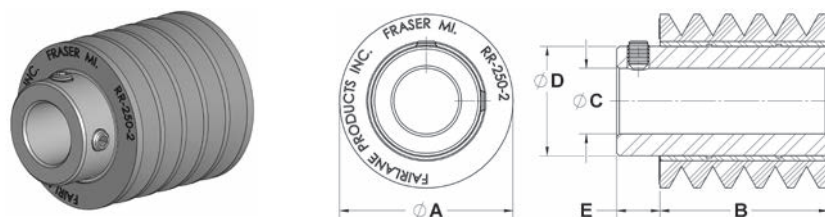


**4.00" Dia. x 1.94" Width - 1.00" ID**

A	B	C	D	E
4.00	1.94	1.001/1.006	1.37	.50
Durometer	Neoprene Part #	Nitrile Part #	Urethane Part #	
20	DR-754-20-EX10	DR-754-20W-EX10	-	
35	DR-754-35-EX10	DR-754-35W-EX10	DR-754-35UR-EX10	
60	-	-	DR-754-60UR-EX10	
80	-	-	DR-754-80UR-EX10	
95	-	-	DR-754-95UR-EX10	

Distributed by  
**AJACS**  
 1-800-968-6868





Finned rollers have grooves on the surface and are permanently bonded to a steel insert. Designed to be mounted on a shaft. A hub extends past the roller and is supplied with two set screws (90 degrees apart) to fasten onto the shaft. The grooves create less surface contact on the work piece and allow dirt, debris and liquids to pass. Rollers are available in neoprene, nitrile and urethane materials with hardness ranging from 20 to 60 durometer. See page 6 for material and durometer specifications. Line drawings shown are not proportional for all parts. View and download part CAD models at [www.fairlaneproducts.com](http://www.fairlaneproducts.com).

### 2.00" Dia. x .92" Width - 1/2" ID

A	B	C	D	E	# Of Fins	
2.00	.92	.501/.505	1.25	.50	3	
Durometer	Neoprene Part #	Nitrile Part #	Urethane Part #			
20	RR-9250-2-20-EX500	RR-9250-2-20W-EX500	-			
35	RR-9250-2-35-EX500	RR-9250-2-35W-EX500	RR-9250-2-35UR-EX500			
60	RR-9250-2-60-EX500	RR-9250-2-60W-EX500	RR-9250-2-60UR-EX500			

### 2.00" Dia. x .92" Width - 5/8" ID

A	B	C	D	E	# Of Fins	
2.00	.92	.626/.631	1.25	.50	3	
Durometer	Neoprene Part #	Nitrile Part #	Urethane Part #			
20	RR-9250-2-20-EX625	RR-9250-2-20W-EX625	-			
35	RR-9250-2-35-EX625	RR-9250-2-35W-EX625	RR-9250-2-35UR-EX625			
60	RR-9250-2-60-EX625	RR-9250-2-60W-EX625	RR-9250-2-60UR-EX625			

### 2.00" Dia. x .92" Width - 3/4" ID

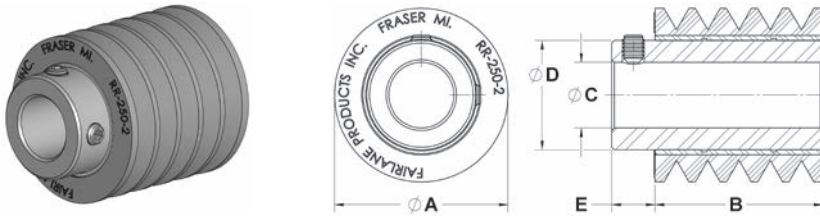
A	B	C	D	E	# Of Fins	
2.00	.92	.751/.756	1.25	.50	3	
Durometer	Neoprene Part #	Nitrile Part #	Urethane Part #			
20	RR-9250-2-20-EX750	RR-9250-2-20W-EX750	-			
35	RR-9250-2-35-EX750	RR-9250-2-35W-EX750	RR-9250-2-35UR-EX750			
60	RR-9250-2-60-EX750	RR-9250-2-60W-EX750	RR-9250-2-60UR-EX750			

### 2.00" Dia. x .92" Width - 1.00" ID

A	B	C	D	E	# Of Fins	
2.00	.92	1.001/1.006	1.37	.50	3	
Durometer	Neoprene Part #	Nitrile Part #	Urethane Part #			
20	RR-9250-2-20-EX10	RR-9250-2-20W-EX10	-			
35	RR-9250-2-35-EX10	RR-9250-2-35W-EX10	RR-9250-2-35UR-EX10			
60	RR-9250-2-60-EX10	RR-9250-2-60W-EX10	RR-9250-2-60UR-EX10			

### 2.00" Dia. x 1.94" Width - 1/2" ID

A	B	C	D	E	# Of Fins	
2.00	1.94	.501/.505	1.25	.50	6	
Durometer	Neoprene Part #	Nitrile Part #	Urethane Part #			
20	RR-250-2-20-EX500	RR-250-2-20W-EX500	-			
35	RR-250-2-35-EX500	RR-250-2-35W-EX500	RR-250-2-35UR-EX500			
60	RR-250-2-60-EX500	RR-250-2-60W-EX500	RR-250-2-60UR-EX500			



**2.00" Dia. x 1.94" Width - 5/8" ID**

A	B	C	D	E	# Of Fins
2.00	1.94	.626/.631	1.25	.50	6
Durometer	Neoprene Part #	Nitrile Part #	Urethane Part #		
20	RR-250-2-20-EX625	RR-250-2-20W-EX625	-		
35	RR-250-2-35-EX625	RR-250-2-35W-EX625	RR-250-2-35UR-EX625		
60	RR-250-2-60-EX625	RR-250-2-60W-EX625	RR-250-2-60UR-EX625		

**2.00" Dia. x 1.94" Width - 3/4" ID**

A	B	C	D	E	# Of Fins
2.00	1.94	.751/.756	1.25	.50	6
Durometer	Neoprene Part #	Nitrile Part #	Urethane Part #		
20	RR-250-2-20-EX750	RR-250-2-20W-EX750	-		
35	RR-250-2-35-EX750	RR-250-2-35W-EX750	RR-250-2-35UR-EX750		
60	RR-250-2-60-EX750	RR-250-2-60W-EX750	RR-250-2-60UR-EX750		

**2.00" Dia. x 1.94" Width - 1.00" ID**

A	B	C	D	E	# Of Fins
2.00	1.94	1.001/1.006	1.37	.50	6
Durometer	Neoprene Part #	Nitrile Part #	Urethane Part #		
20	RR-250-2-20-EX10	RR-250-2-20W-EX10	-		
35	RR-250-2-35-EX10	RR-250-2-35W-EX10	RR-250-2-35UR-EX10		
60	RR-250-2-60-EX10	RR-250-2-60W-EX10	RR-250-2-60UR-EX10		

**2.50" Dia. x .92" Width - 1/2" ID**

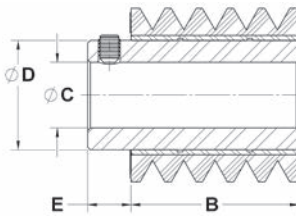
A	B	C	D	E	# Of Fins
2.50	.92	.501/.505	1.25	.50	3
Durometer	Neoprene Part #	Nitrile Part #	Urethane Part #		
20	RR-9250-20-EX500	RR-9250-20W-EX500	-		
35	RR-9250-35-EX500	RR-9250-35W-EX500	RR-9250-35UR-EX500		
60	RR-9250-60-EX500	RR-9250-60W-EX500	RR-9250-60UR-EX500		

**2.50" Dia. x .92" Width - 5/8" ID**

A	B	C	D	E	# Of Fins
2.50	.92	.626/.631	1.25	.50	3
Durometer	Neoprene Part #	Nitrile Part #	Urethane Part #		
20	RR-9250-20-EX625	RR-9250-20W-EX625	-		
35	RR-9250-35-EX625	RR-9250-35W-EX625	RR-9250-35UR-EX625		
60	RR-9250-60-EX625	RR-9250-60W-EX625	RR-9250-60UR-EX625		

**2.50" Dia. x .92" Width - 3/4" ID**

A	B	C	D	E	# Of Fins
2.50	.92	.751/.756	1.25	.50	3
Durometer	Neoprene Part #	Nitrile Part #	Urethane Part #		
20	RR-9250-20-EX750	RR-9250-20W-EX750	-		
35	RR-9250-35-EX750	RR-9250-35W-EX750	RR-9250-35UR-EX750		
60	RR-9250-60-EX750	RR-9250-60W-EX750	RR-9250-60UR-EX750		



### 2.50" Dia. x .92" Width - 1.00" ID

A	B	C	D	E	# Of Fins
2.50	.92	1.001/1.006	1.37	.50	3
Durometer	Neoprene Part #		Nitrile Part #		Urethane Part #
20	RR-9250-20-EX10		RR-9250-20W-EX10		-
35	RR-9250-35-EX10		RR-9250-35W-EX10		RR-9250-35UR-EX10
60	RR-9250-60-EX10		RR-9250-60W-EX10		RR-9250-60UR-EX10

### 2.50" Dia. x 1.94" Width - 1/2" ID

A	B	C	D	E	# Of Fins
2.50	1.94	.501/.505	1.25	.50	6
Durometer	Neoprene Part #		Nitrile Part #		Urethane Part #
20	RR-250-20-EX500		RR-250-20W-EX500		-
35	RR-250-35-EX500		RR-250-35W-EX500		RR-250-35UR-EX500
60	RR-250-60-EX500		RR-250-60W-EX500		RR-250-60UR-EX500

### 2.50" Dia. x 1.94" Width - 5/8" ID

A	B	C	D	E	# Of Fins
2.50	1.94	.626/.631	1.25	.50	6
Durometer	Neoprene Part #		Nitrile Part #		Urethane Part #
20	RR-250-20-EX625		RR-250-20W-EX625		-
35	RR-250-35-EX625		RR-250-35W-EX625		RR-250-35UR-EX625
60	RR-250-60-EX625		RR-250-60W-EX625		RR-250-60UR-EX625

### 2.50" Dia. x 1.94" Width - 3/4" ID

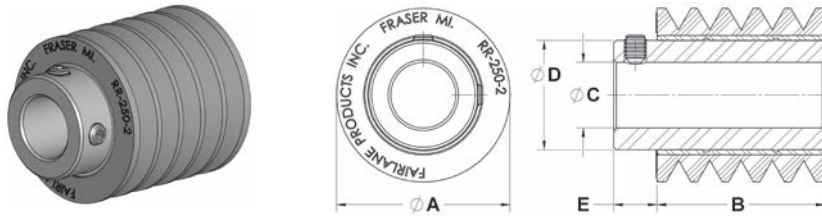
A	B	C	D	E	# Of Fins
2.50	1.94	.751/.756	1.25	.50	6
Durometer	Neoprene Part #		Nitrile Part #		Urethane Part #
20	RR-250-20-EX750		RR-250-20W-EX750		-
35	RR-250-35-EX750		RR-250-35W-EX750		RR-250-35UR-EX750
60	RR-250-60-EX750		RR-250-60W-EX750		RR-250-60UR-EX750

### 2.50" Dia. x 1.94" Width - 1.00" ID

A	B	C	D	E	# Of Fins
2.50	1.94	1.001/1.006	1.37	.50	6
Durometer	Neoprene Part #		Nitrile Part #		Urethane Part #
20	RR-250-20-EX10		RR-250-20W-EX10		-
35	RR-250-35-EX10		RR-250-35W-EX10		RR-250-35UR-EX10
60	RR-250-60-EX10		RR-250-60W-EX10		RR-250-60UR-EX10

### 2.50" Dia. x 1.94" Width - 1-1/4" ID

A	B	C	D	E	# Of Fins
2.50	1.94	1.251/1.256	1.63	.50	6
Durometer	Neoprene Part #				
35	RR-250-35-EX12				



**4.00" Dia. x 1.94" Width - 1/2" ID**

A	B	C	D	E	# Of Fins
4.00	1.94	.501/.505	1.25	.50	8
Durometer	Neoprene Part #	Nitrile Part #	Urethane Part #		
35	RR-667-35-EX500	RR-667-35W-EX500	RR-667-35UR-EX500		
60	RR-667-60-EX500	RR-667-60W-EX500	RR-667-60UR-EX500		

**4.00" Dia. x 1.94" Width - 5/8" ID**

A	B	C	D	E	# Of Fins
4.00	1.94	.626/.631	1.25	.50	8
Durometer	Neoprene Part #	Nitrile Part #	Urethane Part #		
35	RR-667-35-EX625	RR-667-35W-EX625	RR-667-35UR-EX625		
60	RR-667-60-EX625	RR-667-60W-EX625	RR-667-60UR-EX625		

**4.00" Dia. x 1.94" Width - 3/4" ID**

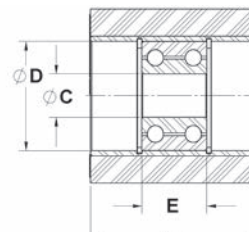
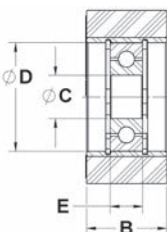
A	B	C	D	E	# Of Fins
4.00	1.94	.751/.756	1.25	.50	8
Durometer	Neoprene Part #	Nitrile Part #	Urethane Part #		
35	RR-667-35-EX750	RR-667-35W-EX750	RR-667-35UR-EX750		
60	RR-667-60-EX750	RR-667-60W-EX750	RR-667-60UR-EX750		

**4.00" Dia. x 1.94" Width - 1.00" ID**

A	B	C	D	E	# Of Fins
4.00	1.94	1.001/1.006	1.37	.50	8
Durometer	Neoprene Part #	Nitrile Part #	Urethane Part #		
35	RR-667-35-EX10	RR-667-35W-EX10	RR-667-35UR-EX10		
60	RR-667-60-EX10	RR-667-60W-EX10	RR-667-60UR-EX10		

**4.00" Dia. x 1.94" Width - 1-1/4" ID**

A	B	C	D	E	# Of Fins
4.00	1.94	1.251/1.256	1.63	.50	8
Durometer	Neoprene Part #	Urethane Part #			
35	RR-667-35-EX12	RR-667-35UR-EX12			
60	-	RR-667-60UR-EX12			



Solid rollers have a smooth surface and are permanently bonded to a steel insert with the bearings held into place with snap rings. They are available with standard bearings, precision bearings and sealed precision bearings based on your application and environment. Rollers are available in neoprene, nitrile and urethane materials with hardness ranging from 20 to 95 durometer. See page 6 for material and durometer specifications. Line drawings shown are not proportional for all parts. View and download part CAD models at [www.fairlaneproducts.com](http://www.fairlaneproducts.com). See pages 4 and 5 for bearing type specifications.

### 1.50" Dia. x 1.25" Width - Standard Bearing

A	B	C	D	E	# Of Bearings	Bearing Type
1.50	1.25	.313/.317	.870/.875	.498/.502	1	A
Durometer	Neoprene Part #	Nitrile Part #	Urethane Part #			
20	RR-215-20-B	RR-215-20W-B	-			
35	RR-215-35-B	RR-215-35W-B	RR-215-35UR-B			
60	RR-215-60-B	RR-215-60W-B	RR-215-60UR-B			
80	RR-215-80-B	RR-215-80W-B	RR-215-80UR-B			
95	-	-	RR-215-95UR-B			

### 1.50" Dia. x 1.25" Width - Precision/Precision Sealed Bearing\*\*

A	B	C	D	E*	# Of Bearings	Bearing Type
1.50	1.25	.3122/.3125	.8747/.8750	.5532/.5626	2	D/E
Durometer	Neoprene Part #	Nitrile Part #	Urethane Part #			
20	RR-215-20-BP	RR-215-20W-BP	-			
35	RR-215-35-BP	RR-215-35W-BP	RR-215-35UR-BP			
60	RR-215-60-BP	RR-215-60W-BP	RR-215-60UR-BP			
80	RR-215-80-BP	RR-215-80W-BP	RR-215-80UR-BP			
95	-	-	RR-215-95UR-BP			

Note - The part numbers above are supplied with precision bearings. Add "C" to the end of the part number for precision sealed bearing. \*E = .6766/.6860 for the precision sealed bearings. \*\*Special non-stock items.

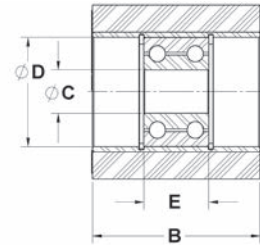
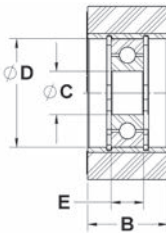
### 2.00" Dia. x .92" Width - Standard Bearing

A	B	C	D	E	# Of Bearings	Bearing Type
2.00	.92	.500/.505	1.245/1.250	.370/.380	1	B
Durometer	Neoprene Part #	Nitrile Part #	Urethane Part #			
20	RR-92020-20-B	RR-92020-20W-B	-			
35	RR-92020-35-B	RR-92020-35W-B	RR-92020-35UR-B			
60	RR-92020-60-B	RR-92020-60W-B	RR-92020-60UR-B			
80	RR-92020-80-B	RR-92020-80W-B	RR-92020-80UR-B			
95	-	-	RR-92020-95UR-B			

### 2.00" Dia. x .92" Width - Precision/Precision Sealed Bearing

A	B	C	D	E	# Of Bearings	Bearing Type
2.00	.92	.4997/.5000	1.1247/1.1250	.3703/.3750	1	F/G
Durometer	Neoprene Part #	Nitrile Part #	Urethane Part #			
20	RR-92020-20-BP	RR-92020-20W-BP	-			
35	RR-92020-35-BP	RR-92020-35W-BP	RR-92020-35UR-BP			
60	RR-92020-60-BP	RR-92020-60W-BP	RR-92020-60UR-BP			
80	RR-92020-80-BP	RR-92020-80W-BP	RR-92020-80UR-BP			
95	-	-	RR-92020-95UR-BP			

Note - The part numbers above are supplied with precision bearings. Add "C" to the end of the part number for precision sealed bearing.



**2.00" Dia. x 1.94" Width - Standard Bearing**

A	B	C	D	E	# Of Bearings	Bearing Type
2.00	1.94	.500/.505	1.245/1.250	.745/.755	1	C
Durometer	Neoprene Part #		Nitrile Part #		Urethane Part #	
20	RR-2020-20-B		RR-2020-20W-B		-	
35	RR-2020-35-B		RR-2020-35W-B		RR-2020-35UR-B	
60	RR-2020-60-B		RR-2020-60W-B		RR-2020-60UR-B	
80	RR-2020-80-B		RR-2020-80W-B		RR-2020-80UR-B	
95	-		-		RR-2020-95UR-B	

**2.00" Dia. x 1.94" Width - Precision/Precision Sealed Bearing**

A	B	C	D	E	# Of Bearings	Bearing Type
2.00	1.94	.4997/.5000	1.1247/1.1250	.7406/.7500	2	F/G
Durometer	Neoprene Part #		Nitrile Part #		Urethane Part #	
20	RR-2020-20-BP		RR-2020-20W-BP		-	
35	RR-2020-35-BP		RR-2020-35W-BP		RR-2020-35UR-BP	
60	RR-2020-60-BP		RR-2020-60W-BP		RR-2020-60UR-BP	
80	RR-2020-80-BP		RR-2020-80W-BP		RR-2020-80UR-BP	
95	-		-		RR-2020-95UR-BP	

Note - The part numbers above are supplied with precision bearings. Add "C" to the end of the part number for precision sealed bearing.

**2.50" Dia. x .92" Width - Standard Bearing**

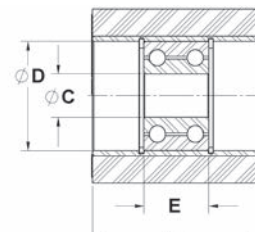
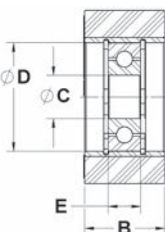
A	B	C	D	E	# Of Bearings	Bearing Type
2.50	.92	.500/.505	1.245/1.250	.370/.380	1	B
Durometer	Neoprene Part #		Nitrile Part #		Urethane Part #	
20	RR-9502-20-B		RR-9502-20W-B		-	
35	RR-9502-35-B		RR-9502-35W-B		RR-9502-35UR-B	
60	RR-9502-60-B		RR-9502-60W-B		RR-9502-60UR-B	
80	RR-9502-80-B		RR-9502-80W-B		RR-9502-80UR-B	
95	-		-		RR-9502-95UR-B	

**2.50" Dia. x .92" Width - Precision/Precision Sealed Bearing**

A	B	C	D	E	# Of Bearings	Bearing Type
2.50	.92	.4997/.5000	1.1247/1.1250	.3703/.3750	1	F/G
Durometer	Neoprene Part #		Nitrile Part #		Urethane Part #	
20	RR-9502-20-BP		RR-9502-20W-BP		-	
35	RR-9502-35-BP		RR-9502-35W-BP		RR-9502-35UR-BP	
60	RR-9502-60-BP		RR-9502-60W-BP		RR-9502-60UR-BP	
80	RR-9502-80-BP		RR-9502-80W-BP		RR-9502-80UR-BP	
95	-		-		RR-9502-95UR-BP	

Note - The part numbers above are supplied with precision bearings. Add "C" to the end of the part number for precision sealed bearing.





### 2.50" Dia. x 1.94" Width - Standard Bearing

A	B	C	D	E	# Of Bearings	Bearing Type
2.50	1.94	.500/.505	1.245/1.250	.745/.755	1	C
Durometer	Neoprene Part #	Nitrile Part #	Urethane Part #			
20	RR-502-20-B	RR-502-20W-B	-			
35	RR-502-35-B	RR-502-35W-B	RR-502-35UR-B			
60	RR-502-60-B	RR-502-60W-B	RR-502-60UR-B			
80	RR-502-80-B	RR-502-80W-B	RR-502-80UR-B			
95	-	-	RR-502-95UR-B			

### 2.50" Dia. x 1.94" Width - Precision/Precision Sealed Bearing

A	B	C	D	E	# Of Bearings	Bearing Type
2.50	1.94	.4997/.5000	1.1247/1.1250	.7406/.7500	2	F/G
Durometer	Neoprene Part #	Nitrile Part #	Urethane Part #			
20	RR-502-20-BP	RR-502-20W-BP	-			
35	RR-502-35-BP	RR-502-35W-BP	RR-502-35UR-BP			
60	RR-502-60-BP	RR-502-60W-BP	RR-502-60UR-BP			
80	RR-502-80-BP	RR-502-80W-BP	RR-502-80UR-BP			
95	-	-	RR-502-95UR-BP			

Note - The part numbers above are supplied with precision bearings. Add "C" to the end of the part number for precision sealed bearing.

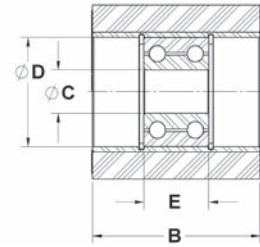
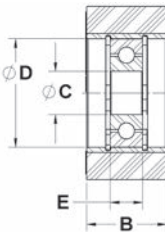
### 4.00" Dia. x .92" Width - Standard Bearing

A	B	C	D	E	# Of Bearings	Bearing Type
4.00	.92	.500/.505	1.245/1.1250	.370/.380	1	B
Durometer	Neoprene Part #	Nitrile Part #	Urethane Part #			
20	RR-9754-20-B	RR-9754-20W-B	-			
35	RR-9754-35-B	RR-9754-35W-B	RR-9754-35UR-B			
60	RR-9754-60-B	RR-9754-60W-B	RR-9754-60UR-B			
80	RR-9754-80-B	RR-9754-80W-B	RR-9754-80UR-B			
95	-	-	RR-9754-95UR-B			

### 4.00" Dia. x .92" Width - Precision/Precision Sealed Bearing

A	B	C	D	E	# Of Bearings	Bearing Type
4.00	.92	.4997/.5000	1.1247/1.1250	.3703/.3750	1	F/G
Durometer	Neoprene Part #	Nitrile Part #	Urethane Part #			
20	RR-9754-20-BP	RR-9754-20W-BP	-			
35	RR-9754-35-BP	RR-9754-35W-BP	RR-9754-35UR-BP			
60	RR-9754-60-BP	RR-9754-60W-BP	RR-9754-60UR-BP			
80	RR-9754-80-BP	RR-9754-80W-BP	RR-9754-80UR-BP			
95	-	-	RR-9754-95UR-BP			

Note - The part numbers above are supplied with precision bearings. Add "C" to the end of the part number for precision sealed bearing.



**4.00" Dia. x 1.94" Width - Standard Bearing**

A	B	C	D	E	# Of Bearings	Bearing Type
4.00	1.94	.500/.505	1.245/1.250	.745/.755	1	C
Durometer	Neoprene Part #		Nitrile Part #		Urethane Part #	
20	RR-754-20-B		RR-754-20W-B		-	
35	RR-754-35-B		RR-754-35W-B		RR-754-35UR-B	
60	RR-754-60-B		RR-754-60W-B		RR-754-60UR-B	
80	RR-754-80-B		RR-754-80W-B		RR-754-80UR-B	
95	-		-		RR-754-95UR-B	

**4.00" Dia. x 1.94" Width - Precision/Precision Sealed Bearing**

A	B	C	D	E	# Of Bearings	Bearing Type
4.00	1.94	.4997/.5000	1.1247/1.1250	.7406/.7500	2	F/G
Durometer	Neoprene Part #		Nitrile Part #		Urethane Part #	
20	RR-754-20-BP		RR-754-20W-BP		-	
35	RR-754-35-BP		RR-754-35W-BP		RR-754-35UR-BP	
60	RR-754-60-BP		RR-754-60W-BP		RR-754-60UR-BP	
80	RR-754-80-BP		RR-754-80W-BP		RR-754-80UR-BP	
95	-		-		RR-754-95UR-BP	

Note - The part numbers above are supplied with precision bearings. Add "C" to the end of the part number for precision sealed bearing.

**5.00" Dia. x 1.94" Width - Standard Bearing**

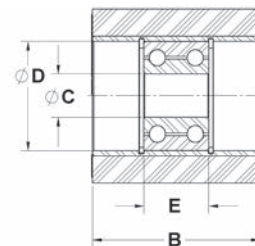
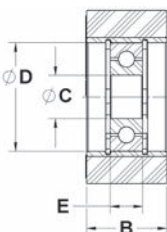
A	B	C	D	E	# Of Bearings	Bearing Type
5.00	1.94	.500/.505	1.245/1.250	.745/.755	1	C
Durometer	Urethane Part #					
35	RR-5020-35UR-B					
60	RR-5020-60UR-B					
80	RR-5020-80UR-B					

**5.00" Dia. x 1.94" Width - Precision/Precision Sealed Bearing**

A	B	C	D	E	# Of Bearings	Bearing Type
5.00	1.94	.4997/.5000	1.1247/1.1250	.7406/.7500	2	F/G
Durometer	Urethane Part #					
35	RR-5020-35UR-BP					
60	RR-5020-60UR-BP					
80	RR-5020-80UR-BP					

Note - The part numbers above are supplied with precision bearings. Add "C" to the end of the part number for precision sealed bearing.





### 6.00" Dia. x 1.94" Width - Standard Bearing

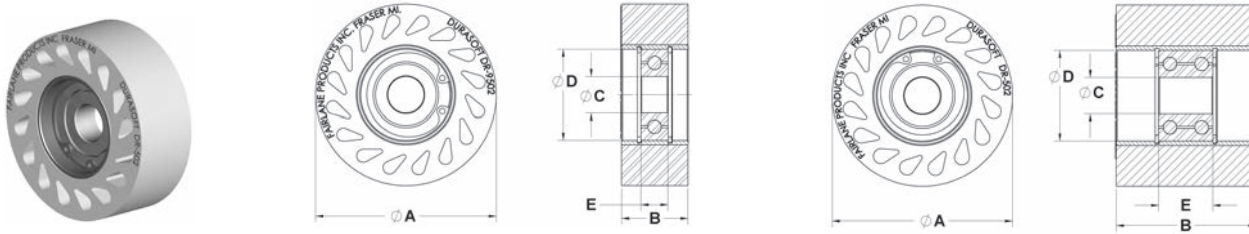
A	B	C	D	E	# Of Bearings	Bearing Type
6.00	1.94	.500/.505	1.245/1.250	.745/.755	1	C
<b>Urethane</b>						
<b>Durometer</b>	<b>Part #</b>					
35	RR-6020-35UR-B					
60	RR-6020-60UR-B					
80	RR-6020-80UR-B					

### 6.00" Dia. x 1.94" Width - Precision/Precision Sealed Bearing

A	B	C	D	E	# Of Bearings	Bearing Type
6.00	1.94	.4997/.5000	1.1247/1.1250	.7406/.7500	2	F/G
<b>Urethane</b>						
<b>Durometer</b>	<b>Part #</b>					
35	RR-6020-35UR-BP					
60	RR-6020-60UR-BP					
80	RR-6020-80UR-BP					

Note - The part numbers above are supplied with precision bearings. Add "C" to the end of the part number for precision sealed bearing.

Distributed by  
**AJACS**  
 1-800-968-6868



DuraSoft rollers have a smooth surface and are permanently bonded to a steel insert with the bearings held into place with snap rings. They are available with standard bearings, precision bearings and sealed precision bearings based on your application and environment. The "teardrop" holes allow the roller to flex for firm yet non-damaging contact. Rollers are available in neoprene, nitrile and urethane materials with hardness ranging from 20 to 95 durometer. See page 6 for material and durometer specifications. Line drawings shown are not proportional for all parts. View and download part CAD models at [www.fairlaneproducts.com](http://www.fairlaneproducts.com). See pages 4 and 5 for bearing type specifications.

**2.50" Dia. x .92" Width - Standard Bearing**

A	B	C	D	E	# Of Bearings	Bearing Type
2.50	.92	.500/.505	1.245/1.250	.370/.380	1	B
<b>Urethane</b>						
<b>Durometer</b>	<b>Part #</b>					
35	DR-9502-35UR-B					
60	DR-9502-60UR-B					
80	DR-9502-80UR-B					
95	DR-9502-95UR-B					

**2.50" Dia. x .92" Width - Precision/Precision Sealed Bearing**

A	B	C	D	E	# Of Bearings	Bearing Type
2.50	.92	.4997/.5000	1.1247/1.1250	.3703/.3750	1	F/G
<b>Urethane</b>						
<b>Durometer</b>	<b>Part #</b>					
35	DR-9502-35UR-BP					
60	DR-9502-60UR-BP					
80	DR-9502-80UR-BP					
95	DR-9502-95UR-BP					

Note - The part numbers above are supplied with precision bearings. Add "C" to the end of the part number for precision sealed bearing.

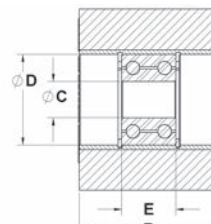
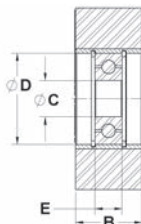
**2.50" Dia. x 1.94" Width - Standard Bearing**

A	B	C	D	E	# Of Bearings	Bearing Type
2.50	1.94	.500/.505	1.245/1.250	.745/.755	1	C
<b>Urethane</b>						
<b>Durometer</b>	<b>Part #</b>					
35	DR-502-35UR-B					
60	DR-502-60UR-B					
80	DR-502-80UR-B					
95	DR-502-95UR-B					

**2.50" Dia. x 1.94" Width - Precision/Precision Sealed Bearing**

A	B	C	D	E	# Of Bearings	Bearing Type
2.50	1.94	.4997/.5000	1.1247/1.1250	.7406/.7500	2	F/G
<b>Urethane</b>						
<b>Durometer</b>	<b>Part #</b>					
35	DR-502-35UR-BP					
60	DR-502-60UR-BP					
80	DR-502-80UR-BP					
95	DR-502-95UR-BP					

Note - The part numbers above are supplied with precision bearings. Add "C" to the end of the part number for precision sealed bearing.



### 4.00" Dia. x .92" Width - Standard Bearing

A	B	C	D	E	# Of Bearings	Bearing Type
4.00	.92	.500/.505	1.245/1.250	.370/.380	1	B
Durometer	Neoprene Part #	Nitrile Part #	Urethane Part #			
20	DR-9754-20-B	DR-9754-20W-B	-			
35	DR-9754-35-B	DR-9754-35W-B	DR-9754-35UR-B			
60	-	-	DR-9754-60UR-B			
80	-	-	DR-9754-80UR-B			
95	-	-	DR-9754-95UR-B			

### 4.00" Dia. x .92" Width - Precision/Precision Sealed Bearing

A	B	C	D	E	# Of Bearings	Bearing Type
4.00	.92	.4997/.5000	1.1247/1.1250	.3703/.3750	1	F/G
Durometer	Neoprene Part #	Nitrile Part #	Urethane Part #			
20	DR-9754-20-BP	DR-9754-20W-BP	-			
35	DR-9754-35-BP	DR-9754-35W-BP	DR-9754-35UR-BP			
60	-	-	DR-9754-60UR-BP			
80	-	-	DR-9754-80UR-BP			
95	-	-	DR-9754-95UR-BP			

Note - The part numbers above are supplied with precision bearings. Add "C" to the end of the part number for precision sealed bearing.

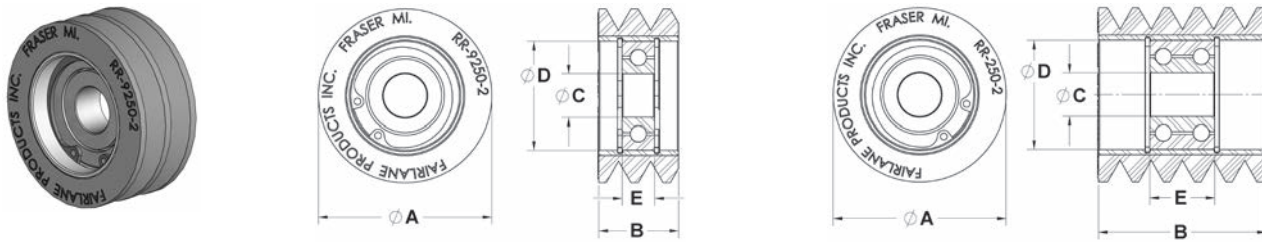
### 4.00" Dia. x 1.94" Width - Standard Bearing

A	B	C	D	E	# Of Bearings	Bearing Type
4.00	1.94	.500/.505	1.245/1.250	.745/.755	1	C
Durometer	Neoprene Part #	Nitrile Part #	Urethane Part #			
20	DR-754-20-B	DR-754-20W-B	-			
35	DR-754-35-B	DR-754-35W-B	DR-754-35UR-B			
60	-	-	DR-754-60UR-B			
80	-	-	DR-754-80UR-B			
95	-	-	DR-754-95UR-B			

### 4.00" Dia. x 1.94" Width - Precision/Precision Sealed Bearing

A	B	C	D	E	# Of Bearings	Bearing Type
4.00	1.94	.4997/.5000	1.1247/1.1250	.7406/.7500	2	F/G
Durometer	Neoprene Part #	Nitrile Part #	Urethane Part #			
20	DR-754-20-BP	DR-754-20W-BP	-			
35	DR-754-35-BP	DR-754-35W-BP	DR-754-35UR-BP			
60	-	-	DR-754-60UR-BP			
80	-	-	DR-754-80UR-BP			
95	-	-	DR-754-95UR-BP			

Note - The part numbers above are supplied with precision bearings. Add "C" to the end of the part number for precision sealed bearing.



Finned rollers have grooves on the surface and are permanently bonded to a steel insert with the bearings held into place with snap rings. They are available with standard bearings, precision bearings and sealed precision bearings based on your application and environment. The grooves create less surface contact on the work piece and allow dirt, debris and liquids to pass. Rollers are available in neoprene, nitrile and urethane materials with hardness ranging from 20 to 60 durometer. See page 6 for material and durometer specifications. Line drawings shown are not proportional for all parts. View and download part CAD models at [www.fairlaneproducts.com](http://www.fairlaneproducts.com). See pages 4 and 5 for bearing type specifications.

**2.00" Dia. x .92" Width - Standard Bearing**

A	B	C	D	E	# Of Bearings	Bearing Type	# Of Fins
2.00	.92	.500/.505	1.245/1.250	.370/.380	1	B	3
Durometer	Neoprene Part #		Nitrile Part #		Urethane Part #		
20	RR-9250-2-20-B		RR-9250-2-20W-B		-		
35	RR-9250-2-35-B		RR-9250-2-35W-B		RR-9250-2-35UR-B		
60	RR-9250-2-60-B		RR-9250-2-60W-B		RR-9250-2-60UR-B		

**2.00" Dia. x .92" Width - Precision/Precision Sealed Bearing**

A	B	C	D	E	# Of Bearings	Bearing Type	# Of Fins
2.00	.92	.4997/.5000	1.1247/1.1250	.3703/.3750	1	F/G	3
Durometer	Neoprene Part #		Nitrile Part #		Urethane Part #		
20	RR-9250-2-20-BP		RR-9250-2-20W-BP		-		
35	RR-9250-2-35-BP		RR-9250-2-35W-BP		RR-9250-2-35UR-BP		
60	RR-9250-2-60-BP		RR-9250-2-60W-BP		RR-9250-2-60UR-BP		

Note - The part numbers above are supplied with precision bearings. Add "C" to the end of the part number for precision sealed bearing.

**2.00" Dia. x 1.94" Width - Standard Bearing**

A	B	C	D	E	# Of Bearings	Bearing Type	# Of Fins
2.00	1.94	.500/.505	1.245/1.250	.745/.755	1	C	6
Durometer	Neoprene Part #		Nitrile Part #		Urethane Part #		
20	RR-250-2-20-B		RR-250-2-20W-B		-		
35	RR-250-2-35-B		RR-250-2-35W-B		RR-250-2-35UR-B		
60	RR-250-2-60-B		RR-250-2-60W-B		RR-250-2-60UR-B		

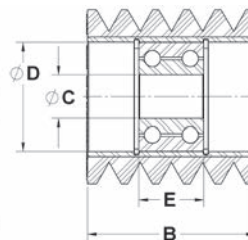
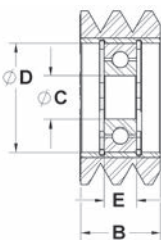
**2.00" Dia. x 1.94" Width - Precision/Precision Sealed Bearing**

A	B	C	D	E	# Of Bearings	Bearing Type	# Of Fins
2.00	1.94	.4997/.5000	1.1247/1.1250	.7406/.7500	2	F/G	6
Durometer	Neoprene Part #		Nitrile Part #		Urethane Part #		
20	RR-250-2-20-BP		RR-250-2-20W-BP		-		
35	RR-250-2-35-BP		RR-250-2-35W-BP		RR-250-2-35UR-BP		
60	RR-250-2-60-BP		RR-250-2-60W-BP		RR-250-2-60UR-BP		

Note - The part numbers above are supplied with precision bearings. Add "C" to the end of the part number for precision sealed bearing.

**2.50" Dia. x .92" Width - Standard Bearing**

A	B	C	D	E	# Of Bearings	Bearing Type	# Of Fins
2.50	.92	.500/.505	1.245/1.250	.370/.380	1	B	3
Durometer	Neoprene Part #		Nitrile Part #		Urethane Part #		
20	RR-9250-20-B		RR-9250-20W-B		-		
35	RR-9250-35-B		RR-9250-35W-B		RR-9250-35UR-B		
60	RR-9250-60-B		RR-9250-60W-B		RR-9250-60UR-B		



### 2.50" Dia. x .92" Width - Precision/Precision Sealed Bearing

A	B	C	D	E	# Of Bearings	Bearing Type	# Of Fins
2.50	.92	.4997/1.5000	1.1247/1.1250	.3703/.3750	1	F/G	3
Durometer	Neoprene Part #		Nitrile Part #		Urethane Part #		
20	RR-9250-20-BP		RR-9250-20W-BP		-		
35	RR-9250-35-BP		RR-9250-35W-BP		RR-9250-35UR-BP		
60	RR-9250-60-BP		RR-9250-60W-BP		RR-9250-60UR-BP		

Note - The part numbers above are supplied with precision bearings. Add "C" to the end of the part number for precision sealed bearing.

### 2.50" Dia. x 1.94" Width - Standard Bearing

A	B	C	D	E	# Of Bearings	Bearing Type	# Of Fins
2.50	1.94	.500/1.505	1.245/1.250	.745/1.755	1	C	6
Durometer	Neoprene Part #		Nitrile Part #		Urethane Part #		
20	RR-250-20-B		RR-250-20W-B		-		
35	RR-250-35-B		RR-250-35W-B		RR-250-35UR-B		
60	RR-250-60-B		RR-250-60W-B		RR-250-60UR-B		

### 2.50" Dia. x 1.94" Width - Precision/Precision Sealed Bearing

A	B	C	D	E	# Of Bearings	Bearing Type	# Of Fins
2.50	1.94	.4997/1.5000	1.1247/1.1250	.7406/1.7500	2	F/G	6
Durometer	Neoprene Part #		Nitrile Part #		Urethane Part #		
20	RR-250-20-BP		RR-250-20W-BP		-		
35	RR-250-35-BP		RR-250-35W-BP		RR-250-35UR-BP		
60	RR-250-60-BP		RR-250-60W-BP		RR-250-60UR-BP		

Note - The part numbers above are supplied with precision bearings. Add "C" to the end of the part number for precision sealed bearing.

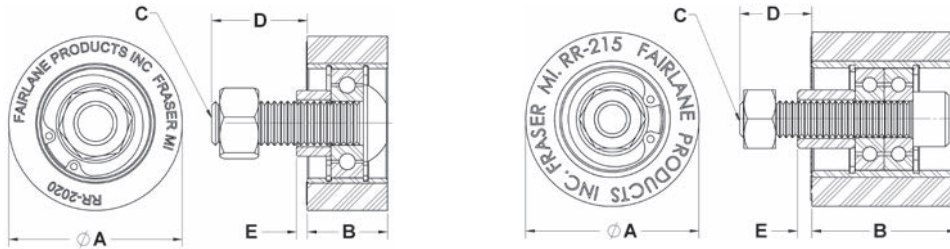
### 4.00" Dia. x 1.94" Width - Standard Bearing

A	B	C	D	E	# Of Bearings	Bearing Type	# Of Fins
4.00	1.94	.500/1.505	1.245/1.250	.745/1.755	1	C	8
Durometer	Neoprene Part #		Nitrile Part #		Urethane Part #		
35	RR-667-35-B		RR-667-35W-B		RR-667-35UR-B		
60	RR-667-60-B		RR-667-60W-B		RR-667-60UR-B		

### 4.00" Dia. x 1.94" Width - Precision/Precision Sealed Bearing

A	B	C	D	E	# Of Bearings	Bearing Type	# Of Fins
4.00	1.94	.4997/1.5000	1.1247/1.1250	.7406/1.7500	2	F/G	8
Durometer	Neoprene Part #		Nitrile Part #		Urethane Part #		
35	RR-667-35-BP		RR-667-35W-BP		RR-667-35UR-BP		
60	RR-667-60-BP		RR-667-60W-BP		RR-667-60UR-BP		

Note - The part numbers above are supplied with precision bearings. Add "C" to the end of the part number for precision sealed bearing.



Solid rollers have a smooth surface and are permanently bonded to a steel insert with the bearings held in place with snap rings. They come assembled with a socket head cap screw, spacer and locknut for fast easy mounting. They are available with standard bearings, precision bearings and sealed precision bearings based on your application and environment. Rollers are available in neoprene, nitrile and urethane materials with hardness ranging from 20 to 95 durometer. See page 6 for material and durometer specifications. Line drawings shown are not proportional for all parts. View and download part CAD models at [www.fairlaneproducts.com](http://www.fairlaneproducts.com). See pages 4 and 5 for bearing type specifications.

**1.50" Dia. x 1.25" Width - Standard Bearing**

A	B	C	D	E	# Of Bearings	Bearing Type
1.50	1.25	5/16-18x1.50 SHCS	.63	.12	1	A
Durometer	Neoprene Part #	Nitrile Part #	Urethane Part #			
20	RR-215-20-C	RR-215-20W-C	-			
35	RR-215-35-C	RR-215-35W-C	RR-215-35UR-C			
60	RR-215-60-C	RR-215-60W-C	RR-215-60UR-C			
80	RR-215-80-C	RR-215-80W-C	RR-215-80UR-C			
95	-	-	RR-215-95UR-C			

**1.50" Dia. x 1.25" Width - Precision/Precision Sealed Bearing\*\***

A	B	C	D	E	# Of Bearings	Bearing Type
1.50	1.25	5/16-18x1.50 SHCS	.63	.12	2	D/E
Durometer	Neoprene Part #	Nitrile Part #	Urethane Part #			
20	RR-215-20-CP	RR-215-20W-CP	-			
35	RR-215-35-CP	RR-215-35W-CP	RR-215-35UR-CP			
60	RR-215-60-CP	RR-215-60W-CP	RR-215-60UR-CP			
80	RR-215-80-CP	RR-215-80W-CP	RR-215-80UR-CP			
95	-	-	RR-215-95UR-CP			

Note - The part numbers above are supplied with precision bearings. Add "C" to the end of the part number for precision sealed bearing. \*\*Special non-stock items.

**2.00" Dia. x .92" Width - Standard Bearing**

A	B	C	D	E	# Of Bearings	Bearing Type
2.00	.92	1/2-13x1.75 BHCS	1.10	.12	1	B
Durometer	Neoprene Part #	Nitrile Part #	Urethane Part #			
20	RR-92020-20-C	RR-92020-20W-C	-			
35	RR-92020-35-C	RR-92020-35W-C	RR-92020-35UR-C			
60	RR-92020-60-C	RR-92020-60W-C	RR-92020-60UR-C			
80	RR-92020-80-C	RR-92020-80W-C	RR-92020-80UR-C			
95	-	-	RR-92020-95UR-C			

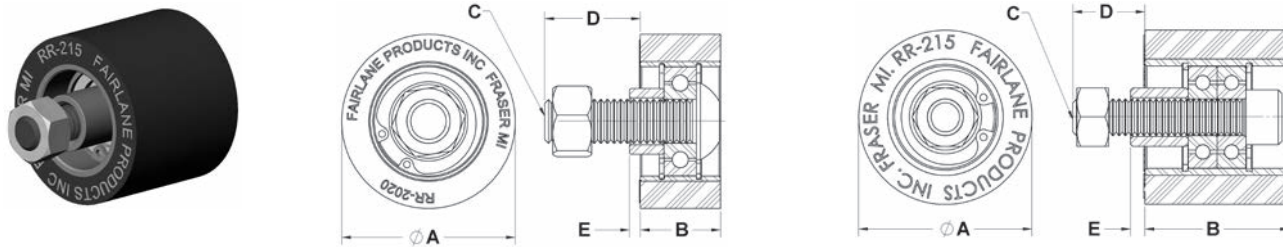
**2.00" Dia. x .92" Width - Precision/Precision Sealed Bearing**

A	B	C	D	E	# Of Bearings	Bearing Type
2.00	.92	1/2-13x1.75 LHCS	1.10	.12	1	F/G
Durometer	Neoprene Part #	Nitrile Part #	Urethane Part #			
20	RR-92020-20-CP	RR-92020-20W-CP	-			
35	RR-92020-35-CP	RR-92020-35W-CP	RR-92020-35UR-CP			
60	RR-92020-60-CP	RR-92020-60W-CP	RR-92020-60UR-CP			
80	RR-92020-80-CP	RR-92020-80W-CP	RR-92020-80UR-CP			
95	-	-	RR-92020-95UR-CP			

Note - The part numbers above are supplied with precision bearings. Add "C" to the end of the part number for precision sealed bearing.



## STUD MOUNT WITH BEARING - Solid Rollers (cont)



### 2.00" Dia. x 1.94" Width - Standard Bearing

A	B	C	D	E	# Of Bearings	Bearing Type	
2.00	1.94	1/2-13x2.75 SHCS	1.41	.25	1	C	
Durometer	Neoprene Part #	Nitrile Part #	Urethane Part #				
20	RR-2020-20-C	RR-2020-20W-C	-				
35	RR-2020-35-C	RR-2020-35W-C	RR-2020-35UR-C				
60	RR-2020-60-C	RR-2020-60W-C	RR-2020-60UR-C				
80	RR-2020-80-C	RR-2020-80W-C	RR-2020-80UR-C				
95	-	-	RR-2020-95UR-C				

### 2.00" Dia. x 1.94" Width - Precision/Precision Sealed Bearing

A	B	C	D	E	# Of Bearings	Bearing Type	
2.00	1.94	1/2-13x2.75 SHCS	1.41	.25	2	F/G	
Durometer	Neoprene Part #	Nitrile Part #	Urethane Part #				
20	RR-2020-20-CP	RR-2020-20W-CP	-				
35	RR-2020-35-CP	RR-2020-35W-CP	RR-2020-35UR-CP				
60	RR-2020-60-CP	RR-2020-60W-CP	RR-2020-60UR-CP				
80	RR-2020-80-CP	RR-2020-80W-CP	RR-2020-80UR-CP				
95	-	-	RR-2020-95UR-CP				

Note - The part numbers above are supplied with precision bearings. Add "C" to the end of the part number for precision sealed bearing.

### 2.50" Dia. x .92" Width - Standard Bearing

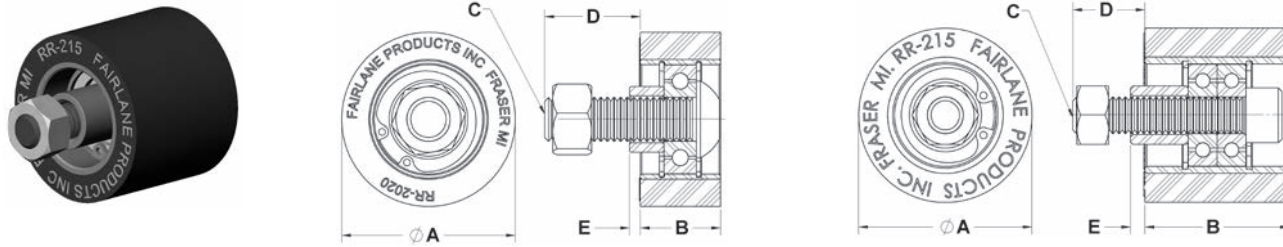
A	B	C	D	E	# Of Bearings	Bearing Type	
2.50	.92	1/2-13x1.75 BHCS	1.10	.12	1	B	
Durometer	Neoprene Part #	Nitrile Part #	Urethane Part #				
20	RR-9502-20-C	RR-9502-20W-C	-				
35	RR-9502-35-C	RR-9502-35W-C	RR-9502-35UR-C				
60	RR-9502-60-C	RR-9502-60W-C	RR-9502-60UR-C				
80	RR-9502-80-C	RR-9502-80W-C	RR-9502-80UR-C				
95	-	-	RR-9502-95UR-C				

### 2.50" Dia. x .92" Width - Precision/Precision Sealed Bearing

A	B	C	D	E	# Of Bearings	Bearing Type	
2.50	.92	1/2-13x1.75 LHCS	1.10	.12	1	F/G	
Durometer	Neoprene Part #	Nitrile Part #	Urethane Part #				
20	RR-9502-20-CP	RR-9502-20W-CP	-				
35	RR-9502-35-CP	RR-9502-35W-CP	RR-9502-35UR-CP				
60	RR-9502-60-CP	RR-9502-60W-CP	RR-9502-60UR-CP				
80	RR-9502-80-CP	RR-9502-80W-CP	RR-9502-80UR-CP				
95	-	-	RR-9502-95UR-CP				

Note - The part numbers above are supplied with precision bearings. Add "C" to the end of the part number for precision sealed bearing.





**2.50" Dia. x 1.94" Width - Standard Bearing**

A	B	C	D	E	# Of Bearings	Bearing Type	
2.50	1.94	1/2-13x2.75 SHCS	1.41	.25	1	C	
Durometer	Neoprene Part #	Nitrile Part #	Urethane Part #				
20	RR-502-20-C	RR-502-20W-C	-				
35	RR-502-35-C	RR-502-35W-C	RR-502-35UR-C				
60	RR-502-60-C	RR-502-60W-C	RR-502-60UR-C				
80	RR-502-80-C	RR-502-80W-C	RR-502-80UR-C				
95	-	-	RR-502-95UR-C				

**2.50" Dia. x 1.94" Width - Precision/Precision Sealed Bearing**

A	B	C	D	E	# Of Bearings	Bearing Type
2.50	1.94	1/2-13x2.75 SHCS	1.41	.25	2	F/G
Durometer	Neoprene Part #	Nitrile Part #	Urethane Part #			
20	RR-502-20-CP	RR-502-20W-CP	-			
35	RR-502-35-CP	RR-502-35W-CP	RR-502-35UR-CP			
60	RR-502-60-CP	RR-502-60W-CP	RR-502-60UR-CP			
80	RR-502-80-CP	RR-502-80W-CP	RR-502-80UR-CP			
95	-	-	RR-502-95UR-CP			

Note - The part numbers above are supplied with precision bearings. Add "C" to the end of the part number for precision sealed bearing.

**4.00" Dia. x .92" Width - Standard Bearing**

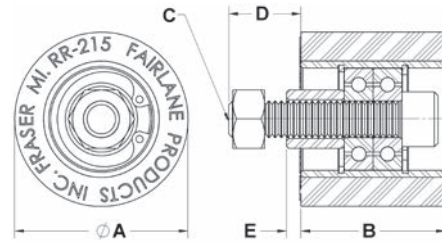
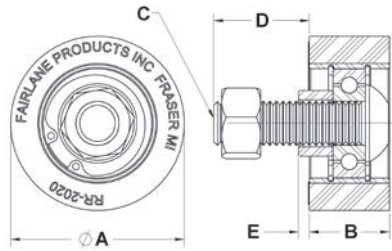
A	B	C	D	E	# Of Bearings	Bearing Type
4.00	.92	1/2-13x1.75 BHCS	1.10	.12	1	B
Durometer	Neoprene Part #	Nitrile Part #	Urethane Part #			
20	RR-9754-20-C	RR-9754-20W-C	-			
35	RR-9754-35-C	RR-9754-35W-C	RR-9754-35UR-C			
60	RR-9754-60-C	RR-9754-60W-C	RR-9754-60UR-C			
80	RR-9754-80-C	RR-9754-80W-C	RR-9754-80UR-C			
95	-	-	RR-9754-95UR-C			

**4.00" Dia. x .92" Width - Precision/Precision Sealed Bearing**

A	B	C	D	E	# Of Bearings	Bearing Type
4.00	.92	1/2-13x1.75 LHCS	1.10	.12	1	F/G
Durometer	Neoprene Part #	Nitrile Part #	Urethane Part #			
20	RR-9754-20-CP	RR-9754-20W-CP	-			
35	RR-9754-35-CP	RR-9754-35W-CP	RR-9754-35UR-CP			
60	RR-9754-60-CP	RR-9754-60W-CP	RR-9754-60UR-CP			
80	RR-9754-80-CP	RR-9754-80W-CP	RR-9754-80UR-CP			
95	-	-	RR-9754-95UR-CP			

Note - The part numbers above are supplied with precision bearings. Add "C" to the end of the part number for precision sealed bearing.

## STUD MOUNT WITH BEARING - Solid Rollers (cont)



### 4.00" Dia. x 1.94" Width - Standard Bearing

A	B	C	D	E	# Of Bearings	Bearing Type	
4.00	1.94	1/2-13x2.75 SHCS	1.41	.25	1	C	
Durometer	Neoprene Part #	Nitrile Part #	Urethane Part #				
20	RR-754-20-C	RR-754-20W-C	-				
35	RR-754-35-C	RR-754-35W-C	RR-754-35UR-C				
60	RR-754-60-C	RR-754-60W-C	RR-754-60UR-C				
80	RR-754-80-C	RR-754-80W-C	RR-754-80UR-C				
95	-	-	RR-754-95UR-C				

### 4.00" Dia. x 1.94" Width - Precision/Precision Sealed Bearing

A	B	C	D	E	# Of Bearings	Bearing Type
4.00	1.94	1/2-13x2.75 SHCS	1.41	.25	2	F/G
Durometer	Neoprene Part #	Nitrile Part #	Urethane Part #			
20	RR-754-20-CP	RR-754-20W-CP	-			
35	RR-754-35-CP	RR-754-35W-CP	RR-754-35UR-CP			
60	RR-754-60-CP	RR-754-60W-CP	RR-754-60UR-CP			
80	RR-754-80-CP	RR-754-80W-CP	RR-754-80UR-CP			
95	-	-	RR-754-95UR-CP			

Note - The part numbers above are supplied with precision bearings. Add "C" to the end of the part number for precision sealed bearing.

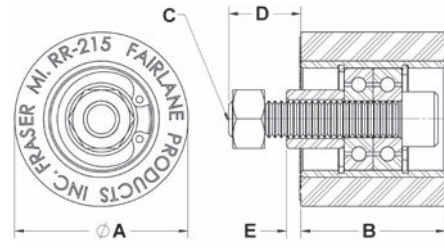
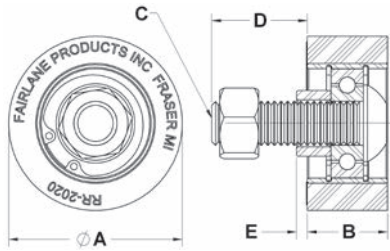
### 5.00" Dia. x 1.94" Width - Standard Bearing

A	B	C	D	E	# Of Bearings	Bearing Type
5.00	1.94	1/2-13x2.75 SHCS	1.41	.25	1	C
Durometer	Urethane Part #					
35	RR-5020-35UR-C					
60	RR-5020-60UR-C					
80	RR-5020-80UR-C					

### 5.00" Dia. x 1.94" Width - Precision/Precision Sealed Bearing

A	B	C	D	E	# Of Bearings	Bearing Type
5.00	1.94	1/2-13x2.75 SHCS	1.41	.25	2	F/G
Durometer	Urethane Part #					
35	RR-5020-35UR-CP					
60	RR-5020-60UR-CP					
80	RR-5020-80UR-CP					

Note - The part numbers above are supplied with precision bearings. Add "C" to the end of the part number for precision sealed bearing.



**6.00" Dia. x 1.94" Width - Standard Bearing**

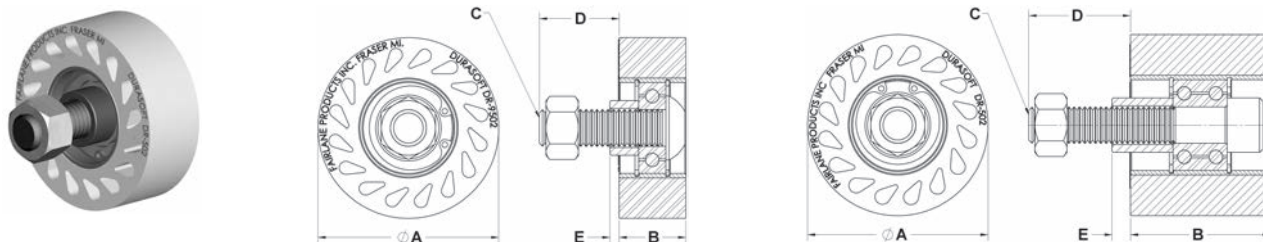
A	B	C	D	E	# Of Bearings	Bearing Type
6.00	1.94	1/2-13x2.75 SHCS	1.41	.25	1	C
<b>Urethane</b>						
<b>Durometer</b>	<b>Part #</b>					
35	RR-6020-35UR-C					
60	RR-6020-60UR-C					
80	RR-6020-80UR-C					

**6.00" Dia. x 1.94" Width - Precision/Precision Sealed Bearing**

A	B	C	D	E	# Of Bearings	Bearing Type
6.00	1.94	1/2-13x2.75 SHCS	1.41	.25	2	F/G
<b>Urethane</b>						
<b>Durometer</b>	<b>Part #</b>					
35	RR-6020-35UR-CP					
60	RR-6020-60UR-CP					
80	RR-6020-80UR-CP					

Note - The part numbers above are supplied with precision bearings. Add "C" to the end of the part number for precision sealed bearing.

Distributed by  
**AJACS**  
1-800-968-6868



DuraSoft rollers have a smooth surface and are permanently bonded to a steel insert with the bearings held in place with snap rings. They come assembled with a socket head cap screw, spacer and locknut for fast easy mounting. They are available with standard bearings, precision bearings and sealed precision bearings based on your application and environment. The "teardrop" holes allow the roller to flex for firm yet non-damaging contact. Rollers are available in neoprene, nitrile and urethane materials with hardness ranging from 20 to 95 durometer. See page 6 for material and durometer specifications. Line drawings shown are not proportional for all parts. View and download part CAD models at [www.fairlaneproducts.com](http://www.fairlaneproducts.com). See pages 4 and 5 for bearing type specifications.

### 2.50" Dia. x .92" Width - Standard Bearing

A	B	C	D	E	# Of Bearings	Bearing Type
2.50	.92	1/2-13x1.75 BHCS	1.10	.12	1	B
Urethane						
Durometer	Part #					
35	DR-9502-35UR-C					
60	DR-9502-60UR-C					
80	DR-9502-80UR-C					
95	DR-9502-95UR-C					

### 2.50" Dia. x .92" Width - Precision/Precision Sealed Bearing

A	B	C	D	E	# Of Bearings	Bearing Type
2.50	.92	1/2-13x1.75 LHCS	1.10	.12	1	F/G
Urethane						
Durometer	Part #					
35	DR-9502-35UR-CP					
60	DR-9502-60UR-CP					
80	DR-9502-80UR-CP					
95	DR-9502-95UR-CP					

Note - The part numbers above are supplied with precision bearings. Add "C" to the end of the part number for precision sealed bearing.

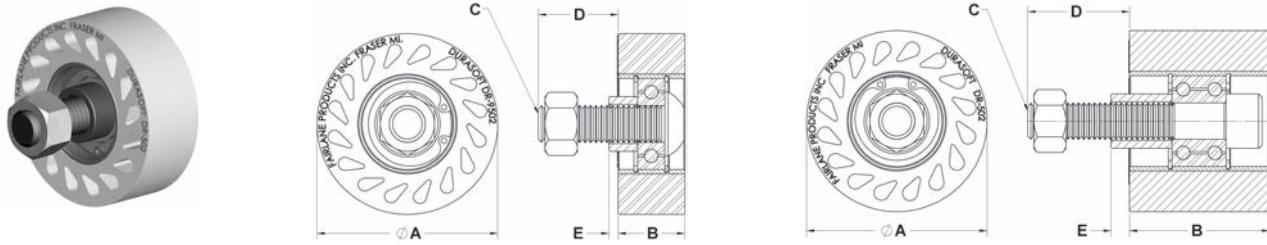
### 2.50" Dia. x 1.94" Width - Standard Bearing

A	B	C	D	E	# Of Bearings	Bearing Type
2.50	1.94	1/2-13x2.75 SHCS	1.41	.25	1	C
Urethane						
Durometer	Part #					
35	DR-502-35UR-C					
60	DR-502-60UR-C					
80	DR-502-80UR-C					
95	DR-502-95UR-C					

### 2.50" Dia. x 1.94" Width - Precision/Precision Sealed Bearing

A	B	C	D	E	# Of Bearings	Bearing Type
2.50	1.94	1/2-13x2.75 SHCS	1.41	.25	2	F/G
Urethane						
Durometer	Part #					
35	DR-502-35UR-CP					
60	DR-502-60UR-CP					
80	DR-502-80UR-CP					
95	DR-502-95UR-CP					

Note - The part numbers above are supplied with precision bearings. Add "C" to the end of the part number for precision sealed bearing.



**4.00" Dia. x .92" Width - Standard Bearing**

A	B	C	D	E	# Of Bearings	Bearing Type
4.00	.92	1/2-13x1.75 BHCS	1.10	.12	1	B
Durometer	Neoprene Part #		Nitrile Part #		Urethane Part #	
20	DR-9754-20-C		DR-9754-20W-C		-	
35	DR-9754-35-C		DR-9754-35W-C		DR-9754-35UR-C	
60	-		-		DR-9754-60UR-C	
80	-		-		DR-9754-80UR-C	
95	-		-		DR-9754-95UR-C	

**4.00" Dia. x .92" Width - Precision/Precision Sealed Bearing**

A	B	C	D	E	# Of Bearings	Bearing Type
4.00	.92	1/2-13x1.75 LHCS	1.10	.12	1	F/G
Durometer	Neoprene Part #		Nitrile Part #		Urethane Part #	
20	DR-9754-20-CP		DR-9754-20W-CP		-	
35	DR-9754-35-CP		DR-9754-35W-CP		DR-9754-35UR-CP	
60	-		-		DR-9754-60UR-CP	
80	-		-		DR-9754-80UR-CP	
95	-		-		DR-9754-95UR-CP	

Note - The part numbers above are supplied with precision bearings. Add "C" to the end of the part number for precision sealed bearing.

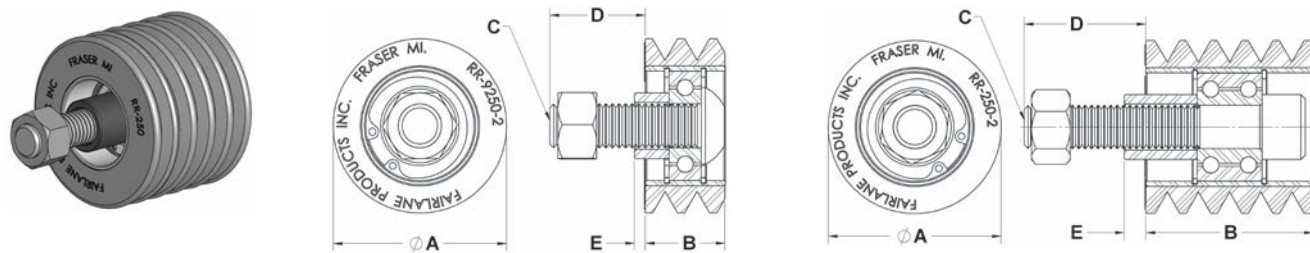
**4.00" Dia. x 1.94" Width - Standard Bearing**

A	B	C	D	E	# Of Bearings	Bearing Type
4.00	1.94	1/2-13x2.75 SHCS	1.41	.25	1	C
Durometer	Neoprene Part #		Nitrile Part #		Urethane Part #	
20	DR-754-20-C		DR-754-20W-C		-	
35	DR-754-35-C		DR-754-35W-C		DR-754-35UR-C	
60	-		-		DR-754-60UR-C	
80	-		-		DR-754-80UR-C	
95	-		-		DR-754-95UR-C	

**4.00" Dia. x 1.94" Width - Precision/Precision Sealed Bearing**

A	B	C	D	E	# Of Bearings	Bearing Type
4.00	1.94	1/2-13x2.75 SHCS	1.41	.25	2	F/G
Durometer	Neoprene Part #		Nitrile Part #		Urethane Part #	
20	DR-754-20-CP		DR-754-20W-CP		-	
35	DR-754-35-CP		DR-754-35W-CP		DR-754-35UR-CP	
60	-		-		DR-754-60UR-CP	
80	-		-		DR-754-80UR-CP	
95	-		-		DR-754-95UR-CP	

Note - The part numbers above are supplied with precision bearings. Add "C" to the end of the part number for precision sealed bearing.



Finned rollers have grooves on the surface and are permanently bonded to a steel insert with the bearings held in place with snap rings. They come assembled with a socket head cap screw, spacer and locknut for fast easy mounting. They are available with standard bearings, precision bearings and sealed precision bearings based on your application and environment. The grooves create less surface contact on the work piece and allow dirt, debris and liquids to pass. Rollers are available in neoprene, nitrile and urethane materials with hardness ranging from 20 to 60 durometer. See page 6 for material and durometer specifications. Line drawings shown are not proportional for all parts. View and download part CAD models at [www.fairlaneproducts.com](http://www.fairlaneproducts.com). See pages 4 and 5 for bearing type specifications.

### 2.00" Dia. x .92" Width - Standard Bearing

A	B	C	D	E	# Of Bearings	Bearing Type	# Of Fins
2.00	.92	1/2-13x1.75 BHCS	1.10	.12	1	B	3
Durometer	Neoprene Part #		Nitrile Part #		Urethane Part #		
20	RR-9250-2-20-C		RR-9250-2-20W-C		-		
35	RR-9250-2-35-C		RR-9250-2-35W-C		RR-9250-2-35UR-C		
60	RR-9250-2-60-C		RR-9250-2-60W-C		RR-9250-2-60UR-C		

### 2.00" Dia. x .92" Width - Precision/Precision Sealed Bearing

A	B	C	D	E	# Of Bearings	Bearing Type	# Of Fins
2.00	.92	1/2-13x1.75 LHCS	1.10	.12	1	F/G	3
Durometer	Neoprene Part #		Nitrile Part #		Urethane Part #		
20	RR-9250-2-20-CP		RR-9250-2-20W-CP		-		
35	RR-9250-2-35-CP		RR-9250-2-35W-CP		RR-9250-2-35UR-CP		
60	RR-9250-2-60-CP		RR-9250-2-60W-CP		RR-9250-2-60UR-CP		

Note - The part numbers above are supplied with precision bearings. Add "C" to the end of the part number for precision sealed bearing.

### 2.00" Dia. x 1.94" Width - Standard Bearing

A	B	C	D	E	# Of Bearings	Bearing Type	# Of Fins
2.00	1.94	1/2-13x2.75 SHCS	1.41	.25	1	C	6
Durometer	Neoprene Part #		Nitrile Part #		Urethane Part #		
20	RR-250-2-20-C		RR-250-2-20W-C		-		
35	RR-250-2-35-C		RR-250-2-35W-C		RR-250-2-35UR-C		
60	RR-250-2-60-C		RR-250-2-60W-C		RR-250-2-60UR-C		

### 2.00" Dia. x 1.94" Width - Precision/Precision Sealed Bearing

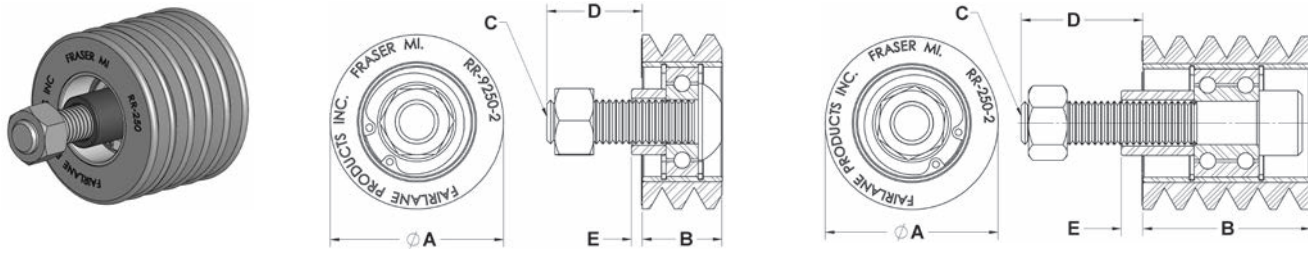
A	B	C	D	E	# Of Bearings	Bearing Type	# Of Fins
2.00	1.94	1/2-13x2.75 SHCS	1.41	.25	2	F/G	6
Durometer	Neoprene Part #		Nitrile Part #		Urethane Part #		
20	RR-250-2-20-CP		RR-250-2-20W-CP		-		
35	RR-250-2-35-CP		RR-250-2-35W-CP		RR-250-2-35UR-CP		
60	RR-250-2-60-CP		RR-250-2-60W-CP		RR-250-2-60UR-CP		

Note - The part numbers above are supplied with precision bearings. Add "C" to the end of the part number for precision sealed bearing.

### 2.50" Dia. x .92" Width - Standard Bearing

A	B	C	D	E	# Of Bearings	Bearing Type	# Of Fins
2.50	.92	1/2-13x1.75 BHCS	1.10	.12	1	B	3
Durometer	Neoprene Part #		Nitrile Part #		Urethane Part #		
20	RR-9250-20-C		RR-9250-20W-C		-		
35	RR-9250-35-C		RR-9250-35W-C		RR-9250-35UR-C		
60	RR-9250-60-C		RR-9250-60W-C		RR-9250-60UR-C		





**2.50" Dia. x .92" Width - Precision/Precision Sealed Bearing**

A	B	C	D	E	# Of Bearings	Bearing Type	# Of Fins
2.50	.92	1/2-13x1.75 LHCS	1.10	.12	1	F/G	3
Durometer	Neoprene Part #	Nitrile Part #	Urethane Part #				
20	RR-9250-20-CP	RR-9250-20W-CP	-				
35	RR-9250-35-CP	RR-9250-35W-CP	RR-9250-35UR-CP				
60	RR-9250-60-CP	RR-9250-60W-CP	RR-9250-60UR-CP				

Note - The part numbers above are supplied with precision bearings. Add "C" to the end of the part number for precision sealed bearing.

**2.50" Dia. x 1.94" Width - Standard Bearing**

A	B	C	D	E	# Of Bearings	Bearing Type	# Of Fins
2.50	1.94	1/2-13x2.75 SHCS	1.41	.25	1	C	6
Durometer	Neoprene Part #	Nitrile Part #	Urethane Part #				
20	RR-250-20-C	RR-250-20W-C	-				
35	RR-250-35-C	RR-250-35W-C	RR-250-35UR-C				
60	RR-250-60-C	RR-250-60W-C	RR-250-60UR-C				

**2.50" Dia. x 1.94" Width - Precision/Precision Sealed Bearing**

A	B	C	D	E	# Of Bearings	Bearing Type	# Of Fins
2.50	1.94	1/2-13x2.75 SHCS	1.41	.25	2	F/G	6
Durometer	Neoprene Part #	Nitrile Part #	Urethane Part #				
20	RR-250-20-CP	RR-250-20W-CP	-				
35	RR-250-35-CP	RR-250-35W-CP	RR-250-35UR-CP				
60	RR-250-60-CP	RR-250-60W-CP	RR-250-60UR-CP				

Note - The part numbers above are supplied with precision bearings. Add "C" to the end of the part number for precision sealed bearing.

**4.00" Dia. x 1.94" Width - Standard Bearing**

A	B	C	D	E	# Of Bearings	Bearing Type	# Of Fins
4.00	1.94	1/2-13x2.75 SHCS	1.41	.25	1	C	8
Durometer	Neoprene Part #	Nitrile Part #	Urethane Part #				
35	RR-667-35-C	RR-667-35W-C	RR-667-35UR-C				
60	RR-667-60-C	RR-667-60W-C	RR-667-60UR-C				

**4.00" Dia. x 1.94" Width - Precision/Precision Sealed Bearing**

A	B	C	D	E	# Of Bearings	Bearing Type	# Of Fins
4.00	1.94	1/2-13x2.75 SHCS	1.41	.25	2	F/G	8
Durometer	Neoprene Part #	Nitrile Part #	Urethane Part #				
35	RR-667-35-CP	RR-667-35W-CP	RR-667-35UR-CP				
60	RR-667-60-CP	RR-667-60W-CP	RR-667-60UR-CP				

Note - The part numbers above are supplied with precision bearings. Add "C" to the end of the part number for precision sealed bearing.



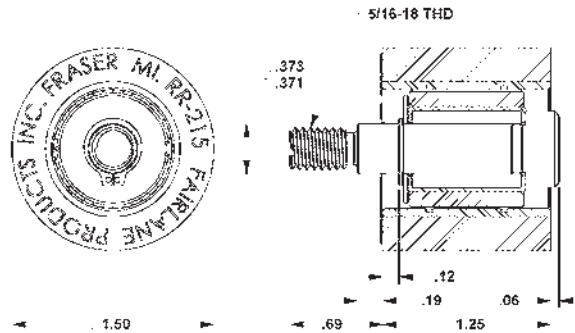


Solid rollers have a smooth surface and are permanently bonded to a steel insert with the bearing pack pressed in place. The clutch bearings allow the roller to only turn in one direction. They come assembled with a threaded stripper bolt and snap ring for fast easy mounting. Rollers are available in neoprene, nitrile and urethane materials with hardness ranging from 20 to 95 durometer. See page 6 for material and durometer specifications. View and download part CAD models at [www.fairlaneproducts.com](http://www.fairlaneproducts.com). All the rollers below have a type I bearing except the 1.50 Dia. x 1.25 Width rollers which are supplied with type H bearings. See pages 4 and 5 for bearing type specifications. Available in either right or left hand rotation. With the stud pointed upward, right hand rotation turns clockwise and left hand rotation turns counter-clockwise.

**1.50" Dia. x 1.25" Width**

Durometer	Neoprene Part #	Nitrile Part #	Urethane Part #
20	BR-215-20-*	BR-215-20W-*	-
35	BR-215-35-*	BR-215-35W-*	BR-215-35UR-*
60	BR-215-60-*	BR-215-60W-*	BR-215-60UR-*
80	BR-215-80-*	BR-215-80W-*	BR-215-80UR-*
95	-	-	BR-215-95UR-*

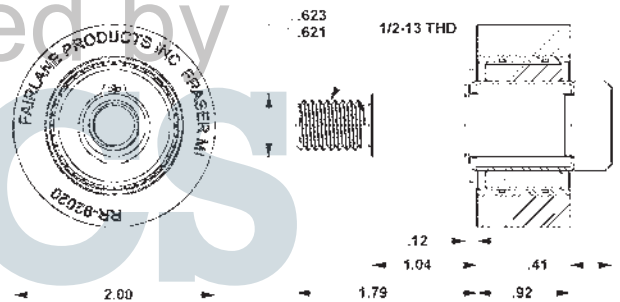
\*Add "R" to the end of the part number for right rolling direction. Add "L" to the end of the part number for left rolling direction. Note: Supplied with type H bearing.



**2.00" Dia. x .92" Width**

Durometer	Neoprene Part #	Nitrile Part #	Urethane Part #
20	BR-92020-20-*	BR-92020-20W-*	-
35	BR-92020-35-*	BR-92020-35W-*	BR-92020-35UR-*
60	BR-92020-60-*	BR-92020-60W-*	BR-92020-60UR-*
80	BR-92020-80-*	BR-92020-80W-*	BR-92020-80UR-*
95	-	-	BR-92020-95UR-*

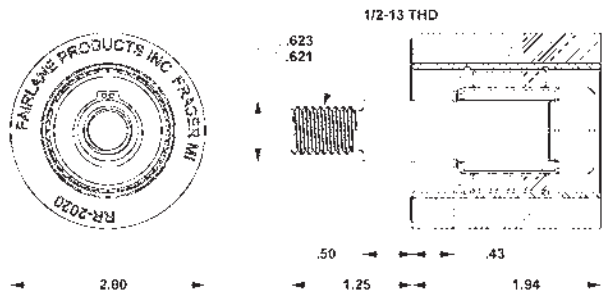
\*Add "R" to the end of the part number for right rolling direction. Add "L" to the end of the part number for left rolling direction.



**2.00" Dia. x 1.94" Width**

Durometer	Neoprene Part #	Nitrile Part #	Urethane Part #
20	BR-2020-20-*	BR-2020-20W-*	-
35	BR-2020-35-*	BR-2020-35W-*	BR-2020-35UR-*
60	BR-2020-60-*	BR-2020-60W-*	BR-2020-60UR-*
80	BR-2020-80-*	BR-2020-80W-*	BR-2020-80UR-*
95	-	-	BR-2020-95UR-*

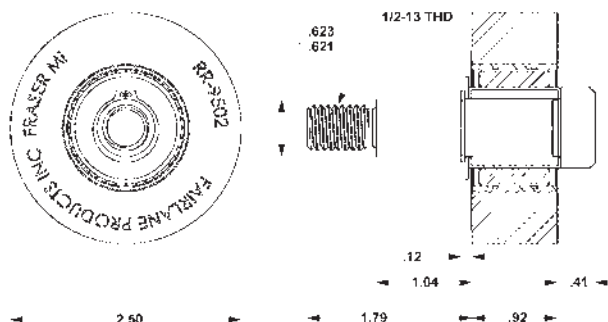
\*Add "R" to the end of the part number for right rolling direction. Add "L" to the end of the part number for left rolling direction.



**2.50" Dia. x .92" Width**

Durometer	Neoprene Part #	Nitrile Part #	Urethane Part #
20	BR-9502-20-*	BR-9502-20W-*	-
35	BR-9502-35-*	BR-9502-35W-*	BR-9502-35UR-*
60	BR-9502-60-*	BR-9502-60W-*	BR-9502-60UR-*
80	BR-9502-80-*	BR-9502-80W-*	BR-9502-80UR-*
95	-	-	BR-9502-95UR-*

\*Add "R" to the end of the part number for right rolling direction. Add "L" to the end of the part number for left rolling direction.

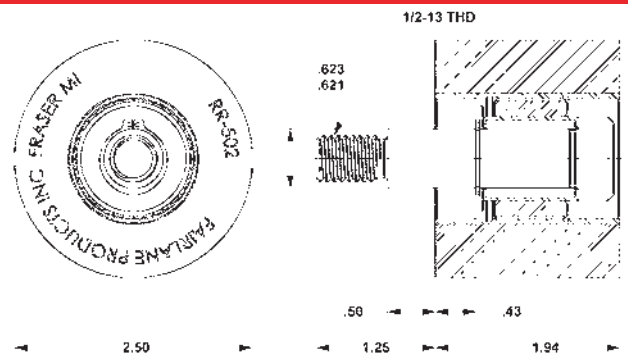




**2.50" Dia. x 1.94" Width**

Durometer	Neoprene Part #	Nitrile Part #	Urethane Part #
20	BR-502-20-*	BR-502-20W-*	-
35	BR-502-35-*	BR-502-35W-*	BR-502-35UR-*
60	BR-502-60-*	BR-502-60W-*	BR-502-60UR-*
80	BR-502-80-*	BR-502-80W-*	BR-502-80UR-*
95	-	-	BR-502-95UR-*

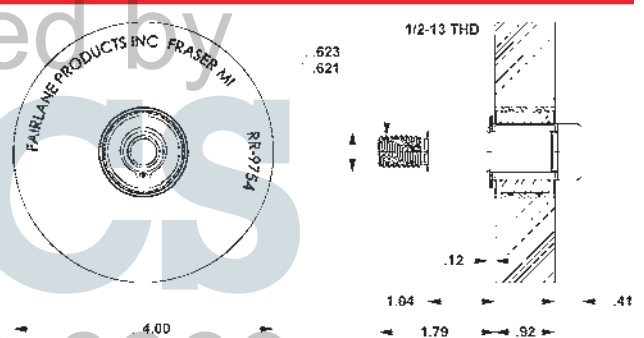
\*Add "R" to the end of the part number for right rolling direction. Add "L" to the end of the part number for left rolling direction.



**4.00" Dia. x .92" Width**

Durometer	Neoprene Part #	Nitrile Part #	Urethane Part #
20	BR-9754-20-*	BR-9754-20W-*	-
35	BR-9754-35-*	BR-9754-35W-*	BR-9754-35UR-*
60	BR-9754-60-*	BR-9754-60W-*	BR-9754-60UR-*
80	BR-9754-80-*	BR-9754-80W-*	BR-9754-80UR-*
95	-	-	BR-9754-95UR-*

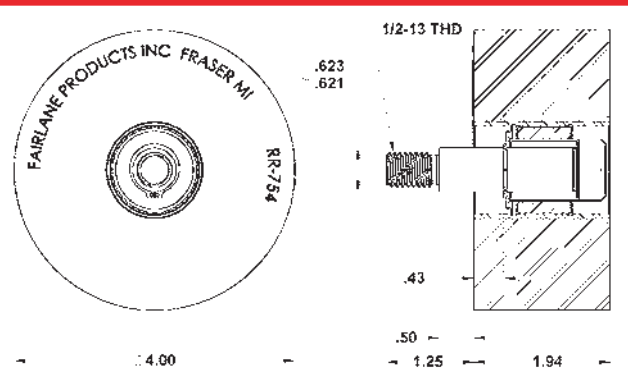
\*Add "R" to the end of the part number for right rolling direction. Add "L" to the end of the part number for left rolling direction.



**4.00" Dia. x 1.94" Width**

Durometer	Neoprene Part #	Nitrile Part #	Urethane Part #
20	BR-754-20-*	BR-754-20W-*	-
35	BR-754-35-*	BR-754-35W-*	BR-754-35UR-*
60	BR-754-60-*	BR-754-60W-*	BR-754-60UR-*
80	BR-754-80-*	BR-754-80W-*	BR-754-80UR-*
95	-	-	BR-754-95UR-*

\*Add "R" to the end of the part number for right rolling direction. Add "L" to the end of the part number for left rolling direction.



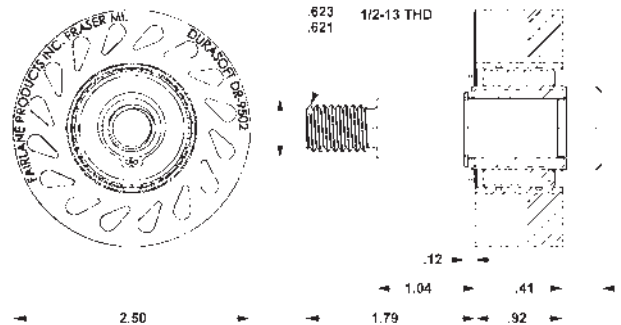


DuraSoft rollers have a smooth surface and are permanently bonded to a steel insert with the bearing pack pressed in place. The clutch bearings allow the roller to only turn in one direction. They come assembled with a threaded stripper bolt and snap ring for fast easy mounting. The "teardrop" holes allow the roller to flex for firm yet non-damaging contact. Rollers are available in neoprene, nitrile and urethane materials with hardness ranging from 20 to 95 durometer. See page 6 for material and durometer specifications. View and download part CAD models at [www.fairlaneproducts.com](http://www.fairlaneproducts.com). All the rollers below have a type I bearing. See pages 4 and 5 for bearing type specifications. Available in either right or left hand rotation. With the stud pointed upward, right hand rotation turns clockwise and left hand rotation turns counter-clockwise.

### 2.50" Dia. x .92" Width

Durometer	Urethane Part #
35	DR-9502-35UR-BR-*
60	DR-9502-60UR-BR-*
80	DR-9502-80UR-BR-*
95	DR-9502-95UR-BR-*

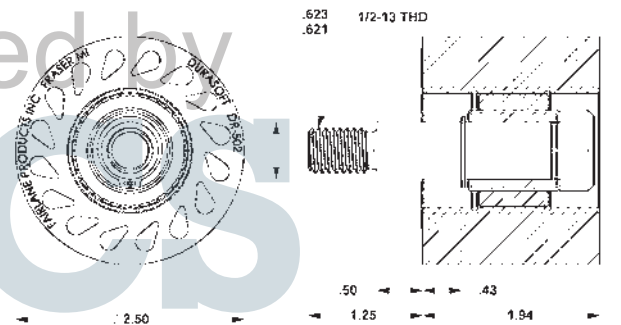
\*Add "R" to the end of the part number for right rolling direction. Add "L" to the end of the part number for left rolling direction.



### 2.50" Dia. x 1.94" Width

Durometer	Urethane Part #
35	DR-502-35UR-BR-*
60	DR-502-60UR-BR-*
80	DR-502-80UR-BR-*
95	DR-502-95UR-BR-*

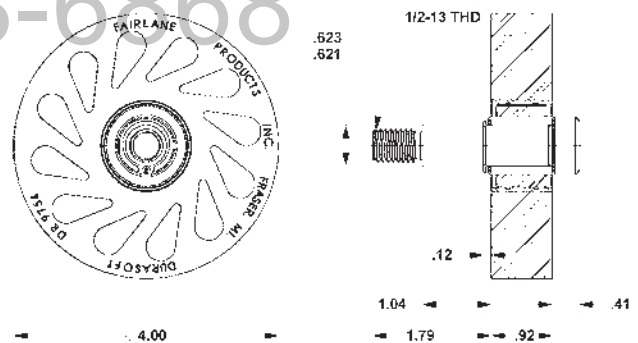
\*Add "R" to the end of the part number for right rolling direction. Add "L" to the end of the part number for left rolling direction.



### 4.00" Dia. x .92" Width

Durometer	Neoprene Part #	Nitrile Part #	Urethane Part #
20	DR-9754-20-BR-*	DR-9754-20W-BR-*	-
35	DR-9754-35-BR-*	DR-9754-35W-BR-*	DR-9754-35UR-BR-*
60	-	-	DR-9754-60UR-BR-*
80	-	-	DR-9754-80UR-BR-*
95	-	-	DR-9754-95UR-BR-*

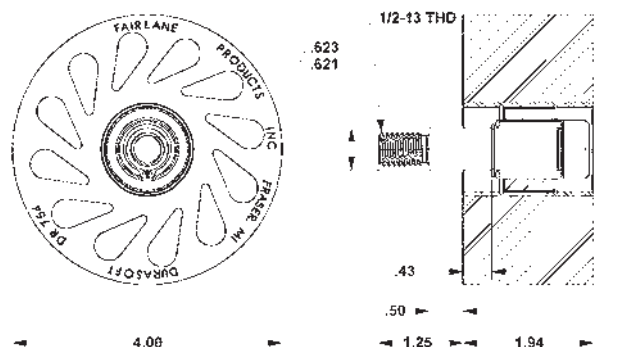
\*Add "R" to the end of the part number for right rolling direction. Add "L" to the end of the part number for left rolling direction.



### 4.00" Dia. x 1.94" Width

Durometer	Neoprene Part #	Nitrile Part #	Urethane Part #
20	DR-754-20-BR-*	DR-754-20W-BR-*	-
35	DR-754-35-BR-*	DR-754-35W-BR-*	DR-754-35UR-BR-*
60	-	-	DR-754-60UR-BR-*
80	-	-	DR-754-80UR-BR-*
95	-	-	DR-754-95UR-BR-*

\*Add "R" to the end of the part number for right rolling direction. Add "L" to the end of the part number for left rolling direction.



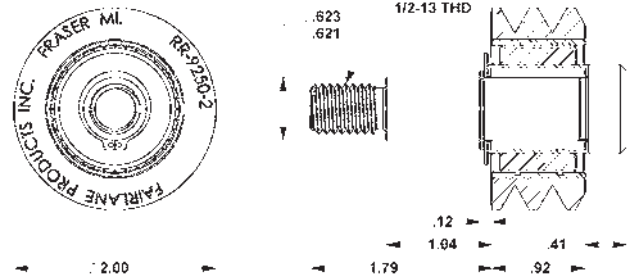


Finned rollers have grooves on the surface and are permanently bonded to a steel insert with the bearing pack pressed in place. The clutch bearings allow the roller to only turn in one direction. They come assembled with a threaded stripper bolt and snap ring for fast easy mounting. The grooves create less surface contact on the work piece and allow dirt, debris and liquids to pass. Rollers are available in neoprene, nitrile and urethane materials with hardness ranging from 20 to 60 durometer. See page 6 for material and durometer specifications. View and download part CAD models at [www.fairlaneproducts.com](http://www.fairlaneproducts.com). All the rollers below have a type I bearing. See pages 4 and 5 for bearing type specifications. Available in either right or left hand rotation. With the stud pointed upward, right hand rotation turns clockwise and left hand rotation turns counter-clockwise.

**2.00" Dia. x .92" Width**

Durometer	Neoprene Part #	Nitrile Part #	Urethane Part #
20	BR-9250-2-20-*	BR-9250-2-20W-*	-
35	BR-9250-2-35-*	BR-9250-2-35W-*	BR-9250-2-35UR-*
60	BR-9250-2-60-*	BR-9250-2-60W-*	BR-9250-2-60UR-*

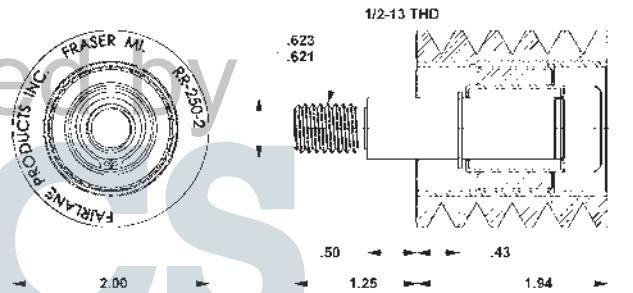
\*Add "R" to the end of the part number for right rolling direction. Add "L" to the end of the part number for left rolling direction.



**2.00" Dia. x 1.94" Width**

Durometer	Neoprene Part #	Nitrile Part #	Urethane Part #
20	BR-250-2-20-*	BR-250-2-20W-*	-
35	BR-250-2-35-*	BR-250-2-35W-*	BR-250-2-35UR-*
60	BR-250-2-60-*	BR-250-2-60W-*	BR-250-2-60UR-*

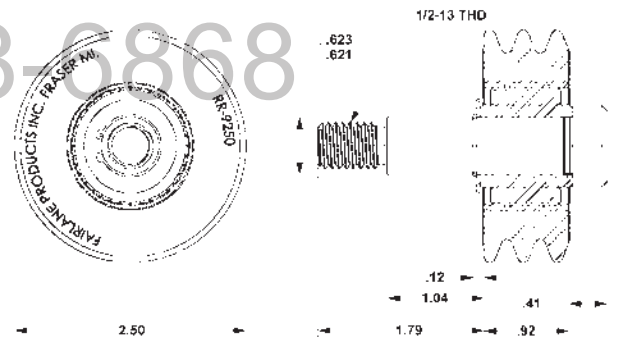
\*Add "R" to the end of the part number for right rolling direction. Add "L" to the end of the part number for left rolling direction.



**2.50" Dia. x .92" Width**

Durometer	Neoprene Part #	Nitrile Part #	Urethane Part #
20	BR-9250-20-*	BR-9250-20W-*	-
35	BR-9250-35-*	BR-9250-35W-*	BR-9250-35UR-*
60	BR-9250-60-*	BR-9250-60W-*	BR-9250-60UR-*

\*Add "R" to the end of the part number for right rolling direction. Add "L" to the end of the part number for left rolling direction.

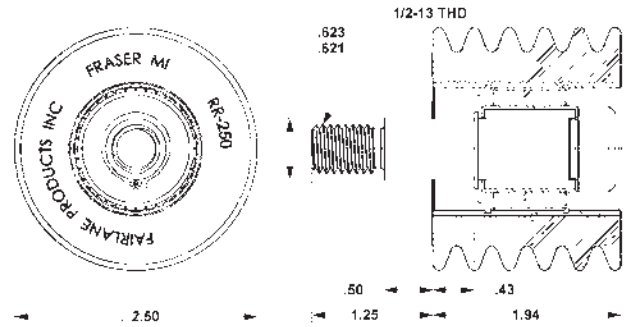




**2.50" Dia. x 1.94" Width**

Durometer	Neoprene Part #	Nitrile Part #	Urethane Part #
20	BR-250-20-*	BR-250-20W-*	-
35	BR-250-35-*	BR-250-35W-*	BR-250-35UR-*
60	BR-250-60-*	BR-250-60W-*	BR-250-60UR-*

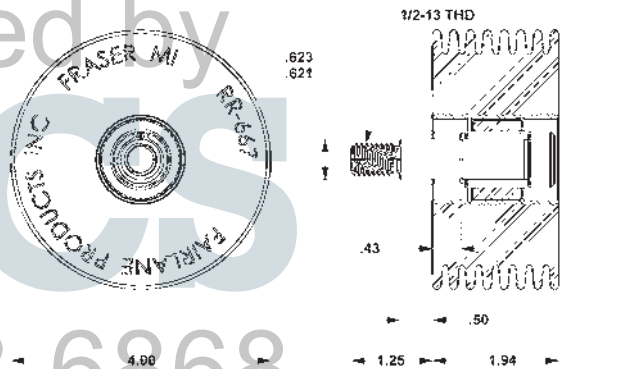
\*Add "R" to the end of the part number for right rolling direction. Add "L" to the end of the part number for left rolling direction.



**4.00" Dia. x 1.94" Width**

Durometer	Neoprene Part #	Nitrile Part #	Urethane Part #
35	BR-667-35-*	BR-667-35W-*	BR-667-35UR-*
60	BR-667-60-*	BR-667-60W-*	BR-667-60UR-*

\*Add "R" to the end of the part number for right rolling direction. Add "L" to the end of the part number for left rolling direction.



Distributed by  
**AJAOS**  
 1-800-968-6868

**Inch - Female Thread - Hex Shoulder - Steel Core - 3/4" Diameter**



Used for stops, guides, bumpers and protection. Molded bumper bonded to steel core for durability. Urethane offers highest resistance, strength and load bearing. High elongation hardness. Resistant to ozone and oxygen. See page 6 for material and durometer specifications. View and download part CAD models at [www.fairlaneproducts.com](http://www.fairlaneproducts.com).

Part #	A Dia	B Length	C	D	Durometer	Thread	Thread Depth	Hex	Material
RBH-516-024UR	3/4	13/16	9/16	3/16	80	#10-24	7/16	1/2	Urethane
RBH-516-032UR	3/4	13/16	9/16	3/16	80	#10-32	7/16	1/2	Urethane
RBH-516-120UR	3/4	13/16	9/16	3/16	80	1/4-20	7/16	1/2	Urethane
RBH-516-128UR	3/4	13/16	9/16	3/16	80	1/4-28	7/16	1/2	Urethane
RBH-516-518UR	3/4	13/16	9/16	3/16	80	5/16-18	7/16	1/2	Urethane
RBH-516-524UR	3/4	13/16	9/16	3/16	80	5/16-24	7/16	1/2	Urethane

**Inch - Female Thread - Flush Mount - Steel Core - 3/4" Diameter**



Used for stops, guides, bumpers and protection. Molded bumper bonded to steel core for durability. Neoprene offers good resistance against weather, gasoline, oil, ozone and high temperature. Urethane offers highest resistance, strength and load bearing. High elongation hardness and is resistant to ozone and oxygen. Nitrile is chemical resistant and non-marring. See page 6 for material and durometer specifications. View and download part CAD models at [www.fairlaneproducts.com](http://www.fairlaneproducts.com).

Part #	A Dia	B Length	C	Durometer	Thread	Thread Depth	Material
RB-516-024	3/4	5/8	3/8	70	#10-24	1/4	Neoprene
RB-516-032	3/4	5/8	3/8	70	#10-32	1/4	Neoprene
RB-516-120	3/4	5/8	3/8	70	1/4-20	1/4	Neoprene
RB-516-128	3/4	5/8	3/8	70	1/4-28	1/4	Neoprene
RB-516-518	3/4	5/8	3/8	70	5/16-18	1/4	Neoprene
RB-516-524	3/4	5/8	3/8	70	5/16-24	1/4	Neoprene
RB-516-45	3/4	5/8	3/8	45	5/16-18	1/4	Neoprene
RB-516-024UR	3/4	5/8	3/8	80	#10-24	1/4	Urethane
RB-516-032UR	3/4	5/8	3/8	80	#10-32	1/4	Urethane
RB-516-120UR	3/4	5/8	3/8	80	1/4-20	1/4	Urethane
RB-516-128UR	3/4	5/8	3/8	80	1/4-28	1/4	Urethane
RB-516-518UR	3/4	5/8	3/8	80	5/16-18	1/4	Urethane
RB-516-524UR	3/4	5/8	3/8	80	5/16-24	1/4	Urethane
RB-516-60UR	3/4	5/8	3/8	60	5/16-18	1/4	Urethane
RB-516-70W	3/4	5/8	3/8	70	5/16-18	1/4	Nitrile



## Inch - Female Thread - Flush Mount - Steel Core - 1-1/4" to 2-1/4" Diameter



Used for stops, guides, bumpers and protection. Molded bumper bonded to steel core for durability. Neoprene offers good resistance against weather, gasoline, oil, ozone and high temperature. Urethane offers highest resistance, strength and load bearing. High elongation hardness and is resistant to ozone and oxygen. Nitrile is chemical resistant and non-marring. See page 6 for material and durometer specifications. View and download part CAD models at [www.fairlaneproducts.com](http://www.fairlaneproducts.com).

Part #	A Dia	B Length	C	Durometer	Thread	Thread Depth	Material
RB-3	1-1/4	1-1/4	3/4	40	3/8-16	1/2	Neoprene
RB-4	1-1/4	1-1/4	3/4	40	3/8-24	1/2	Neoprene
RB-5	1-1/4	1-1/4	3/4	40	1/2-13	1/2	Neoprene
RB-6	1-1/4	1-1/4	3/4	40	1/2-20	1/2	Neoprene
RB-7	1-1/4	1-1/4	3/4	40	7/16-20	1/2	Neoprene
RB-8	1-1/4	1-1/4	3/4	40	5/8-18	1/2	Neoprene
RB-9	1-3/4	1-5/8	7/8	40	5/8-11	5/8	Neoprene
RB-10	1-3/4	1-5/8	7/8	40	5/8-18	5/8	Neoprene
RB-12	2-1/4	2-1/4	1-3/8	40	3/4-10	1"	Neoprene
RB-13	2-1/4	2-1/4	1-3/8	40	3/4-16	1"	Neoprene
RB-14	2-1/4	2-1/4	1-3/8	40	1"-8	1"	Neoprene
RB-3W	1-1/4	1-1/4	3/4	40	3/8-16	1/2	Nitrile
RB-4W	1-1/4	1-1/4	3/4	40	3/8-24	1/2	Nitrile
RB-5W	1-1/4	1-1/4	3/4	40	1/2-13	1/2	Nitrile
RB-6W	1-1/4	1-1/4	3/4	40	1/2-20	1/2	Nitrile
RB-7W	1-1/4	1-1/4	3/4	40	7/16-20	1/2	Nitrile
RB-8W	1-1/4	1-1/4	3/4	40	5/8-18	1/2	Nitrile
RB-9W	1-3/4	1-5/8	7/8	40	5/8-11	5/8	Nitrile
RB-10W	1-3/4	1-5/8	7/8	40	5/8-18	5/8	Nitrile
RB-12W	2-1/4	2-1/4	1-3/8	40	3/4-10	1"	Nitrile
RB-13W	2-1/4	2-1/4	1-3/8	40	3/4-16	1"	Nitrile
RB-14W	2-1/4	2-1/4	1-3/8	40	1"-8	1"	Nitrile
RB-3-60UR	1-1/4	1-1/4	3/4	60	3/8-16	1/2	Urethane
RB-3UR	1-1/4	1-1/4	3/4	80	3/8-16	1/2	Urethane
RB-4-60UR	1-1/4	1-1/4	3/4	60	3/8-24	1/2	Urethane
RB-4UR	1-1/4	1-1/4	3/4	80	3/8-24	1/2	Urethane
RB-5-60UR	1-1/4	1-1/4	3/4	60	1/2-13	1/2	Urethane
RB-5UR	1-1/4	1-1/4	3/4	80	1/2-13	1/2	Urethane
RB-6-60UR	1-1/4	1-1/4	3/4	60	1/2-20	1/2	Urethane
RB-6UR	1-1/4	1-1/4	3/4	80	1/2-20	1/2	Urethane
RB-7-60UR	1-1/4	1-1/4	3/4	60	7/16-20	1/2	Urethane
RB-7UR	1-1/4	1-1/4	3/4	80	7/16-20	1/2	Urethane
RB-8-60UR	1-1/4	1-1/4	3/4	60	5/8-18	1/2	Urethane
RB-8UR	1-1/4	1-1/4	3/4	80	5/8-18	1/2	Urethane
RB-9-60UR	1-3/4	1-5/8	7/8	60	5/8-11	5/8	Urethane
RB-9UR	1-3/4	1-5/8	7/8	80	5/8-11	5/8	Urethane
RB-10-60UR	1-3/4	1-5/8	7/8	60	5/8-18	5/8	Urethane
RB-10UR	1-3/4	1-5/8	7/8	80	5/8-18	5/8	Urethane
RB-12-60UR	2-1/4	2-1/4	1-3/8	60	3/4-10	1"	Urethane
RB-12UR	2-1/4	2-1/4	1-3/8	80	3/4-10	1"	Urethane
RB-13-60UR	2-1/4	2-1/4	1-3/8	60	3/4-16	1"	Urethane
RB-13UR	2-1/4	2-1/4	1-3/8	80	3/4-16	1"	Urethane
RB-14-60UR	2-1/4	2-1/4	1-3/8	60	1"-8	1"	Urethane
RB-14UR	2-1/4	2-1/4	1-3/8	80	1"-8	1"	Urethane



**Metric - Female Thread - Flush Mount - Steel Core - 19mm to 57mm Diameter**

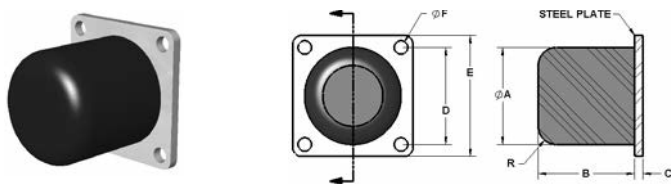


Used for stops, guides, bumpers and protection. Molded bumper bonded to steel core for durability. Neoprene offers good resistance against weather, gasoline, oil, ozone and high temperature. Urethane offers highest resistance, strength and load bearing. High elongation hardness. Resistant to ozone and oxygen. See page 6 for material and durometer specifications. View and download part CAD models at [www.fairlaneproducts.com](http://www.fairlaneproducts.com).

Part #	A Dia	B Length	C	Durometer	Thread	Thread Depth	Material
MRB-5166	19	16	9.0	70	M6X1.0	6	Neoprene
MRB-5168	19	16	9.0	70	M8X1.25	6	Neoprene
MRB-3	32	32	19.0	40	M10X1.5	13	Neoprene
MRB-4	32	32	19.0	40	M10X1.25	13	Neoprene
MRB-5	32	32	19.0	40	M12X1.75	13	Neoprene
MRB-6	32	32	19.0	40	M12X1.25	13	Neoprene
MRB-8	32	32	19.0	40	M16X2.0	13	Neoprene
MRB-9	45	42	22.5	40	M16X2.0	16	Neoprene
MRB-12	57	57	35.0	40	M20X2.5	25	Neoprene
MRB-14	57	57	35.0	40	M24X3.0	25	Neoprene
MRB-5166-80UR	19	16	9.0	80	M6X1.0	6	Urethane
MRB-5168-80UR	19	16	9.0	80	M8X1.25	6	Urethane
MRB-3UR	32	32	19.0	80	M10X1.5	13	Urethane
MRB-4UR	32	32	19.0	80	M10X1.25	13	Urethane
MRB-5UR	32	32	19.0	80	M12X1.75	13	Urethane
MRB-6UR	32	32	19.0	80	M12X1.25	13	Urethane
MRB-8UR	32	32	19.0	80	M16X2.0	13	Urethane
MRB-9UR	45	42	22.5	80	M16X2.0	16	Urethane
MRB-12UR	57	57	35.0	80	M20X2.5	25	Urethane
MRB-14UR	57	57	35.0	80	M24X3.0	25	Urethane

1-800-968-6868

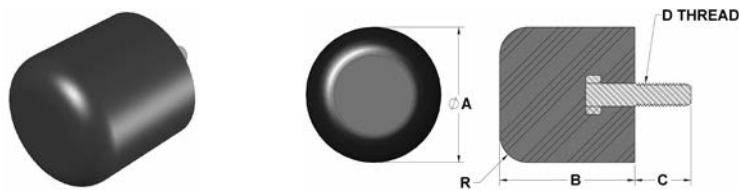
**Inch - Steel Plate Mount - 2" to 4" Diameter**



Used for stops, guides, bumpers and protection. Molded urethane bonded to steel plate. Urethane offers highest resistance, strength and load bearing. High elongation hardness and resistant to ozone and oxygen. See page 6 for material and durometer specifications. View and download part CAD models at [www.fairlaneproducts.com](http://www.fairlaneproducts.com).

Part #	A Dia	B Length	C	D	Durometer	E	F	R	Material
RB-2020-P-60UR	2	2	3/16	2	60	2-1/2	9/32	3/8	Urethane
RB-2525-P-60UR	2-1/2	2-1/2	3/16	2-1/2	60	3-1/4	9/32	1/2	Urethane
RB-3030-P-60UR	3	3	1/4	3	60	4	13/32	5/8	Urethane
RB-4040-P-60UR	4	4	1/4	4	60	5	13/32	3/4	Urethane
RB-2020-P-80UR	2	2	3/16	2	80	2-1/2	9/32	3/8	Urethane
RB-2525-P-80UR	2-1/2	2-1/2	3/16	2-1/2	80	3-1/4	9/32	1/2	Urethane
RB-3030-P-80UR	3	3	1/4	3	80	4	13/32	5/8	Urethane
RB-4040-P-80UR	4	4	1/4	4	80	5	13/32	3/4	Urethane

### Inch - Male Thread - Flush Mount - 1" to 4" Diameter



Used for stops, guides, bumpers and protection. Molded bumper bonded to steel stud. Urethane offers highest resistance, strength and load bearing. High elongation hardness and is resistant to ozone and oxygen. See page 6 for material and durometer specifications. View and download part CAD models at [www.fairlaneproducts.com](http://www.fairlaneproducts.com).

Part #	A Dia	B Length	C Thread Length	D Thread	R	Durometer	Material
RB-1010-M14-60UR	1	1	7/8	5/16-18	1/4	60	Urethane
RB-1010-M14-80UR	1	1	7/8	5/16-18	1/4	80	Urethane
RB-1515-M14-60UR	1-1/2	1-1/2	7/8	5/16-18	5/16	60	Urethane
RB-1515-M14-80UR	1-1/2	1-1/2	7/8	5/16-18	5/16	80	Urethane
RB-2020-M14-60UR	2	2	7/8	5/16-18	3/8	60	Urethane
RB-2020-M14-80UR	2	2	7/8	5/16-18	3/8	80	Urethane
RB-2525-M14-60UR	2-1/2	2-1/2	7/8	3/8-16	1/2	60	Urethane
RB-2525-M14-80UR	2-1/2	2-1/2	7/8	3/8-16	1/2	80	Urethane
RB-3030-M20-60UR	3	3	1-1/4	1/2-13	5/8	60	Urethane
RB-3030-M20-80UR	3	3	1-1/4	1/2-13	5/8	80	Urethane
RB-4040-M21-60UR	4	4	1-5/16	1/2-13	3/4	60	Urethane
RB-4040-M21-80UR	4	4	1-5/16	1/2-13	3/4	80	Urethane

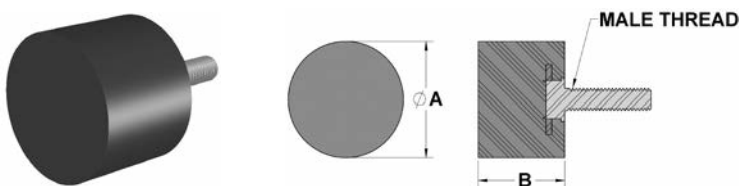
### Inch - Male Thread - Low Profile - Flush Mount - 1-1/2" Diameter



Used for stops, guides, bumpers and protection. Molded bumper bonded to steel stud. Neoprene offers good resistance against weather, gasoline, oil, ozone and high temperature. Urethane offers highest resistance, strength and load bearing. High elongation hardness and is resistant to ozone and oxygen. See page 6 for material and durometer specifications. View and download part CAD models at [www.fairlaneproducts.com](http://www.fairlaneproducts.com).

Part #	A Dia	B Length	Durometer	Thread	Thread Length	Material
RB-15M-12	1-1/2	13/16	40	3/8-16	3/4	Neoprene
RB-15URM-12	1-1/2	13/16	80	3/8-16	3/4	Urethane

### Inch - Male Thread - Flat Top - Flush Mount - 2" Diameter



Used for stops, guides, bumpers and protection. Molded bumper bonded to steel stud. Neoprene offers good resistance against weather, gasoline, oil, ozone and high temperature. See page 6 for material and durometer specifications. View and download part CAD models at [www.fairlaneproducts.com](http://www.fairlaneproducts.com).

Part #	A Dia	B Length	Durometer	Thread	Stud Length	Thread Length	Material
RB-2015M-8	2	1-1/2	60	3/8-16	1/2	1/2	Neoprene
RB-2015M-24	2	1-1/2	60	3/8-16	1-1/2	1	Neoprene

**Inch - Male Thread - Hex Shoulder - Steel Core - 3/4" Diameter**



Used for stops, guides, bumpers and protection. Molded bumper bonded to steel core for durability. Neoprene offers good resistance against weather, gasoline, oil, ozone and high temperature. Urethane offers highest resistance, strength and load bearing. High elongation hardness and is resistant to ozone and oxygen. Nitrile is chemical resistant and non-marring. See page 6 for material and durometer specifications. View and download part CAD models at [www.fairlaneproducts.com](http://www.fairlaneproducts.com).

Part #	A Dia	B Length	C	Durometer	Hex	Thread	Thread Length	Material
RB-516-024M-8	3/4	5/8	3/8	70	1/2	#10-24	1/2	Neoprene
RB-516-024M-20	3/4	5/8	3/8	70	1/2	#10-24	1-1/4	Neoprene
RB-516-032M-8	3/4	5/8	3/8	70	1/2	#10-32	1/2	Neoprene
RB-516-032M-20	3/4	5/8	3/8	70	1/2	#10-32	1-1/4	Neoprene
RB-516-120M-8	3/4	5/8	3/8	70	1/2	1/4-20	1/2	Neoprene
RB-516-120M-20	3/4	5/8	3/8	70	1/2	1/4-20	1-1/4	Neoprene
RB-516-128M-8	3/4	5/8	3/8	70	1/2	1/4-28	1/2	Neoprene
RB-516-128M-20	3/4	5/8	3/8	70	1/2	1/4-28	1-1/4	Neoprene
RB-516-524M-8	3/4	5/8	3/8	70	1/2	5/16-24	1/2	Neoprene
RB-516-524M-20	3/4	5/8	3/8	70	1/2	5/16-24	1-1/4	Neoprene
RB-516-M-8	3/4	5/8	3/8	70	1/2	5/16-18	1/2	Neoprene
RB-516-M-20	3/4	5/8	3/8	70	1/2	5/16-18	1-1/4	Neoprene
RB-516-024URM-8	3/4	5/8	3/8	80	1/2	#10-24	1/2	Urethane
RB-516-024URM-20	3/4	5/8	3/8	80	1/2	#10-24	1-1/4	Urethane
RB-516-032URM-8	3/4	5/8	3/8	80	1/2	#10-32	1/2	Urethane
RB-516-032URM-20	3/4	5/8	3/8	80	1/2	#10-32	1-1/4	Urethane
RB-516-120URM-8	3/4	5/8	3/8	80	1/2	1/4-20	1/2	Urethane
RB-516-120URM-20	3/4	5/8	3/8	80	1/2	1/4-20	1-1/4	Urethane
RB-516-128URM-8	3/4	5/8	3/8	80	1/2	1/4-28	1/2	Urethane
RB-516-128URM-20	3/4	5/8	3/8	80	1/2	1/4-28	1-1/4	Urethane
RB-516-524URM-8	3/4	5/8	3/8	80	1/2	5/16-24	1/2	Urethane
RB-516-524URM-20	3/4	5/8	3/8	80	1/2	5/16-24	1-1/4	Urethane
RB-516-URM-8	3/4	5/8	3/8	80	1/2	5/16-18	1/2	Urethane
RB-516-URM-20	3/4	5/8	3/8	80	1/2	5/16-18	1-1/4	Urethane
RB-516-WM-8	3/4	5/8	3/8	70	1/2	5/16-18	1/2	Nitrile
RB-516-WM-20	3/4	5/8	3/8	70	1/2	5/16-18	1-1/4	Nitrile

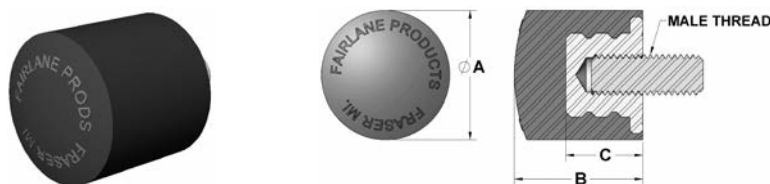
**Metric - Male Thread - Hex Shoulder - Steel Core - 19mm Diameter**



Used for stops, guides, bumpers and protection. Molded bumper bonded to steel core with hex shoulder. Neoprene offers good resistance against weather, gasoline, oil, ozone and high temperature. Urethane offers highest resistance, strength and load bearing. High elongation hardness. Resistant to ozone and oxygen. See page 6 for material and durometer specifications. View and download part CAD models at [www.fairlaneproducts.com](http://www.fairlaneproducts.com).

Part #	A Dia	B Length	C	D	Durometer	Thread	Thread Length	Material
MRB-5166X15	19	16	9	3.2	70	M6X1.0	15	Neoprene
MRB-5166X30	19	16	9	3.2	70	M6X1.0	30	Neoprene
MRB-5168X15	19	16	9	4.0	70	M8X1.25	15	Neoprene
MRB-5168X30	19	16	9	4.0	70	M8X1.25	30	Neoprene
MRB-5166URX15	19	16	9	3.2	80	M6X1.0	15	Urethane
MRB-5166URX30	19	16	9	3.2	80	M6X1.0	30	Urethane
MRB-5168URX15	19	16	9	4.0	80	M8X1.25	15	Urethane
MRB-5168URX30	19	16	9	4.0	80	M8X1.25	30	Urethane

## Inch - Male Thread - Flush Mount - Steel Core - 1-1/4" Diameter



Used for stops, guides, bumpers and protection. Molded bumper bonded to steel core for durability. Neoprene offers good resistance against weather, gasoline, oil, ozone and high temperature. Urethane offers highest resistance, strength and load bearing. High elongation hardness and is resistant to ozone and oxygen. Nitrile is chemical resistant and non-marring. See page 6 for material and durometer specifications. View and download part CAD models at [www.fairlaneproducts.com](http://www.fairlaneproducts.com).

Part #	A Dia	B Length	C	Durometer	Thread	Thread Length	Material
RB-3M-10	1-1/4	1-1/4	3/4	40	3/8-16	5/8	Neoprene
RB-3M-16	1-1/4	1-1/4	3/4	40	3/8-16	1"	Neoprene
RB-3M-20	1-1/4	1-1/4	3/4	40	3/8-16	1-1/4	Neoprene
RB-8M-16	1-1/4	1-1/4	3/4	40	5/8-18	1"	Neoprene
RB-14M-13	1-1/4	1-1/4	3/4	40	1/2-13	3/4	Neoprene
RB-3WM-10	1-1/4	1-1/4	3/4	40	3/8-16	5/8	Nitrile
RB-3WM-16	1-1/4	1-1/4	3/4	40	3/8-16	1"	Nitrile
RB-3WM-20	1-1/4	1-1/4	3/4	40	3/8-16	1-1/4	Nitrile
RB-8WM-16	1-1/4	1-1/4	3/4	40	5/8-18	1"	Nitrile
RB-14WM-13	1-1/4	1-1/4	3/4	40	1/2-13	3/4	Nitrile
RB-3URM-10	1-1/4	1-1/4	3/4	80	3/8-16	5/8	Urethane
RB-3URM-16	1-1/4	1-1/4	3/4	80	3/8-16	1"	Urethane
RB-3URM-20	1-1/4	1-1/4	3/4	80	3/8-16	1-1/4	Urethane
RB-8URM-16	1-1/4	1-1/4	3/4	80	5/8-18	1"	Urethane
RB-14URM-13	1-1/4	1-1/4	3/4	80	1/2-13	3/4	Urethane

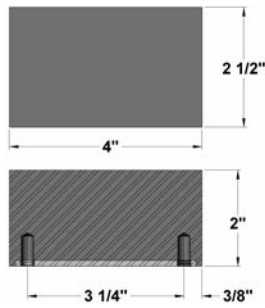
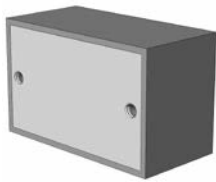
## Metric - Male Thread - Flush Mount - Steel Core - 32mm to 45mm Diameter



Used for stops, guides, bumpers and protection. Molded bumper bonded to steel core for durability. Neoprene offers good resistance against weather, gasoline, oil, ozone and high temperature. Urethane offers highest resistance, strength and load bearing. High elongation hardness. Resistant to ozone and oxygen. See page 6 for material and durometer specifications. View and download part CAD models at [www.fairlaneproducts.com](http://www.fairlaneproducts.com).

Part #	A Dia	B Length	C	Durometer	Thread	Thread Length	Material
MRB-3X15	32	32	19.0	40	M10X1.5	15	Neoprene
MRB-3X30	32	32	19.0	40	M10X1.5	30	Neoprene
MRB-5X15	32	32	19.0	40	M12X1.75	15	Neoprene
MRB-5X30	32	32	19.0	40	M12X1.75	30	Neoprene
MRB-8X15	32	32	19.0	40	M16X2.0	15	Neoprene
MRB-8X30	32	32	19.0	40	M16X2.0	30	Neoprene
MRB-9X15	45	42	22.5	40	M16X2.0	15	Neoprene
MRB-9X30	45	42	22.5	40	M16X2.0	30	Neoprene
MRB-3URX15	32	32	19.0	80	M10X1.5	15	Urethane
MRB-3URX30	32	32	19.0	80	M10X1.5	30	Urethane
MRB-5URX15	32	32	19.0	80	M12X1.75	15	Urethane
MRB-5URX30	32	32	19.0	80	M12X1.75	30	Urethane
MRB-8URX15	32	32	19.0	80	M16X2.0	15	Urethane
MRB-8URX30	32	32	19.0	80	M16X2.0	30	Urethane
MRB-9URX15	45	42	22.5	80	M16X2.0	15	Urethane
MRB-9URX30	45	42	22.5	80	M16X2.0	30	Urethane

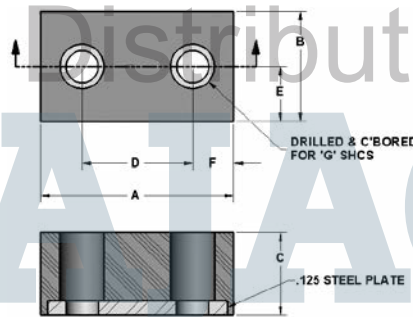
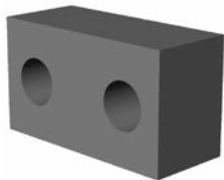
**Tapped Steel Plate - Backside Mounting - 4" Wide**



Used for stops, guides, bumpers and protection. 1/8" steel plate has two holes for backside mounting. Neoprene offers good resistance against weather, gasoline, ozone and temperature. See page 6 for material and durometer specifications. View and download part CAD models at [www.fairlaneproducts.com](http://www.fairlaneproducts.com).

Part #	Tap	Durometer	Material
RB-2540-T	5/16-18	80	Neoprene

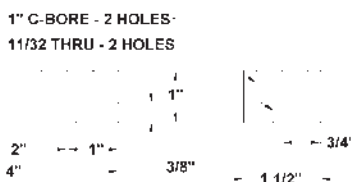
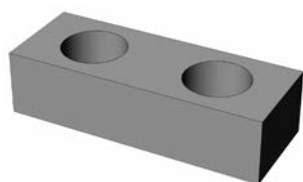
**Counter Bored - Steel Plate - 1-3/4" to 2-1/2"**



Used for stops, guides, bumpers and protection. Molded bumper bonded to steel plate. Neoprene offers good resistance against weather, gasoline, oil, ozone and high temperature. Urethane offers highest resistance, strength and load bearing. High elongation hardness. Resistant to ozone and oxygen. See page 6 for material and durometer specifications. View and download part CAD models at [www.fairlaneproducts.com](http://www.fairlaneproducts.com).

Part #	A	B	C	D	E	F	G For SHCS	Durometer	Material
RB-7525	2-1/2	5/8	5/8	1-1/2	5/16	1/2	1/4 (6MM)	80	Neoprene
RB-1175	1-3/4	1	3/4	1	1/2	3/8	1/4 (6MM)	80	Neoprene
RB-1175-35	1-3/4	1	3/4	1	1/2	3/8	1/4 (6MM)	35	Neoprene
RB-2025-C	2-1/2	2	2	1-1/2	1	1/2	5/16	80	Neoprene
RB-7525-UR	2-1/2	5/8	5/8	1-1/2	5/16	1/2	1/4 (6MM)	80	Urethane
RB-1137-UR	1-3/4	1	3/8	1	1/2	3/8	1/4 (6MM)	80	Urethane
RB-1150-UR	1-3/4	1	1/2	1	1/2	3/8	1/4 (6MM)	80	Urethane
RB-1175-UR	1-3/4	1	3/4	1	1/2	3/8	1/4 (6MM)	80	Urethane
RB-2025-C-UR	2-1/2	2	2	1-1/2	1	1/2	5/16	80	Urethane
RB-7525-60UR	2-1/2	5/8	5/8	1-1/2	5/16	1/2	1/4 (6MM)	60	Urethane
RB-1137-60UR	1-3/4	1	3/8	1	1/2	3/8	1/4 (6MM)	60	Urethane
RB-1150-60UR	1-3/4	1	1/2	1	1/2	3/8	1/4 (6MM)	60	Urethane
RB-1175-60UR	1-3/4	1	3/4	1	1/2	3/8	1/4 (6MM)	60	Urethane

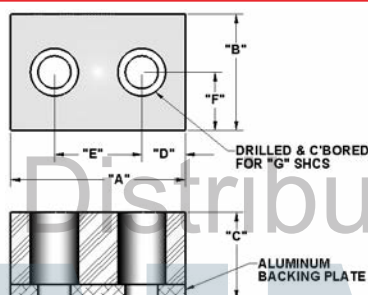
### Counter Bored - Without Plate - 4" Wide



Used for stops, guides, bumpers and protection. They do not have a plate backing so there is no metal to rust or corrode. Neoprene offers good resistance against weather, gasoline, ozone and temperature. See page 6 for material and durometer specifications. View and download part CAD models at [www.fairlaneproducts.com](http://www.fairlaneproducts.com).

Part #	Durometer	Material
RB-1540	60	Neoprene

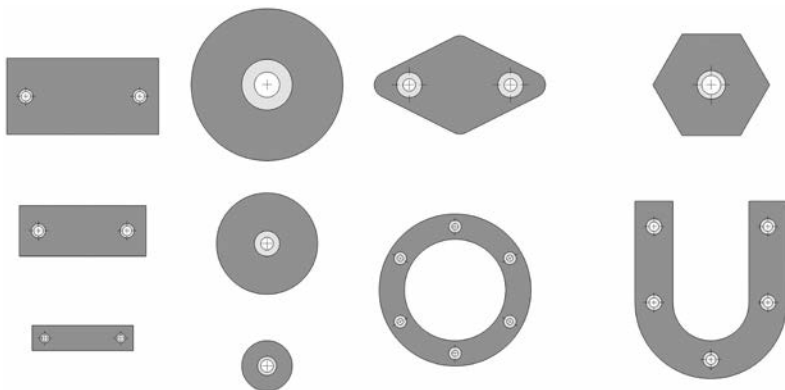
### Counter Bored - Aluminum Plate - 1-1/2" to 4"



Used for stops, guides, bumpers and protection. Molded bumper bonded to 1/8" aluminum plate. Neoprene offers good resistance against weather, gasoline, oil, ozone and high temperature. See page 6 for material and durometer specifications. View and download part CAD models at [www.fairlaneproducts.com](http://www.fairlaneproducts.com).

Part #	A	B	C	D	Durometer	E	F	G	Material
RB-241612-142	1-1/2	1	3/4	3/8	80	3/4	1/2	1/4	Neoprene
RB-281628-142	1-3/4	1	1-3/4	3/8	80	1	1/2	1/4	Neoprene
RB-481628-382	3	1	1-3/4	5/8	80	1-3/4	1/2	3/8	Neoprene
RB-482416-5162	3	1-1/2	1	1/2	80	2	3/4	5/16	Neoprene
RB-641612-142	4	1	3/4	1-1/2	80	1	1/2	1/4	Neoprene

### Custom Bumpers - Aluminum Plate



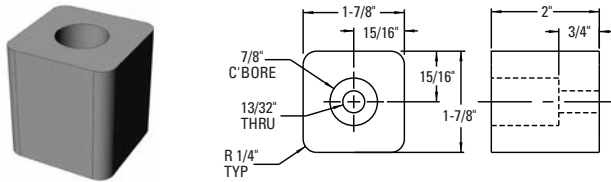
In addition to the standard bumpers shown in our catalog, we are equipped to provide a wide variety of custom bumpers using 80 durometer neoprene material with 1/8" aluminum plate backing. These custom bumpers are available in three standard thicknesses including 3/4", 1" and 1-3/4" but can be cut down to other thicknesses.

We can provide simple squares and rectangles up to nearly 24" in length depending on the thickness. We can also provide complex shapes. If your application requires a specific shape that includes contours, custom bumpers can be made from a CAD drawing. In addition to different shapes, these bumpers can be bored to accommodate a wide variety of fastening options.

For additional information or a quote, contact a Fairlane Products engineer at: 586-294-6100 or email [engineering@fairlaneproducts.com](mailto:engineering@fairlaneproducts.com)



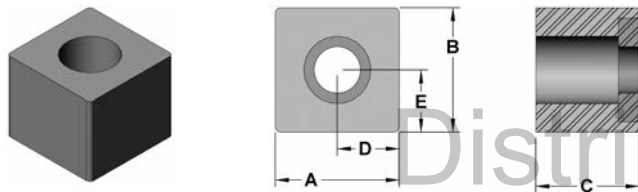
**Counter Bored - Without Plate - 1-7/8"**



Used for stops, guides, bumpers and protection. They do not have a plate backing so there is no metal to rust or corrode. Neoprene offers good resistance against weather, gasoline, ozone and temperature. See page 6 for material and durometer specifications. View and download part CAD models at [www.fairlaneproducts.com](http://www.fairlaneproducts.com).

Part #	Durometer	Material
RB-2020-C	80	Neoprene

**Counter Bored - Steel Plate - 3/4"**

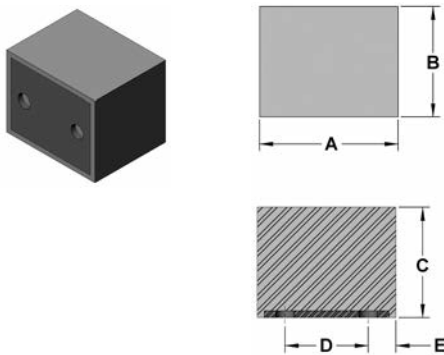


Used for stops, guides, bumpers and protection. Molded bumper bonded to steel plate. Neoprene offers good resistance against weather, gasoline, oil, ozone and high temperature. The Urethane offers highest resistance, strength and load bearing. High elongation hardness. Resistant to ozone and oxygen. See page 6 for material and durometer specifications. View and download part CAD models at [www.fairlaneproducts.com](http://www.fairlaneproducts.com).

Part #	A	B	C	D	E	For SHCS	Durometer	Material
RB-7575	3/4	3/4	5/8	3/8	3/8	1/4 (6MM)	80	Neoprene
RB-7575-60UR	3/4	3/4	5/8	3/8	3/8	1/4 (6MM)	60	Urethane
RB-7575-UR	3/4	3/4	5/8	3/8	3/8	1/4 (6MM)	80	Urethane

1-800-968-6868

**Solid Rubber - Steel Plate - 2-1/2"**



Used for stops, guides, bumpers and protection. Molded bumper bonded to steel plate. Neoprene offers good resistance against weather, gasoline, oil, ozone and high temperature. The Urethane offers highest resistance, strength and load bearing. High elongation hardness. Resistant to ozone and oxygen. Holes are only through steel plate and not into the rubber. See page 6 for material and durometer specifications. View and download part CAD models at [www.fairlaneproducts.com](http://www.fairlaneproducts.com).

Part #	A	B	C	D	E	Durometer	Material
RB-2025	2-1/2	2	2	1-1/2	1/2	80	Neoprene
RB-2025-UR	2-1/2	2	2	1-1/2	1/2	80	Urethane



Distributed by  
**AJACS**  
[www.fairlaneproducts.com](http://www.fairlaneproducts.com)  
1-800-968-6868

**Purchasing From Fairlane Products**

All items listed in this catalog are sold through a network of approved distributors. Original Equipment Manufacturers (OEM) may be able to purchase directly based on quantity, item and other criteria. Please call us at 586-294-6100 for assistance with any questions about purchasing or locating a distributor.

**Website**

Our website at [www.fairlaneproducts.com](http://www.fairlaneproducts.com) was developed to allow users easy access to a full array of services. Within our website you can easily search our entire product line for the exact part to fit your application. Full product information including materials, dimension and other technical data is available. In addition, CAD models can be viewed and downloaded in a variety of formats so you can integrate the parts directly into your CAD database or projects.

**Business Hours**

Representatives are available to assist you from 8:00 a.m. to 4:30 p.m. Eastern Time, Monday through Friday.

**Pricing**

OEM quantity price discounts are available for many items and apply to the quantity of each specific part. We do our best to hold pricing, however, any published prices are subject to change without notice. Quoted prices will be valid for 30 days.

**Shipments**

All items in this catalog are normally stocked. Backordered parts are always given a high priority and will ship as soon as they become available. For OEM customers, normal shipment is UPS – FOB Fraser Michigan unless otherwise noted. Shipping charges are prepaid and added to the invoice. Special charges and guidelines apply to shipments outside the United States. Buyers are responsible for all applicable taxes and duties on international shipments.

**Returns**

An RGA number must be issued before returning any products. All returns must be shipped via UPS and reference the RGA number on the outside of the box. Custom products cannot be returned.

**Custom Products**

Some products may be modified to meet your exact specifications. Please inquire for pricing. Once custom made products are in process, the order may not be cancelled. Custom made products cannot be returned.

**Material Data Safety Sheets**

Material Data Safety Sheets are available upon request.

**Specifications**

We do our best to represent our products as accurately as possible in both our catalogs and website, however, all specifications are subject to change without notice.

**Choice of Law**

The terms of sale for purchases from Fairlane Products shall be governed by and construed in accordance with the laws of the State of Michigan as applied to contracts made and to be performed in Michigan. Any action arising out of such purchases must be brought in courts in Michigan. Purchasers consent to the jurisdiction of the courts in Michigan and to service of process by registered mail, return receipt requested, or by other manner proved by law.

**Entire Agreement**

By placement of an order or by acceptance of goods ordered, buyer signifies agreement that no terms, conditions or warranties other than those stated here, and no agreement or understanding, oral or written, in any way purporting to modify these terms, conditions and or warranties, whether contained in buyer's purchase order or elsewhere, shall be binding on Fairlane Products.

**Customer Comments**

Everyone at Fairlane Products takes great pride in their work and truly strives for complete customer satisfaction. If you ever have any comments or suggestions on our products, service, catalogs or website, please let us know. They are appreciated and taken seriously.