

# PACKAGING EQUIPMENT



**STRETCH WRAP MACHINES**



**MANUAL CAROUSELS**



**FLOOR SCALES**



**STRAPPING DISPENSERS**



**PACKAGING CART**



**PLASTIC PALLETS**

Stretch Wrap Machines <b>v i</b> .....	148-150
Powered Carousels <b>v</b> .....	150
Manual Carousels <b>v i</b> .....	151-153
Turntables <b>v i</b> .....	153-154
Parts Scales <b>i</b> .....	154
Floor Scales <b>v i R</b> .....	155-157
Hand Held Stretch Wrappers <b>i</b> .....	158-159
Strapping Dispensers <b>v i</b> .....	160-161
Strapping & Strapping Tools <b>i</b> .....	162-163
Shrink Wrap Guns <b>i</b> .....	163
Edge & Cargo Protectors <b>i</b> .....	163
Packaging Tables and Carts <b>v i</b> .....	165-166
Steel & Aluminum Pallets <b>v i</b> .....	167
Plastic Pallets <b>i</b> .....	168-169



**LOW PROFILE  
STRETCH WRAP  
MACHINES**  
model SWA-51-AR5

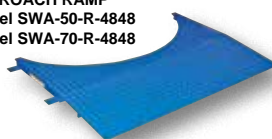


**POWERED STRETCH  
WRAP MACHINES**  
model SWA-50



**DIGITAL SCALE OPTION**  
model SWA-XX-SCALE  
(Stretch Wrap Machine sold separately.)

**APPROACH RAMP**  
model SWA-50-R-4848  
model SWA-70-R-4848



**CHAIN GUARD FOR  
POWERED MAST OPTION**  
model SWA-CG

## Low Profile Stretch Wrap Machine 115V 1-PHASE STANDARD, OPTIONS BELOW

The Low Profile Stretch Wrap Machine features a thin-spin carousel with the added benefit of a stretch wrap machine with powered rotation. The rotation is controlled by a foot switch, while the power input has a variable AC motor that allows adjustable deck speed and includes soft-start/stop. RPM is variable from 3 to 12. The loading and unloading is possible by the use of a manual or powered pallet truck. The unit has a built-in perimeter ramp and comes standard with a manual stretch wrap mast. The film-wrap tension is controlled with an adjustable, friction-brake assembly. Film placement is controlled manually by moving the carriage assembly up and down on the vertical mast. An easy-to-release, hand operated carriage-brake allows the carriage to move freely, making film application fast and easy. Optional 115V, 1 phase AC powered mast option (PMO) includes hand control with up and down buttons. Maximum load is 64<sup>11</sup>/<sub>16</sub>" in diameter (wrap height is 83<sup>3</sup>/<sub>4</sub>" high).

MODEL NUMBER	TURNTABLE DIAMETER	TURNTABLE HEIGHT	UNIFORM CAPACITY	WEIGHT (POUND)
SWA-51-AR5	51"	1"	4,000 lb.	766
SWA-51-AR5-M-RF	MANUAL MAST OPTION (RETROFIT)			597
SWA-51-AR5-PMO	POWERED MAST OPTION (FACTORY INSTALLED)			621
SWA-51-AR5-PMO-RF	POWERED MAST OPTION (RETROFIT - FIELD INSTALLED)			194

## Powered Stretch Wrap Machines 115V 1-PHASE STANDARD, OPTIONS BELOW

The Powered Stretch Wrap Machine increases productivity in the shipping department or at the end of a production line. This unit is complete with a powered turntable (RPM is variable from 3 to 12) and counter-balanced stretch film mast. This Stretch Wrap Machine is easy to operate, depress the foot pedal and manually move the mast up and down. The film-wrap tension is controlled with an adjustable, friction-brake assembly. Film placement is controlled manually by moving the carriage assembly up and down on the vertical mast. An easy-to-release, hand operated carriage-brake allows the carriage to move freely making film application fast and easy. The system will accept 10 (in.) to 20 (in.) material. The unit ships with mast disconnected to connect raise mast and clamp into place.

The standard manual film wrap delivery can be upgraded to 115V, 1 phase AC powered mast option (PMO). The hand held control is used to raise/lower the film. The foot control is used to operate the turntable. Optional Approach Ramp allows the operator to load and unload the machine with a pallet truck.

MODEL NUMBER	TURNTABLE DIAMETER	TURNTABLE HEIGHT	UNIFORM CAPACITY	MAXIMUM LOAD DIAMETER	MAXIMUM WRAP HEIGHT	WEIGHT (POUND)
SWA-50	50"	2 <sup>1</sup> / <sub>16</sub> "	4,000 lb.	64"	82"	597
SWA-70	70"	2 <sup>3</sup> / <sub>16</sub> "	4,000 lb.	84"	82"	985
STRETCH WRAP MACHINE OPTIONS & ACCESSORIES						
SWA-VCC-208/230-1	VOLTAGE CHANGE TO 208/230 VOLT, SINGLE (1) PHASE					--
SWA-VCC-208/230-3	VOLTAGE CHANGE TO 208/230 VOLT, THREE (3) PHASE					--
SWA-VCC-460-3	VOLTAGE CHANGE TO 460 VOLT, THREE (3) PHASE					--
SWA-50-R-4848	48"W x 39 <sup>15</sup> / <sub>16</sub> "L x 2"H APPROACH RAMP OPTION FOR SWA-50					221
SWA-70-R-4848	48"W x 39 <sup>15</sup> / <sub>16</sub> "L x 2"H APPROACH RAMP OPTION FOR SWA-70					399
SWA-50-SCALE	DIGITAL SCALE OPTION FOR SWA-50 (ADDS 3½" TO TURNTABLE HEIGHT - FACTORY INSTALLED)					680
SWA-70-SCALE	DIGITAL SCALE OPTION FOR SWA-70 (ADDS 3½" TO TURNTABLE HEIGHT - FACTORY INSTALLED)					884
SWA-50-R-4860-SCL	APPROACH RAMP FOR SCALE OPTION (SWA-50)					346
SWA-70-R-4860-SCL	APPROACH RAMP FOR SCALE OPTION (SWA-70)					352
SWA-COUNT	COUNTER OPTION, KEEP TRACK OF CAROUSEL ROTATION					1
SWA-NRTL-COMP	INCLUDES COMPONENTS APPROVED BY A NATIONALLY-RECOGNIZED TESTING LAB (NRTL)					0
SWA-INDEX	AUTO-INDEXING 90°, 120°, OR 180°					1
SWA-NM	SWA WITH NO MAST					601
SWA-CG	CHAIN GUARD FOR POWERED MAST (FOR SWA-50 & SWA-70 WITH PMO OPTION)					110
SWA-MST-FLR	FLOOR MOUNTED MAST BRACKET FOR STAND-ALONE APPLICATIONS. (SWA-50, -51, & -70 MASTS)					21
SWA-FILM	20"H x 80 ga. x 6,000' x 3" CORE (ONE ROLL)					42
POWERED MAST & OPTIONS						
SWA-5070LP-PMO	POWERED MAST OPTION (50" & 70" DIAMETER) - FACTORY INSTALLED					621
SWA-5070LP-PMO-RF	115V POWERED MAST OPTION (RETROFIT - FIELD INSTALLED)					194
SWA-5070LP-M-RF	MANUAL MAST OPTION (RETROFIT - FIELD INSTALLED)					
PMO-VCC-208/230-1	VOLTAGE CHANGE TO 208/230 VOLT, SINGLE (1) PHASE					--
PMO-VCC-208/230-3	VOLTAGE CHANGE TO 208/230 VOLT, THREE (3) PHASE					--
PMO-VCC-460-3	VOLTAGE CHANGE TO 460 VOLT, THREE (3) PHASE					--

## Medium Duty Powered Stretch Wrap Machines **115V 1-PHASE STANDARD / OPTIONS BELOW**

Our Medium Duty Powered Stretch Wrap Machines offer the same great features as our standard duty machines in a 5,000 pound capacity unit. Complete with a powered turntable (RPM is variable from 3 to 12) and counter-balanced stretch film mast. To operate, depress the foot pedal and manually move the mast up and down. The film-wrap tension is controlled with an adjustable, friction-brake assembly. Film placement is controlled manually by moving the carriage assembly up and down on the vertical mast. A hand operated carriage-brake allows the carriage to move freely making film application fast and easy. The system will accept 10 (in.) to 20 (in.) material. The unit ships with mast disconnected-simply raise mast and clamp into place.

The standard manual film wrap delivery can be upgraded to 115V, 1 phase AC powered mast option (PMO). The hand held control is used to raise/lower the film, while the foot control is used to operate the turntable. Please contact factory for Approach Ramp options on these models.



MODEL NUMBER	TURNTABLE DIAMETER	TURNTABLE HEIGHT	UNIFORM CAPACITY	MAXIMUM LOAD DIAMETER	MAXIMUM WRAP HEIGHT*	WEIGHT (POUND)
<b>SWA-54</b>	54"	11 <sup>1</sup> / <sub>16</sub> "	5,000 lb.	90"	80"	1314
<b>SWA-60</b>	60"	11 <sup>1</sup> / <sub>16</sub> "	5,000 lb.	90"	80"	1393
<b>ACCESSORIES &amp; OPTIONS</b>						
<b>SWA-5460-PMO</b>	POWERED MAST OPTION (54" & 60" DIAMETER) - FACTORY INSTALLED					144
<b>SWA-5460-PMO-RF</b>	115V POWERED MAST OPTION (RETROFIT - FIELD INSTALLED)					194
<b>SWA-54-SCALE</b>	DIGITAL SCALE OPTION FOR SWA-54 (ADDS 3 <sup>1</sup> / <sub>2</sub> " TO TURNTABLE HEIGHT - FACTORY INSTALLED)					500
<b>SWA-60-SCALE</b>	DIGITAL SCALE OPTION FOR SWA-60 (ADDS 3 <sup>1</sup> / <sub>2</sub> " TO TURNTABLE HEIGHT - FACTORY INSTALLED)					500
<b>SWA-COUNT</b>	COUNTER OPTION, KEEP TRACK OF CAROUSEL ROTATIONS					1
<b>SWA-NRTL-COMP</b>	UL APPROVED COMPONENTS					601
<b>SWA-INDEX</b>	AUTO-INDEXING 90°, 120°, OR 180°					1
<b>SWA-NM</b>	SWA WITH NO MAST					601

\*BASED ON 20" HIGH ROLL OF STRETCH WRAP MATERIAL

## Powered Stretch Wrap Machine **115V 1-PHASE STANDARD / OPTIONS BELOW**

Increase productivity in the shipping department or at the end of a production line. This unit is complete with a 48" diameter powered turntable and counter-balanced stretch film mast. Easy to operate, simply depress the foot pedal and manually move the mast up and down. Powered by a 115V, 1/2 HP motor with soft start/stop and variable speed control. Variable R.P.M. 3-12. Unit comes with one film rod with special spacers that can be used with any height roll of stretch wrap material between 10" and 20". Ships with mast knock-down. Some assembly required.

The Approach Ramp option allows the operator to load and unload the machine with a pallet truck (model SWA-48 only).

**SWA-48-PMO** is the **SWA-48** with a powered mast. Comes with a 24V hand control to work with those taller loads. The hand held control is used to raise/lower the film while the foot control is used to operate the turntable.



MODEL NUMBER	TURNTABLE DIAMETER	TURNTABLE HEIGHT	UNIFORM CAPACITY (POUNDS)	MAXIMUM LOAD DIAMETER	MAXIMUM WRAP HEIGHT	WEIGHT (POUND)
<b>SWA-48</b>	48"	2 <sup>3</sup> / <sub>8</sub> "	4,000	62"	83 <sup>3</sup> / <sub>4</sub> "	594
<b>SWA-48-PMO</b>	48"	2 <sup>3</sup> / <sub>8</sub> "	4,000	62"	83 <sup>3</sup> / <sub>4</sub> "	619
<b>ACCESSORIES &amp; OPTIONS</b>						
<b>SWA-PMO-RF</b>	115V POWERED MAST OPTION (RETROFIT - FIELD INSTALLED)					194
<b>SWA-SCALE</b>	DIGITALE SCALE OPTION (AVAILABLE ONLY ON SWA-48 & ADDS 3 <sup>1</sup> / <sub>2</sub> " TO HEIGHT - FACTORY INSTALLED)					339
<b>SWA-VCC-208/230-1</b>	VOLTAGE CHANGE TO 208/230 VOLT, SINGLE (1) PHASE					--
<b>SWA-VCC-208/230-3</b>	VOLTAGE CHANGE TO 208/230 VOLT, THREE (3) PHASE					--
<b>SWA-VCC-460-3</b>	VOLTAGE CHANGE TO 460 VOLT, THREE (3) PHASE					--
<b>SWA-R-4836</b>	48"W x 36"L x 2"H APPROACH RAMP (FOR ELECTRIC PALLET TRUCKS)*					170
<b>SWA-R-4848</b>	48"W x 48"L x 2"H APPROACH RAMP (FOR MANUAL PALLET TRUCKS)*					212
<b>SWA-R-48100-SCL</b>	48"W x 100"L x 6"H APPROACH RAMP (FOR SWA-48 WITH SCALE) (ELECTRIC & MANUAL PALLET TRUCKS)					600
<b>SWA-COUNT</b>	COUNTER OPTION, KEEP TRACK OF CAROUSEL ROTATION					1
<b>SWA-NRTL-COMP</b>	INCLUDES COMPONENTS APPROVED BY A NATIONALLY-RECOGNIZED TESTING LAB (NRTL)					--
<b>SWA-INDEX</b>	AUTO-INDEXING 90°, 120°, OR 180°					1
<b>SWA-FILM</b>	20"W x 80 ga. x 6,000' x 3" CORE (ONE ROLL)					42



model SWA-60-AW

## Medium Duty High Performance Auto-Wrap Stretch Wrap Machines 115V 1-PHASE STANDARD

The Medium Duty High Performance Auto-Wrap Stretch Wrap Machine has a user friendly control center that provides workers with efficient control of the wrapping process. The state of the art digital control circuit allows the operator to set the number of pallet rotations and film wrapping patterns, with four (4) standard multifunction wrapping patterns. The operator ties off the film wrap on the carousel and presses the start button. When the unit has completed the wrapping process, the operator can cut film or use auto brake feature and remove the wrapped pallet. The powered carousel has variable speeds 0 to 13 with a soft start and stop feature. Photocell sensors automatically adjust to different pallet heights. Uniform capacity is 4,000 pounds.

MODEL NUMBER	TURNTABLE DIAMETER	TURNTABLE HEIGHT	MAX. WRAP HEIGHT*	MAX. LOAD DIAMETER	WEIGHT (POUND)
SWA-60-AW <sup>®</sup>	59"	3 1/8"	88"	94"	1512
SWA-82-AW <sup>®</sup>	82"	3 1/8"	104"	118"	2186
SWA-R-60-AW	APPROACH RAMP (SWA-60-AW) 48"W x 61 13/32"L x 3"H				329
SWA-R-82-AW	APPROACH RAMP (SWA-82-AW) 48"W x 61 13/32"L x 3"H				310
SWA-60-AW-SCL	SCALE ONLY (FACTORY INSTALLED / ADDS 3 1/2" TO TURNTABLE HEIGHT)				924
SWA-R-60-AW-SCL	APPROACH RAMP FOR SCALE 48"W x 94"L x 6 1/2"H				543

\*BASED ON 20" HIGH ROLL OF STRETCH WRAP MATERIAL



## Material Pallet Stretch Wrap Machine (2) TWO 24V DC STANDARD

The Material Pallet Stretch Wrap Machine provides the flexibility to apply stretch wrap film at any work station. This portable walk around stretch wrapper has electronic touch sensitive controls to make packaging tasks easier. The DC battery powered lift moves film wrap up and down as operator walks around the packages. Designed to help wrap large and tall packages that could not be wrapped on the standard carousel stretch wrappers. Features an easy reload film system. The holder will accommodate rolls of wrapping material up to 20" long. The upright is constructed of aluminum while the rest is steel construction with powder coat yellow finish. Includes (4) 3" swivel casters. Film not included.

MODEL NUMBER	UNIFORM ROLL CAPACITY	MAXIMUM WRAP HEIGHT	MINIMUM WRAP HEIGHT	WEIGHT (POUND)
PEL-88-A-SWA	95 lb.	86"	2"	246
PEL-100-A-SWA				



model STPC-EHD

## Stand Alone Powered Carousels 115V 1-PHASE STANDARD

The Stand Alone Powered Carousel easily rotates pallets, skids, and other large objects. This Carousel includes a 48" round diamond plate turntable that is supported with inverted casters for use as bearings. Also included; turntable, base, 115V, 1 phase power unit, and variable-speed control (electric/hydraulic unit has fixed speed control). Turntable is operated with a foot control. Heavy-duty steel construction.

MODEL NUMBER	DESCRIPTION	R.P.M.	HEIGHT	UNIFORM CAPACITY	WEIGHT (POUND)
STPC-CD	CHAIN DRIVEN	3-12	24"	4,000 lb.	1728
STPC-EHD	ELECTRIC HYD. DRIVEN	8	13 1/2"	4,000 lb.	643
STPC-WH*	WHEEL DRIVEN	8	11"	3,000 lb.	475

\*BUILT-IN FORK POCKETS (7"W x 2 1/2"H)

model POW-CAR-AR5  
FEATURES BUILT-IN  
PALLET JACK RAMP

## Low-Profile Powered Carousels 115V 1-PHASE STANDARD

The Low Profile Carousel features a heavy-duty steel non-skid diamond plate platform. Model POW-CAR-AR5 features 300° built-in ramp allowing access for pallet trucks, approach ramp is not necessary. Model POW-CAR-50 is easily accessible with a fork truck; optional approach ramp available for use with pallet trucks. A foot control with a variable speed control (8 foot power cord), cushion start/stop, and rugged 3/4 HP motor with belt drive are standard. Units are pre-wired to work on 115V, 1 phase power.

MODEL NUMBER	CAROUSEL DIAMETER	CAROUSEL HEIGHT	UNIFORM CAPACITY	R.P.M.	WEIGHT (POUND)
POW-CAR-AR5	51"	1"	4,000 lb.	3-12	507
POW-CAR-50	50"	2 1/16"	4,000 lb.	3-12	599
POW-CAR-50-R-4848	APPROACH RAMP FOR POW-CAR-50 (48"W x 39 15/16"L x 2"H)				221
POW-CAR-M-RF	MANUAL MAST OPTION (FIELD INSTALLED)				597
POW-CAR-PMO	POWERED MAST OPTION (FACTORY INSTALLED)				621
POW-CAR-PMO-RF	115V POWERED MAST OPTION (FIELD INSTALLED)				194



model POW-CAR-50

## Heavy-Duty King Pin Carousels

The Heavy-Duty King Pin Carousel has all the ergonomic benefits of the standard carousel with a diamond top plate and stabilizing center pin. This Carousel will handle a wider variety of loads and includes a heavy-duty maintenance free bearing. The king pin design allows off set loading up to fifty (50) percent of the capacity on at least fifty (50) percent of the deck. Standard top plates are square with rounded corners.

MODEL NUMBER	SIZE (W x L)	HEIGHT	PLATE THICKNESS	UNIFORM CAPACITY	WEIGHT (POUND)
CA-KP-3636-4	36" x 36"	2 <sup>11</sup> / <sub>16</sub> "	1/4"	4,000 lb.	269
CA-KP-3636-6	36" x 36"	2 <sup>13</sup> / <sub>16</sub> "	3/8"	6,000 lb.	306
CA-KP-4848-4	48" x 48"	2 <sup>11</sup> / <sub>16</sub> "	1/4"	4,000 lb.	422
CA-KP-4848-6	48" x 48"	2 <sup>13</sup> / <sub>16</sub> "	3/8"	6,000 lb.	506
CA-KP-6060-4	60" x 60"	2 <sup>11</sup> / <sub>16</sub> "	1/4"	4,000 lb.	641
CA-KP-6060-6	60" x 60"	2 <sup>13</sup> / <sub>16</sub> "	3/8"	6,000 lb.	749
<b>OPTIONS</b>					
CA-HOD	HAND OPERATED LOCKING DETENT (FACTORY INSTALLED)				2

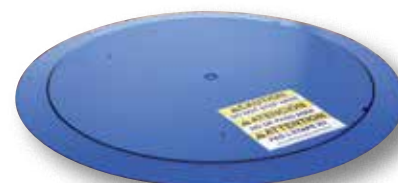


CENTER KING PIN

## Thin Spins - pallet truck loadable carousel

The Thin Spin is a pallet truck loadable carousel. When confronted with minimum floor space and only a hand pallet truck, the Thin Spin low-profile carousel is ideal for loading and unloading pallet applications. The unit is pallet truck loadable because of its sleek overall height. The detent lock restricts carousel rotation when not in use. The Carousel requires a starting force of approximately thirty-five (35) pounds and a maintaining force of twenty-five (25) pounds. Stainless Steel Thin Spins are constructed of type 304 stainless steel mill finish.

MODEL NUMBER	USABLE DIAMETER	OVERALL DIAMETER	HEIGHT	UNIFORM CAPACITY	WEIGHT (POUND)
LP-4000T	51"	59 <sup>11</sup> / <sub>16</sub> "	7/8"	4,000 lb.	300
LP-4000T-45	45"	53 <sup>11</sup> / <sub>16</sub> "	7/8"	4,000 lb.	278
LP-4000T-39	39"	47 <sup>11</sup> / <sub>16</sub> "	7/8"	4,000 lb.	232
<b>STAINLESS STEEL</b>					
LP-4000T-SS	51"	59 <sup>11</sup> / <sub>16</sub> "	7/8"	4,000 lb.	300
LP-4000T-45-SS	45"	53 <sup>11</sup> / <sub>16</sub> "	7/8"	4,000 lb.	253
LP-4000T-39-SS	39"	47 <sup>11</sup> / <sub>16</sub> "	7/8"	4,000 lb.	206



PAINTED THIN SPIN  
model LP-4000T-45

48 Hours  
to Ship



STAINLESS STEEL  
model LP-4000T-SS

## Heavy Duty Precision Turret Bearings

Designed for heavy duty bearing applications where the bearing load has a high aerial or radial load or applications where the load will be overhanging the bearing. Made from high strength steel alloy and precision ball bearings that provides a smooth, rotation without wobble. Contact us for assistance in specifying bearing with your application.

MODEL NUMBER	DIAMETER	HEIGHT	UNIFORM CAPACITY	WEIGHT (POUND)
PTB-19	19"	2 1/4"	6,000 lb.	98
PTB-24	24 1/4"	2 1/4"	6,000 lb.	117
PTB-32	32 1/8"	2 1/4"	6,000 lb.	149
PTB-40	40"	2 1/4"	6,000 lb.	188
PTB-46	46"	2 1/4"	6,000 lb.	215



model PTB-24

48 Hours  
to Ship

## Aluminum Mini Carousels

Designed for efficient loading and unloading operations. With an aluminum construction, the carousel rings can be placed on an existing work bench, scissor table, or even place on the floor. Additional features include; internally sealed roller bearings, guide rollers, and a powder coat finish.

MODEL NUMBER	DIAMETER	HEIGHT	UNIFORM CAPACITY	WEIGHT (POUND)
CA-5-12	12"	5/8"	500 lb.	3
CA-5-14	14"	5/8"	500 lb.	3
CA-5-24	24"	5/8"	750 lb.	8



model CA-5-14

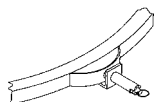
48 Hours  
to Ship



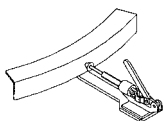
CAROUSEL IS SHOWN WITH RINGS SEPARATED TO ILLUSTRATE BEARINGS



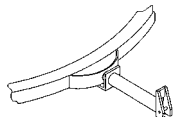
48 Hours  
to Ship



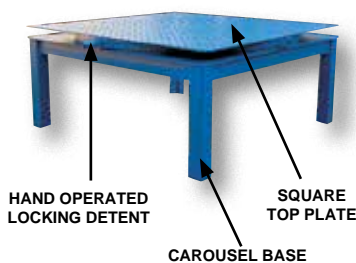
HAND OPERATED SPRING LOCKING DETENT  
LOCKS CAROUSEL EVERY 90°  
model CA-HOD



HAND OPERATED MANUAL BRAKE  
LOCKS CAROUSEL IN ANY POSITION  
(cannot be used with square top plate)  
model CA-HBK



FOOT OPERATED LOCKING DETENT  
LOCKS CAROUSEL EVERY 90°  
(cannot be used with square top plate)  
model CA-FTK



## Steel Manual Carousels

The Manual Carousels rotate materials with the assistance of an operator. Now loading and unloading operations can be done more efficiently; minimizing fatigue and risk of back injury. The carousel may be added to an existing work bench, scissor table, or placed on the floor. Constructed of two pieces of rolled structural angle (3/16" thick). A series of sealed ball bearings transfer the load smoothly and evenly to the supporting surface. Four guide rollers keep the rings aligned.

MODEL NUMBER	OUTER DIAMETER	UNIFORM CAPACITY (LB.)	OVERALL HEIGHT	SHIPS VIA	WEIGHT (POUND)
CA-18-2	18"	2,000	2"	UPS	21
CA-24-2	24"	2,000	2"	UPS	28
CA-24-4	24"	4,000	2"	UPS	30
CA-30-2	30"	2,000	2"	UPS	34
CA-30-4	30"	4,000	2"	UPS	36
CA-36-2	36"	2,000	2"	UPS	41
CA-36-4	36"	4,000	2"	UPS	45
CA-40-2	40"	2,000	2"	UPS	47
CA-40-4	40"	4,000	2"	UPS	47
CA-40-6	40"	6,000	2"	UPS	49
CA-48-2	48"	2,000	2"	TRUCK	71
CA-48-4	48"	4,000	2"	TRUCK	86
CA-48-6	48"	6,000	2"	TRUCK	97
CA-60-2	60"	2,000	2"	TRUCK	110
CA-60-4	60"	4,000	2"	TRUCK	116
CA-60-6	60"	6,000	2"	TRUCK	128
CA-72-2	72"	2,000	2"	TRUCK	163
CA-72-4	72"	4,000	2"	TRUCK	163
CA-72-6	72"	6,000	2"	TRUCK	169

CAROUSEL OPTIONS (PRICING IS IN ADDITION TO THE COST OF THE CAROUSEL)					
CA-HBK	MANUAL BRAKE (FIELD INSTALLED)				3
CA-HOD	HAND OPERATED LOCKING DETENT (FACTORY INSTALLED)				2
CA-FTK	FOOT OPERATED LOCKING DETENT (FACTORY INSTALLED)				3

### STEEL TOP PLATES FOR CAROUSEL (1/4" THICK)

MODEL NUMBER DIAMOND PLATE	MODEL NUMBER SMOOTH PLATE	STYLE	OVERALL SIZE	USE WITH CAROUSEL DIA.	WEIGHT (POUND)
CA-TP-18-R-TP	CA-TP-18-R-SM	ROUND	18" DIA.	18"	28
CA-TP-24-R-TP	CA-TP-24-R-SM	ROUND	24" DIA.	24"	45
CA-TP-30-R-TP	CA-TP-30-R-SM	ROUND	30" DIA.	30"	72
CA-TP-36-R-TP	CA-TP-36-R-SM	ROUND	36" DIA.	36"	101
CA-TP-40-R-TP	CA-TP-40-R-SM	ROUND	40" DIA.	40"	125
CA-TP-48-R-TP	CA-TP-48-R-SM	ROUND	48" DIA.	48"	180
CA-TP-60-R-TP	CA-TP-60-R-SM	ROUND	60" DIA.	60"	282
CA-TP-72-R-TP	CA-TP-72-R-SM	ROUND	72" DIA.	72"	405
CA-TP-18-S-TP	CA-TP-18-S-SM	SQUARE	18"W x 18"L	18"	25
CA-TP-24-S-TP	CA-TP-24-S-SM	SQUARE	24"W x 24"L	24"	45
CA-TP-30-S-TP	CA-TP-30-S-SM	SQUARE	30"W x 30"L	30"	73
CA-TP-36-S-TP	CA-TP-36-S-SM	SQUARE	36"W x 36"L	36"	101
CA-TP-40-S-TP	CA-TP-40-S-SM	SQUARE	40"W x 40"L	40"	125
CA-TP-48-S-TP	CA-TP-48-S-SM	SQUARE	48"W x 48"L	48"	180
CA-TP-60-S-TP	CA-TP-60-S-SM	SQUARE	60"W x 60"L	60"	282
CA-TP-72-S-TP	CA-TP-72-S-SM	SQUARE	72"W x 72"L	72"	405

DO NOT EXCEED THE DIAMETER OF CAROUSEL WHEN ORDERING TOP PLATES  
TOP PLATE & TOP RING ARE WELDED TOGETHER. CONTACT FACTORY FOR OTHER FASTENING OPTIONS.

### ELEVATED BASES FOR CAROUSELS - 12" HIGH (PRICING IS IN ADDITION TO THE COST OF THE CAROUSEL)

MODEL NUMBER	OVERALL SIZE (W x L)	CAPACITY UP TO (LB.)	WEIGHT (POUND)
CA-BASE-18-12	18"W x 18"L	2,000	101
CA-BASE-24-12	24"W x 24"L	4,000	121
CA-BASE-30-12	30"W x 30"L	4,000	146
CA-BASE-36-12	36"W x 36"L	4,000	175
CA-BASE-40-12	40"W x 40"L	6,000	197
CA-BASE-48-12	48"W x 48"L	6,000	260
CA-BASE-60-12	60"W x 60"L	6,000	355
CA-BASE-72-12	72"W x 72"L	6,000	465

New

### ELEVATED BASES FOR CAROUSELS - 24" HIGH (PRICING IS IN ADDITION TO THE COST OF THE CAROUSEL)

MODEL NUMBER	OVERALL SIZE (W x L)	CAPACITY UP TO (LB.)	WEIGHT (POUND)
CA-BASE-18-24	18"W x 18"L	2,000	315
CA-BASE-24-24	24"W x 24"L	4,000	365
CA-BASE-30-24	30"W x 30"L	4,000	415
CA-BASE-36-24	36"W x 36"L	4,000	445
CA-BASE-40-24	40"W x 40"L	6,000	495
CA-BASE-48-24	48"W x 48"L	6,000	550
CA-BASE-60-24	60"W x 60"L	6,000	630
CA-BASE-72-24	72"W x 72"L	6,000	690

New

## Stainless Steel Manual Carousels

The Manual Carousels rotate materials with the assistance of an operator. Now loading and unloading operations can be done more efficiently; minimizing fatigue and risk of back injury. The carousel may be added to an existing work bench, scissor table, or placed on the floor. Constructed of two pieces of rolled structural angle (3/16" thick). A series of sealed ball bearings transfer the load smoothly and evenly to the supporting surface. Guide rollers keep the rings aligned.



MODEL NUMBER	OUTER DIAMETER	UNIFORM CAPACITY (LB.)	OVERALL HEIGHT	SHIPS VIA	WEIGHT (POUND)
CA-40-2-SS	40"	2,000	2"	UPS	47
CA-40-4-SS	40"	4,000	2"	UPS	47
CA-40-6-SS	40"	6,000	2"	UPS	49

## Heavy-Duty Manual Turntables

The Heavy-Duty Manual Turntable maximizes workspace and minimizes wasteful motion. Bench top turntables allow workers to stay in one position and rotate items for access from all sides. No need to walk around the table to access areas out of view. Easy and smooth bearing motion. Used in hundreds of applications; displays, paint spraying, assembly units, repairs, etc. Easy, smooth rotation won't jostle delicate parts. Rugged  $\frac{5}{16}$ " steel plate construction. The double tier units feature a stationary shelf for storing parts and tools.



TYPE C

TYPE D

TYPE E

TYPE F

TYPE G

TYPE	MODEL NUMBER	DIAMETER	HEIGHT RANGE	DOUBLE TIER	HEIGHT ADJUSTMENT	UNIFORM CAPACITY	WEIGHT (POUND)
A	TT-8-7/8	8"	3/4"	NO	N/A	500 lb.	10
A	TT-12-7/8	12"	13/16"	NO	N/A	500 lb.	20
A	TT-18-7/8	18"	13/16"	NO	N/A	1,000 lb.	41
A	TT-24-7/8	24"	13/16"	NO	N/A	1,000 lb.	70
A	TT-30-7/8	30"	13/16"	NO	N/A	1,000 lb.	134
B	TT-8-4	8"	3 15/16"	NO	N/A	500 lb.	12
B	TT-12-4	12"	3 7/8"	NO	N/A	500 lb.	22
B	TT-18-4	18"	3 7/16"	NO	N/A	500 lb.	70
B	TT-N-24-4	24"	3 11/16"	NO	N/A	500 lb.	150
B	TT-N-30-4	30"	3 11/16"	NO	N/A	500 lb.	191
C	TT-18-PED	18"	20 15/16" TO 31 15/16"	NO	TURN KNOB	300 lb.	55
C	TT-N-24-PED	24"	20 15/16" TO 31 15/16"	NO	TURN KNOB	300 lb.	113
D	TT-18-DPED	18"	23 15/16" TO 34 15/16"	YES	TURN KNOB	300 lb.	114
D	TT-N-24-DPED	24"	24" TO 35"	YES	TURN KNOB	300 lb.	164
D	TT-N-30-DPED	30"	22 15/16" TO 33 15/16"	YES	TURN KNOB	300 lb.	206
E	TT-18-CPED	18"	21 1/16" TO 31 1/16"	NO	GAS CYLINDER	300 lb.	91
E	TT-N-24-CPED	24"	21 5/16" TO 31 5/16"	NO	GAS CYLINDER	300 lb.	148
F	TT-18-CDPED	18"	23 7/16" TO 33 7/16"	YES	GAS CYLINDER	300 lb.	112
F	TT-N-24-CDPED	24"	23 11/16" TO 33 11/16"	YES	GAS CYLINDER	300 lb.	169
G	TT-N-30-PED	30"	20 11/16" TO 31 11/16"	NO	TURN KNOB	300 lb.	185



model PT-250  
Operates on 115V AC.  
Other capacities available, contact factory.



series SSDSC



model CDSC-30



model PTDC-66



model BDSC-26

## Turntables with Powered Height Adjustment

Turntables with Powered Height Adjustment allow the operator to raise or lower the turntable to an ergonomic height. Each unit has a 360° manual turntable. DC powered with a lithium battery and hand control for height adjustment and features an on-board charger. Hand held pendant control connects to power unit with a coil cord. Height is adjusted with a linear-actuator. Rugged  $\frac{5}{16}$ " steel plate construction.

MODEL NUMBER	DIAMETER	HEIGHT RANGE	UNIFORM CAPACITY	WEIGHT (POUND)
TT-18-LA	18"	26 $\frac{15}{16}$ " to 42 $\frac{15}{16}$ "	750 lb.	234
TT-N-24-LA	24"	27 $\frac{11}{16}$ " to 42 $\frac{11}{16}$ "	750 lb.	290
TT-N-30-LA	30"	27 $\frac{11}{16}$ " to 42 $\frac{11}{16}$ "	750 lb.	330

## Powered Turntables 115V 1-PHASE STANDARD

The Powered Turntable helps keep tedious material handling at your fingertips. Easy, smooth, clockwise rotation for hundreds of applications. Rotation speed is non-adjustable. These Powered Turntables are wired to 115V, 1 phase. An on/off selector switch is incorporated with a 3' cord that provides power to the unit. A side skirt to protect items from getting into the rotating mechanism is standard. Rotation is clockwise. Rugged  $\frac{5}{16}$ " steel plate construction.

MODEL NUMBER	DIAMETER	HEIGHT	UNIFORM CAPACITY	R.P.M.	WEIGHT (POUND)
PT-100	12"	4 $\frac{5}{16}$ "	100 lb.	3-1/2	28
PT-250	18"	5 $\frac{5}{16}$ "	250 lb.	3	50
PT-750	18"	6 $\frac{3}{16}$ "	750 lb.	2	66

OPTIONAL 1 OR 2 R.P.M., model PT-1/2RPM (NOT available on PT-100)  
COUNTER-CLOCKWISE ROTATION, model PT-CCW

## Powered Photography Carousel 115V 1-PHASE STANDARD

The Powered Photography Carousel is ideal for photographing products, both large and small. Designed with a steel construction for added strength and resilience in a variety of settings. The unit is powered by a variable speed, belt driven motor and can be turned 360 degrees for full view of the product. To use, simply place the intended product on the turntable and activate the carousel motor. When moving the carousel from workstation to workstation, it is best to utilize the fork pockets attached to the underside of the unit for safe, ergonomic transporting. The fork pockets measure 7 $\frac{1}{2}$ "W x 2 $\frac{1}{2}$ "H on 22" centers.

MODEL NUMBER	CAROUSEL DIAMETER	CAROUSEL HEIGHT	UNIFORM CAPACITY	MAX R.P.M.	WEIGHT (POUND)
STPC-89-WH	89"	9"	3,000 lb.	1	1760

## Pallet Cart & Carousel

The Pallet Cart with Carousel is used to transport products to where they are needed. Then, once at the desired location, pulling the pin on the casters will allow the cart to manually rotate like a carousel for easy unloading and improved efficiency. The removable handle allows for full deck access from any position. Includes four glass-filled nylon swivel casters with swivel locks.

MODEL NUMBER	DIAMETER	PLATFORM HEIGHT	PLATFORM THICKNESS	UNIFORM CAPACITY	CASTER TYPE	WEIGHT (POUND)
CC-48	48"	10 $\frac{1}{2}$ "	1/4"	2,000 lb.	8" x 2"	240

## Parts Scales 115V 1-PHASE STANDARD

Scales capture a stable weight reading in less than a second. Features a rugged aluminum housing, stainless steel weighing pan, and a keyboard. Switches between pounds and kilograms.

MODEL NUMBER	DESCRIPTION	DECK SIZE (W x L)	UNIFORM CAPACITY	RESOLUTION (POUND)	WEIGHT (POUND)
SSDSC-6*	STAINLESS STEEL	7 $\frac{1}{2}$ " x 9"	6.6 lb.	0.002	9
SSDSC-13*	STAINLESS STEEL	7 $\frac{1}{2}$ " x 9"	13 lb.	0.005	9
SSDSC-66*	STAINLESS STEEL	7 $\frac{1}{2}$ " x 9"	66 lb.	0.02	9
PTDSC-66*	PLASTIC	7 $\frac{1}{2}$ " x 9"	66 lb.	0.02	6
BDSC-26	WEIGHING SCALE	7 $\frac{1}{2}$ " x 7 $\frac{7}{8}$ "	26 lb.	0.004	6
CDSC-30	COUNTING SCALE	10" x 12"	30 lb.	0.001	14

\*WATERPROOF

## Bench Scales - Legal for Trade (NTEP)

Designed for speed, accuracy, and high usage. Ideal for busy shipping docks, outdoor markets, and food processing. Mild steel platform, interlocking 304 stainless steel tray for easy cleaning. Adjustable tilt display for convenient viewing angles. Rechargeable battery and AC adapter. Aluminum environmentally sealed single point load cell. Adjustable feet provides exceptional traction. Removable column for indicator to work up to 4ft from the base. Environmental protection IP65 (splash-proof). Weight and count. Communication interface RS-232. LCD display (lbs, kgs, ounces, and grams).

MODEL NUMBER	PLATFORM SIZE (W x L)	CAPACITY x READABILITY	OVERALL SIZE (W x L x H)	WEIGHT (POUND)
BS-915-1212-100	12" x 12"	100 lb. x 0.2 lb	12" x 16" x 17"	25
BS-915-1214-150	12" x 14"	150 lb. x 0.2 lb	14" x 18" x 17"	26
BS-915-1616-300	16" x 16"	300 lb. x 0.5 lb	16" x 20" x 26"	34
BS-915-1620-400	16" x 20"	400 lb. x 0.5 lb	16" x 24" x 26"	40
BS-915-1818-400	18" x 18"	400 lb. x 0.5 lb	18" x 22" x 26"	42
BS-915-1824-500	18" x 24"	500 lb. x 0.1 lb	18" x 28" x 33"	66
BS-915-2020-500	20" x 20"	500 lb. x 0.1 lb	20" x 24" x 33"	64
BS-915-2424-500	24" x 24"	500 lb. x 0.1 lb	24" x 28" x 33"	72
BS-915-2424-1000	24" x 24"	1000 lb. x 0.2 lb	24" x 28" x 33"	72
BS-915BT-2424-100*	24" x 24"	1000 lb. x 0.2 lb	24" x 28" x 33"	74
BS-915RT-2424-100**	24" x 24"	1000 lb. x 0.2 lb	24" x 28" x 33"	76

\*BT (BALL TRANSFER TOP)

\*\*RT (ROLLER TOP)



## Portable Bench Scale - Legal for Trade (NTEP)

Convenient portable weighing platform. Easily move in and out of work areas. Swivel wheels & backrest for portability. High accuracy single point strain gauge aluminum load cell. Weight and count. LCD display (lbs, kgs, ounces, and grams).

**BS-915BW-1824-500** - Carbon steel platform and stainless steel cover. Environmental protection IP65 (splash-proof).

**BS-915SSBW-2424-500** - All 304 stainless steel construction. Nema 4x/IP68 rated.

MODEL NUMBER	PLATFORM SIZE (W x L x H)	CAPACITY x READABILITY	OVERALL SIZE (W x L x H)	WEIGHT (POUND)
BS-915BW-1824-500	18" x 24" x 8½"	500 lb. x 0.1 lb	18" x 28" x 33"	94
BS-915SSBW-2424-500*	24" x 24" x 8½"	500 lb. x 0.1 lb	24" x 28" x 33"	97

\*ALL STAINLESS STEEL WASH-DOWN IP67 RATED WITH STAINLESS STEEL WHEELS & BACKRAIL

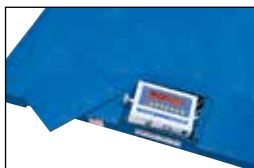


## Stainless Steel Bench Scales - Legal for Trade (NTEP)

Designed for hostile environments and washdown applications. 200% overload protection. Heavy duty tough panel. Rechargeable battery and AC adapter. All 304 stainless steel construction. Nema 4x/IP68 rated. Features include weighing, accumulation, tare, pre-tare, counting, peak and hold, and data output to PC.

MODEL NUMBER	PLATFORM SIZE (W x L)	CAPACITY x READABILITY	OVERALL SIZE (W x L x H)	WEIGHT (POUND)
BS-915SS-1212-100	12" x 12"	100 lb. x 0.2 lb	12" x 16" x 17"	31
BS-915SS-1214-150	12" x 14"	150 lb. x 0.2 lb	14" x 18" x 17"	33
BS-915SS-1616-300	16" x 16"	300 lb. x 0.5 lb	16" x 20" x 26"	42
BS-915SS-1620-400	16" x 20"	400 lb. x 0.5 lb	16" x 24" x 26"	49
BS-915SS-1818-400	18" x 18"	400 lb. x 0.5 lb	18" x 22" x 26"	49
BS-915SS-1824-500	18" x 24"	500 lb. x 0.1 lb	18" x 28" x 33"	68
BS-915SS-2020-500	20" x 20"	500 lb. x 0.1 lb	20" x 24" x 33"	68
BS-915SS-2424-500	24" x 24"	500 lb. x 0.1 lb	24" x 28" x 33"	88
BS-915SS-2424-1000	24" x 24"	1000 lb. x 0.2 lb	24" x 28" x 33"	89
BS-915SS-EPD	EXPLOSION PROOF DISPLAY			6





## Electronic Digital Floor Scales 115V 1-PHASE STANDARD

This scale has a low profile, allowing easy loading and unloading of heavy equipment. The rugged design has a tread plate top surface. Customer is responsible for contacting the local Weights and Measures Department or a state certified scale dealer before putting Legal for Trade (NTEP) scale into service for certification and is responsible for re-certification as required by local codes by certified personnel. Indexing accuracy is  $\pm 0.1\%$  of applied load or 1 division. The digital display stand is adjustable to 42" high and powered by (4) four C cell batteries (included) or 115V, 1 phase AC power, cord included. Optional Approach Ramp for pallet truck accessibility - order two for drive-on, drive-off convenience. Color may vary.

MODEL NUMBER	DESCRIPTION	OVERALL SIZE (W x L x H)	UNIFORM CAPACITY	WEIGHT (POUND)
<b>LEGAL FOR TRADE (NTEP)</b>				
SCALE-S-CFT-44-5K	SCALE	48" x 48" x 3½"	5,000 lb.	323
SCALE-S-CFT-55-5K	SCALE	60" x 60" x 3½"	5,000 lb.	492
SCALE-S-CFT-44-10K	SCALE	48" x 48" x 3½"	10,000 lb.	373
SCALE-S-CFT-55-10K	SCALE	60" x 60" x 3½"	10,000 lb.	471
<b>SCALE OPTIONS</b>				
SCALE-R-CS-44	RAMP	48" x 48" x 3½"	10,000 lb.	272
SCALE-R-CS-54	RAMP	60" x 48" x 3½"	10,000 lb.	272
SCALE-S-CFT-PRINTER	DIGITAL PRINTER			3
SCALE-S-PAPER	THERMAL ROLL PRINTER PAPER (10 ROLLS)			5



## "U" Shaped Platform Scales 115V 1-PHASE STANDARD

Constructed of heavy-duty steel to withstand the most demanding industrial environments, this scale is designed to handle pallets and is easy to move and store. Ideal for moving around the work place where there is not enough room for a fixed scale. Scale is suitable for weighing in a warehouse, storehouse, or general use. The scale is light weight and can be easily moved by one person with its two (2) wheels and handle. The scale comes equipped with four (4) heavy duty load cells and a deluxe indicator head. The mobile digital display stand is adjustable to 42" high and powered by (6) six AA batteries or 115V, 1 phase AC power, cord included. Individual sides are 5" wide. Accuracy is  $\pm 0.1\%$  of the applied load.

MODEL NUMBER	UNIFORM CAPACITY	OVERALL SIZE (W x L x H)	ACCURACY OF APPLIED LOAD	WEIGHT (POUND)
VPU-1	1,000 lb.	48" x 56" x 4¾"	$\pm 0.1\%$	176
VPU-2	2,000 lb.	48" x 56" x 4¾"	$\pm 0.1\%$	176
VPU-4	4,000 lb.	48" x 56" x 4¾"	$\pm 0.1\%$	176
VPU-6	6,000 lb.	48" x 56" x 4¾"	$\pm 0.1\%$	176

## Portable Floor Scales 115V 1-PHASE STANDARD

The Portable Floor Scale is ideal for easy transportation and weighing of goods at multiple locations. The scale has a non-slip diamond plate surface. Fold Down low gradual ramps are fixed to the platform. Ramps make the scale ideal for wheeling pallet trucks, dollies, carts, and containers on and off the platform. Four (4) alloy steel load cells and deluxe scale indicator head. Display powered by (6) six AA batteries or 115V, 1 phase AC power, cord included. Indexing accuracy is 1.1 pound.

MODEL NUMBER	UNIFORM CAPACITY	PLATFORM SIZE (W x L)	OVERALL SIZE WITH SLOPES (W x L x H)	WEIGHT (POUND)
VPFS-3B	3,000 lb.	47¾" x 39½"	60" x 78¾" x 2⅜"	460
VPFS-3C	3,000 lb.	59" x 59"	71" x 98½" x 2⅜"	716

## Low Profile Scales & Ramps 115V 1-PHASE STANDARD

Low Profile air freight (pancake) scales come standard with wrap-around ramps. Units feature ½" deck plate, grid core, and a ⅜" bottom skin with three center supports to prevent sagging. Suspension consists of fully electronic load cells on shock absorbing spherical washers. Ramps are constructed of heavy duty diamond plate with a 10° or 20% slope. Indexing accuracy is  $\pm 0.1\%$  of applied load or 1 division. The digital display stands 42" high and is 115V, 1 phase AC power, cord included.

MODEL NUMBER	UNIFORM CAPACITY	PLATFORM SIZE (W x L x H)	WEIGHT (POUND)
SCALE-LP-44-5K	5,000 lb.	48" x 48" x 3"	185
SCALE-LP-44-10K	10,000 lb.	48" x 48" x 3"	242
SCALE-LP-44-20K	20,000 lb.	48" x 48" x 3"	430



## Wash Down Floor Scales 115V 1-PHASE STANDARD

Ideal for food, chemical, and pharmaceutical applications, these scales can withstand daily wash down. Non-metallic deck insert, type 304 stainless steel frame, feet, and bolts standard. Also comes with stainless steel NTEP load cells and junction box. Easiest "clean-in-place" scale on the market. Just lift out the 1" thick polyethylene deck insert, leaving the stainless steel scale frame in place, and hose down! Accuracy to NIST H44. Indexing accuracy is +/- 0.1% of applied load or 1 division. The digital display is powered by 115V, 1 phase AC power, cord included.

MODEL NUMBER	UNIFORM CAPACITY	PLATFORM SIZE (W x L x H)	WEIGHT (POUND)
SCALE-LT-44-5K	5,000 lb.	48" x 48" x 4"	296
SCALE-LT-55-5K	5,000 lb.	60" x 60" x 4"	336
SCALE-LT-44-10K	10,000 lb.	48" x 48" x 4"	351
SCALE-LT-55-10K	10,000 lb.	60" x 60" x 4"	391

## Stainless Steel Scales 115V 1-PHASE STANDARD

All purpose stainless steel floor scales are designed to withstand the widest variety of demanding industrial applications, including pharmaceutical, heavy wash down, food processing, chemical, and hazardous areas. Heavy duty Type 304 structural steel construction with stainless steel enclosure, hardware, and feet. Uses four hermetically sealed, stainless steel NTEP load cells. Indexing accuracy is +/- 0.1% of applied load or 1 division. The digital display is powered by 115V, 1 phase AC power, cord included. Smooth top standard, diamond plate available.

MODEL NUMBER	UNIFORM CAPACITY	PLATFORM SIZE (W x L x H)	WEIGHT (POUND)
SCALE-ST5-44-5K	5,000 lb.	48" x 48" x 3½"	384
SCALE-ST5-55-5K	5,000 lb.	60" x 60" x 3½"	419
SCALE-ST5-44-10K	10,000 lb.	48" x 48" x 3½"	439
SCALE-ST5-55-10K	10,000 lb.	60" x 60" x 3½"	474

## Heavy-Duty Domestic Floor Scales 115V 1-PHASE STANDARD

Heavy-duty, 10,000 pound capacity bases utilize a strong 2" channel perimeter and 7" @ 9.8# per foot channel understructure. Plate features up to 3/8" tread and the load cells are 5K-LE.

20,000 lb. capacity bases utilize 1/2" thick diamond plate with 10K-LE load cells.

SCALE-SC20-44-20K utilizes 7" @ 9.8# per foot channel under structure and the same perimeter, while the SCALE-SC20-55-20K uses 8" @ 20# per foot channel understructure and perimeter.

These are the ultimate, all around heavy bases! Contact factory for ramp options. Indexing accuracy is +/- 0.1% of applied load or 1 division. The digital display is powered by 115V, 1 phase AC power, cord included.

MODEL NUMBER	UNIFORM CAPACITY	PLATFORM SIZE (W x L x H)	WEIGHT (POUND)
SCALE-DH10-44-10K	10,000 lb.	48" x 48" x 5"	450
SCALE-DH10-55-10K	10,000 lb.	60" x 60" x 5"	650
SCALE-SC20-44-20K	20,000 lb.	48" x 48" x 5½"	654
SCALE-SC20-55-20K	20,000 lb.	60" x 60" x 5½"	1183

## Low Profile Floor Scales 115V 1-PHASE STANDARD

The Low Profile Floor Scale is ideal for shipping and receiving areas. Industrial grade heavy duty mild steel platform scale ensures durability that will withstand years of daily use. Features an anti-slip rugged steel diamond plate surface with heavy duty welded channel support. Scale has a powder coat finish and can be pit mounted or free standing. It also has adjustable leveling feet standard and operator controls for zero, tare, unit, net/gross, and print. Unit converts to pound or kilograms with a deluxe scale indicator. The mobile digital display stand is adjustable to 42" height and powered by (6) six AA batteries or 115V, 1 phase AC power, cord included.

MODEL NUMBER	UNIFORM CAPACITY	PLATFORM SIZE (W x L x H)	INDEXING ACCURACY	WEIGHT (POUND)
VLPFS-2	2,000 lb.	36" x 36" x 4"	0.5 lb.	200
VLPFS-4A	4,000 lb.	48" x 48" x 4"	1 lb.	280
VLPFS-4B	4,000 lb.	60" x 60" x 4"	1 lb.	446
VLPFS-20	20,000 lb.	96" x 120" x 6¾"	1 lb.	2200
VLPFS-R-3636	APPROACH RAMP 36"L x 36"W, 4.45° ANGLE			160
VLPFS-R-3648	APPROACH RAMP 36"L x 48"W, 4.45° ANGLE			188
VLPFS-R-3660	APPROACH RAMP 36"L x 60"W, 4.45° ANGLE			208
VLPFS-R-3696	APPROACH RAMP 36"L x 96"W, 10° ANGLE			430



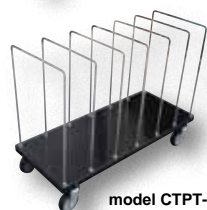
20,000 LB. CAPACITY SCALE SHOWN WITH OPTIONAL APPROACH RAMPS. CONTACT FACTORY FOR RAMP INFORMATION.



SHOWN WITH TWO APPROACH RAMPS  
APPROACH RAMPS SOLD EACH



model CTC-1856-B



model CTPT-1844-CK

48 Hours  
to Ship

## Portable Carton Carts

Portable Carton Carts are designed to store, organize, and transport your empty cardboard boxes. Unit has chrome plated uprights and frame dividers with powder coated black shelves. Model CTC-1856-B features two adjustable-height shelves with adjustable box dividers ideal for small boxes. Four swivel casters for easy maneuverability are standard. Model CTPT-1844-CK has adjustable box dividers ideal for oversized boxes. The seven dividers can be positioned along the cart deck in any of seven pre-drilled positions. The unit rolls on four (4) 5" x 1 1/4" poly-on-poly casters.

MODEL NUMBER	OVERALL SIZE (D x L x H)	# OF DIVIDERS	SPACE BETWEEN DIVIDERS	UNIFORM CAPACITY	WEIGHT (POUND)
CTC-1856-B	19 <sup>13/16</sup> " x 56 <sup>1/2</sup> " x 59 <sup>1/8</sup> "	8	4"	400 lb.	142
CTPT-1844-CK	18" x 44" x 30"	7	8"	400 lb.	94

## Carton & Box Staplers

The Carton and Box Stapler is a manually operated stapler used to close/seal cardboard boxes. This Stapler is lightweight and easy to operate. Two (2) adjustable functions for adjusting staple clamping force and depth. Staples are sold separately.



model STAPLE-58



model STAPLE-34

48 Hours  
to Ship

MODEL NUMBER	CAPACITY	STAPLE WIDTH	STAPLE LENGTH	WEIGHT (POUND)
STAPLE-58	100 STAPLES	1 3/8"	5/8"	6
STAPLE-34	100 STAPLES	1 3/8"	3/4"	6
STAPLE-BX-58	5/8" STAPLES / 2,000 PIECES PER BOX			6
STAPLE-BX-34	3/4" STAPLES / 2,000 PIECES PER BOX			4

## Plastic Cable Tie Gun

The Plastic Cable Tie Gun is great for the manufacturing and distributing trades. The unit is constructed of plastic for a lightweight, comfortable feel for longtime use. By using the cable tie gun the user can tighten the products to a more precise tension, ensuring that all products are bundled safely and securely. The unit fits cables sized 0" - 0.2" in width.

48 Hours  
to Ship

MODEL NUMBER	OVERALL SIZE (W x L x H)	CABLE TIE WIDTHS	WEIGHT (POUND)
CGUN-002	1" x 6 1/2" x 3 1/2"	0" to 0.2"	2



model BAND-92



model BAND-34

48 Hours  
to Ship

## Jumbo Rubber Bands

The Pallet Band minimizes carton shifting to reduce product damage of pallets in transit. Easy to use without any need for special equipment. Unit is cost effective and environmentally friendly. Moisture will not get trapped under rubber band. Packaged 50 pieces per carton.

The Drum Band is used to help secure drum liners. Unit is cost effective and environmentally friendly. Packaged 50 pieces per carton.

MODEL NUMBER	ACCOMMODATES	WIDTH	NET WEIGHT (PER PKG. LB.)
BAND-92	Pallets 40" x 48" min. to 48" x 48" max.	3/4"	12
BAND-34	55 gallon drums to secure drum liners	1/2"	3

## Quick Wrapper

The Quick Wrapper is designed to allow for quick wrapping of pallets, while improving ergonomic posture during the wrapping process. Also allows for improved efficiency versus standard hand dispensers. The wrapper has a hand-operated tension/brake for film stretch. Ships knocked down.

48 Hours  
to Ship

MODEL NUMBER	CONSTRUCTION	CORE ID	WRAP LENGTHS	WEIGHT (POUND)
QW-1	ALUMINUM	3"	11" - 20"	4

## Hand Held Stretch Wrappers

The Hand Held Stretch Wrapper is a lightweight, freewheeling dispenser that maintains precision tension control that insures a tight, smooth application. The ergonomically bent, foam covered handle reduces both bending and fatigue, while allowing operators to apply the bottom row of wrap just as tight as the top. Accommodates rolls up to 8" in diameter.

The compact Stretch Wrap Knife is small enough to fit in your pocket. Specially angled cutting head easily slices through stretch wrap material without sticking or binding. Safety design will not cut user or products. Made of high-density plastic. Replacement blades available.

MODEL NUMBER	DESCRIPTION	ROLL HEIGHTS	CORE SIZE	WEIGHT (POUND)
SW-HAND-R <sup>®</sup>	ROUND STYLE	12" TO 20"	2" & 3"	4
SW-HAND-BG <sup>®</sup>	ERGO STYLE	12" TO 20"	1/2", 2" & 3"	4
SW-HAND-WS	ERGO STYLE	6" TO 24"	2" & 3"	5

MODEL NUMBER	DESCRIPTION	WEIGHT (POUND)
SW-KNIFE <sup>®</sup>	STRETCH WRAP FILM KNIFE	1
SW-RB <sup>®</sup>	REPLACEMENT BLADES (BOX OF 100 BLADES)	1
SRF-18 <sup>®</sup>	FILM FOR HAND HELD WRAPPER 18" WIDE x 1,500 FEET (80 gauge) 4 ROLLS PER CASE	38

## Stretch Wrap Dispensers

A) Easy to use fingertip units fit into core and allow for dispensing stretch wrap around your product. Brake feature included for controlling film tension while dispensing. Sold per pair.

B) Hand held dispensing handles are made of plastic and allow for easy stretch wrap dispensing with spin handle. Sold per each.

C) Slip over extended core rolls of stretch wrap. Squeeze grip to control film tension while wrapping. PVC construction allows for comfortable grip. Sold each.

ITEM	MODEL NUMBER	TAPE WIDTH	CORE SIZE	WEIGHT (POUND)
A	SWD-1 <sup>®</sup>	ANY	3"	1
B	SWD-2/1.5 <sup>®</sup>	5"	1½"	2
B	SWD-2/2 <sup>®</sup>	5"	2"	2
B	SWD-2/3 <sup>®</sup>	5"	3"	2
C	SWD-3 <sup>®</sup>	ANY	1½"	1

## Cutters

A) Works conveniently, safely, and quickly on straps, cardboard, and tape. Includes pocket clip.

B) Designed to cut bubble wrap, foam, film, twine, and similar materials. Hand formed grip for convenience.

C) Multi-function package opener quickly cuts strapping, film, rope, and tape. The heavy-duty retractable claw removes staples.

D) The Box Size Cutter recycles boxes with ease. Post has printed scale to expedite accuracy and convenience to score the box so that it can be folded over neatly to change the depth.

ITEM	MODEL NUMBER	DESCRIPTION	WEIGHT (POUND)
A	CUT-D-1 <sup>®</sup>	DOUBLE ENDED CUTTER	1
B	CUT-2 <sup>®</sup>	CUTTER FOR THICK MATERIAL	1
C	MPO-3 <sup>®</sup>	MULTI-FUNCTION PACKAGE OPENER	1
D	SIZER-4 <sup>®</sup>	BOX SIZE CUTTER	2

## Pallet Wand

Allows for easy guidance of strapping through pallets. Decrease the time it takes to manually strap pallets. Flexible black fiberglass construction. Steel spring clip securely holds strapping.

MODEL NUMBER	OVERALL SIZE (W x L)	WAND THICKNESS	WEIGHT (POUND)
WAND-3 <sup>®</sup>	1" x 52¾"	1/8"	2

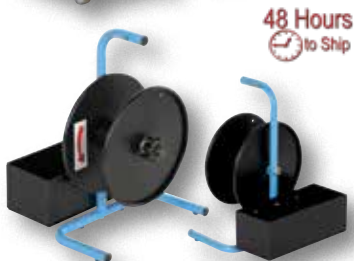




## Heavy-Duty Banding Cart

Heavy-duty "industrial grade" strapping and banding cart includes fork pockets for use with lift trucks and standard 27" wide pallet trucks. Includes lifting eye for use with overhead crane. Also comes standard with a steel tool storage tray (18"W x 7"D x 3½"H usable) and 16" diameter foam wheels. Works with strapping core sizes of 16" x 3", 16" x 6" and 8" x 8", available on page D15.

MODEL NUMBER	ACCEPTABLE STRAPPING	OVERALL SIZE (W x D x H)	WEIGHT (POUND)
STRAP-FP	STEEL & POLY	38" x 26 <sup>7</sup> / <sub>16</sub> " x 48 <sup>13</sup> / <sub>16</sub> "	131



## Poly Strapping Dispenser

Designed for dispensing rolls of poly strapping. Handy lightweight and easy to use design. Handle includes strap retainer for convenience. Storage bin for buckles and other tools. Steel construction with painted finish.

MODEL NUMBER	ACCEPTABLE STRAPPING	MAXIMUM COIL WIDTH	MAXIMUM STRAP WIDTH	USABLE CORE DIAMETER	WEIGHT (POUND)
STRAP-P <sup>®</sup>	POLY	6¼"	1½"	3"	15



## Vertical/Horizontal Strapping Cart

Unique cart allows the operator to apply strapping both vertically and horizontally around the load. For use with both steel and poly strapping. To use, engage outer detents (disengaging inner) and turn the removable handle until strap is in the horizontal position. Once in the horizontal position, disengage the outer detents and engage the inner detents. The strap can now be raised and lowered from 28" down to 8" with the same handle. Each unit comes standard with 10" x 2½" semi-pneumatic wheels. The equipment tray measures 14"W x 6"L x 4½"D. Works with strapping core sizes of 16" x 3", 16" x 6" and 8" x 8", available on page D15.

MODEL NUMBER	OVERALL SIZE (W x D x H)	MAXIMUM DIAMETER	ACCEPTABLE STRAPPING	WEIGHT (POUND)
STRAP-VH <sup>®</sup>	26 <sup>9</sup> / <sub>16</sub> " x 30 <sup>11</sup> / <sub>16</sub> " x 47½"	24"	STEEL & POLY	176



## Manual Pallet Probe Strapping Cart

- Increase Productivity • Economical, Fast, Easy • Low Maintenance

The Manual Pallet Probe Strapping Cart is a quick answer to a long time dilemma - getting poly strapping through your pallet. To use, transport cart to your loaded pallet, extend arm, and run strapping to end clip. After strapping is secure, roll cart probe into pallet along center stringer. The strapping arm will then protrude out the other end allowing the operator to pull the strapping up and over the pallet. Unit accepts polypropylene strapping. Tray size is 19"W x 5¾"D. The maximum core width is 5", while the minimum core width is 2½". Overall material diameter is 16" with a minimum of 13¾". Works with poly strapping core sizes of 16" x 3", 16" x 6" and 8" x 8", available on page D15.

MODEL NUMBER	ARM LENGTH RETRACTED/EXTENDED	MAXIMUM DIAMETER	ACCEPTABLE STRAPPING	WEIGHT (POUND)
STRAP-P2 <sup>®</sup>	40" TO 64"	24"	POLY	132



## Strapping Carts

Universal strapping carts are designed for use with Poly and Steel strapping.

**STRAP-PS-HD** features unique multi-tier discs for use with strapping core sizes of 16" x 3", 16" x 6" and 8" x 8". Cart includes storage tray and two (2) 8" x 2" hard rubber wheels for easy portability. Powder coat finish. Poly and steel strapping available separately on page D15.

**STRAP-PS-P** is a lightweight strapping cart with plastic disc and integral tool tray. Designed for use with poly strapping that has a core size of 8" x 8" see page D15. Great for everyday use around the warehouse, including box sealing and bundle applications. Two (2) 8" x 2" plastic wheels for easy maneuvering.

MODEL NUMBER	ACCEPTABLE STRAPPING	OVERALL SIZE (W x D x H)	WEIGHT (POUND)
STRAP-PS-HD <sup>®</sup>	STEEL & POLY	24 <sup>7</sup> / <sub>8</sub> " x 20½" x 43"	58
STRAP-PS-P <sup>®</sup>	POLY	16 <sup>3</sup> / <sub>8</sub> " x 17½" x 37½"	20

## Wall-Mounted Strapping Dispenser

This unique Wall-Mounted Strapping Dispenser is for use with steel and poly strapping. The mounting bracket pivots to allow for use in any direction. The unit also pivots up to 180° to allow for easier loading of new strapping coils. Works with strapping core sizes of 16" x 3", 16" x 6" and 8" x 8".available on page D15.

MODEL NUMBER	OVERALL SIZE (W x D x H)	ACCEPTABLE STRAPPING	WEIGHT (POUND)
STRAP-WALL	29½" x 10¾" x 30⅜"	STEEL & POLY	125

## Semi-Automatic Pallet Probe Strapping Machine

- User Friendly
- Tension up to 175 pound
- 40" Foldable Pallet Probe
- Uses 3/8", 1/2", and 5/8" Poly Strapping

115V 1-PHASE STANDARD

The Semi-Automatic Pallet Probe Strapping Machine eliminates hand strapping and speeds up the process of pallet strapping. This Strapping Machine is user friendly and automatically feeds the desired polypropylene strap through the pallet, tightens, and seals the strap around the pallet. The pallet strapping process is as follows: (1) unfold pallet probe, (2) push pallet probe into pallet, (3) feed polypropylene strap, (4) insert tip of strap into strap way, (5) adjust tension by pulling automatically into heat seal, (6) strip is then cut off to feed the strap out, (7) one-cycle automatically complete, (8) remove machine and insert into next pallet. Polypropylene strapping available separately on page D15.

MODEL NUMBER	OVERALL SIZE (W x D x H)	FEED STRAP HEIGHT	TENSION (POUND)	WEIGHT (POUND)
DBA-130®	31½" x 23" x 55"	53½"	175 lb.	393

## Semi-Automatic Strapping Machine

115V 1-PHASE STANDARD

- Minimize Packaging Time
- User Friendly Controls
- Portable for Convenience
- Secure Contents Effectively
- Stainless Steel Strapping Surface
- Easy Access for Reloading Strapping

The fully portable strapping machine dispenses, tightens, and seals economical polypropylene strapping around packages or bundles. This Strapping Machine automatically tensions strap and joins the ends with a secure heat weld for content security. The unit features a stainless steel strapping surface and easy access for reloading strapping. The motor automatically switches off when not in use. As the strap is inserted, the motor automatically restarts. Strap tension is adjustable 11 to 140 pounds. Strapping core size is diameter/width (in.) 8" x 8" or 9" x 8". Polypropylene strapping available separately on page D15.

MODEL NUMBER	OVERALL DIMENSIONS	STRAPPING WIDTH	POWER SUPPLY	CASTER SIZE	WEIGHT (POUND)
S-2001®	23"W x 35½"L x 30"H	⅜" & ½"	115V	3" x 1¼"	268

## High Speed Strapping Machine

115V 1-PHASE STANDARD

- Dispenses 3/8" or 1/2" polypropylene strapping
- Heat welds polypropylene strapping
- Strap tension is adjustable 15 to 150 pounds
- Strapping core size is 6" to 9"
- Automatic strapping operation
- Up to 30 cycles per minute
- User friendly controls
- Easy access for reloading strapping

The High Speed Strapping Machine is a productive solution to most polypropylene strapping tasks. The automatic Arch Strapping Machine features the "Auto-Feeding" function that automatically feeds polypropylene strapping to arch and is ready for each application. The "Auto-Positioning" system automatically positions and secures the polypropylene strapping efficiently for each cycle.

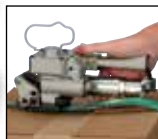
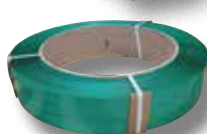
The "Jam-Free" feature ejects missed strap cycles and resets the unit. The user friendly controls allow the operator to choose between panel mounted controls, foot pedal, or table top ball switch. Actual production will vary depending on package size, chute size, and operator dexterity. The unit has heat welded polypropylene strapping, easy access for reloading strapping, and portability for convenience. Polypropylene strapping available separately on page D15.

MODEL NUMBER	MAXIMUM PACKAGE SIZE (W x H)	TABLE TOP HEIGHT	OVERALL SIZE (W x D x H)	WEIGHT (POUND)
ASM-3123	29¼" x 22½"	31½"	48⅜" x 23⅞" x 58"	531





48 Hours  
to Ship



model  
PN-58-16X6-GN

## Pneumatic Strap Sealer

Pneumatic Strap Sealer is a pressure type sealer which tightens, and seals economical polypropylene strapping around packages or bundles. The overlapped polyester band is welded by heat pressure in approximately 2 to 5 seconds. Requires an air-filter-regulator, a minimum hose inside diameter of 1/4", and air pressure of 72 to 100 PSI. The green poly strapping has a coil size of 16" x 6" core. Strapping length per roll is 4200 feet. Tensile strength is 1,400 pounds.

MODEL NUMBER	DESCRIPTION	OVERALL SIZE (W x L x H)	WEIGHT (POUND)
PN-ST-1	SEALER	5.89" x 10.96" x 6.81"	11
PN-58-16X6-GN	POLY STRAPPING	0.625" x 4200 x 0.035"	69

## Poly Strapping & Seals

The Poly Strapping and Seals are the most commonly used strapping material. These are lightweight and easy to handle. Polypropylene strapping is an excellent choice for light duty palletizing, carton closing, and bundling. Tensile strength is 300 pounds.

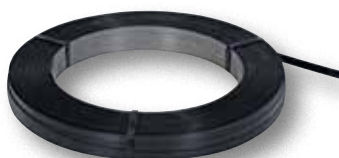
Model PSEAL-12 features metal seals that are to be used on poly strapping and sealed with a poly sealer.

MODEL NUMBER	DESCRIPTION	QUANTITY	WEIGHT (POUND)
ST-12-8X8-BL	1/2" STRAPPING (8" x 8" CORE)	9,000 FEET	18
ST-12-16X3-BL	1/2" STRAPPING (16" x 3" CORE)	4,500 FEET	14
ST-12-16X6-BL	1/2" STRAPPING (16" x 6" CORE)	9,000 FEET	22
PSEAL-12	1/2" SEALS FOR POLY STRAPPING	1000 PCS.	14



HEAVY-DUTY  
POLY STRAPPING & SEALS

48 Hours  
to Ship



HIGH STRENGTH  
STEEL STRAPPING

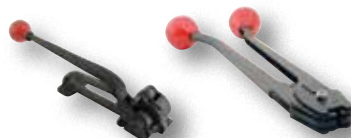
## Steel Strapping

Provides strong reinforcement for those demanding jobs. Ideal for general packaging, bundling, and palletizing. Strap thickness is 0.20". Black in color.

MODEL NUMBER	DESCRIPTION	BREAK STRENGTH	QUANTITY	WEIGHT (POUND)
SS-12-HS	1/2" STRAPPING (16" x 3" CORE)	1170 lb.	2,940 FT.	105
SS-58-HS	5/8" STRAPPING (16" x 3" CORE)	1460 lb.	2,360 FT.	106
SS-34-HS	3/4" STRAPPING (16" x 3" CORE)	1760 lb.	1,960 FT.	113
SSEAL-12	1/2" SEALS FOR STEEL STRAPPING		1000 PCS.	10
SSEAL-58	5/8" SEALS FOR STEEL STRAPPING		1000 PCS.	13
SSEAL-34	3/4" SEALS FOR STEEL STRAPPING		1000 PCS.	15

## Poly and Steel Strapping Tools

Tools and supplies you need to cut and seal strapping. Cutters cut up to 2" wide strapping. Tensioner features ratchet action that applies maximum tension instantly, pulling and cutting 3/4" strapping with little effort. Model PKG-TSCP-75 is ideal for working in cold environments (-40°) resistance.



model PKG-ST

model PKG-SS-SM



model PKG-TSCP-75



model PKG-PTC



model PKG-SS-LG



model PKG-C-1



model PKG-C-125



model PKG-C-2



model PKG-PS



model PKG-PS-D



model PKG-TSCP-75

48 Hours  
to Ship



MODEL NUMBER	DESCRIPTION	STRAPPING TYPE	STRAPPING WIDTH	WEIGHT (POUND)
PKG-ST	TENSIONER	STEEL	3/8" to 3/4"	5
PKG-SS-SM	SEALER	STEEL	3/8" & 1/2"	2
PKG-SS-LG	SEALER	STEEL	5/8" & 3/4"	4
PKG-C-1	CUTTER	STEEL	3/8" to 1"	2
PKG-C-125	CUTTER	STEEL	3/8" to 1 1/4"	3
PKG-C-2	CUTTER	STEEL	3/8" to 2"	3
PKG-TSCS-75	TENSIONER/SEALER/CUTTER	STEEL	1/2" to 3/4"	8
PKG-PTC-D	TENSIONER	POLY	3/8" to 3/4"	4
PKG-PTC	TENSIONER & CUTTER	POLY	3/8" to 3/4"	3
PKG-PS	SEALER	POLY	5/8"	5
PKG-PS-12	SEALER	POLY	1/2"	4
PKG-PS-D	SEALER	POLY	5/8"	4
PKG-PS-12L	SEALER	POLY	1/2"	5
PKG-PS-DL	SEALER	POLY	5/8"	5
PKG-TSCP-5	TENSIONER/SEALER/CUTTER	POLY	1/2"	12
PKG-TSCP-75	TENSIONER/SEALER/CUTTER	POLY	1/2" to 3/4"	8

## Polypropylene Strapping

The Polypropylene Strapping has a smooth uniform texture that resists splitting. The core size is 9" x 8". Absorbs shock loading. Works with models DBA-130, S-2001, and ASM-3123.

MODEL NUMBER	COLOR	STRAPPING WIDTH	FEET PER ROLL	CORE SIZE	TENSILE STRENGTH	WEIGHT (POUND)
ST-38-9X8-B <sup>®</sup>	BLACK	3/8"	12,900	9" x 8"	242 lb.	27
ST-38-9X8-YL <sup>®</sup>	YELLOW	3/8"	12,900	9" x 8"	242 lb.	30
ST-38-9X8-WH <sup>®</sup>	WHITE	3/8"	12,900	9" x 8"	242 lb.	30
ST-38-9X8-NA <sup>®</sup>	CLEAR	3/8"	12,900	9" x 8"	242 lb.	30
ST-12-9X8-B <sup>®</sup>	BLACK	1/2"	9,900	9" x 8"	308 lb.	27
ST-12-9X8-YL <sup>®</sup>	YELLOW	1/2"	9,900	9" x 8"	308 lb.	27
ST-12-9X8-WH <sup>®</sup>	WHITE	1/2"	9,900	9" x 8"	308 lb.	27
ST-12-9X8-NA <sup>®</sup>	CLEAR	1/2"	9,900	9" x 8"	308 lb.	27



WORKS WITH  
DBA-130, S-2001 & ASM-3123

## Propane Powered Shrink Wrap Heat Guns

The Propane Powered Shrink Wrap Heat Gun is lightweight and easy to use. It features an adjustable regulator so power is controllable to suit all types of film. The 26' hose comes with a swivel connector so it does not become twisted. An unlimited position stainless steel nozzle rotates 360° and remains cool so there is no risk of burns. Comes in its own storage case. Propane container and shrink wrap film is not included.

*Model SH-GUN-P-D* features a replaceable igniter (no-tools needed) behind the trigger plus a spare located in the hand guard. The tool box can support up to 265 pounds on the lid.

MODEL NUMBER	DESCRIPTION	TEMPERATURE SETTING	WEIGHT (POUND)
SH-GUN-P	PROPANE HEAT GUN	136,000-245,000 BTU/HR.	12
SH-GUN-P-D	DELUXE PROPANE HEAT GUN	153,000-260,000 BTU/HR.	13



model SH-GUN-P



model SH-GUN-P-D

## Electric Shrink Wrap Heat Gun 115V 1-PHASE STANDARD

The Electric Shrink Wrap Heat Gun is lightweight, easy to use and great for packaging small items. Ideal for use in shipping areas, parts departments, and printing plants. 115V, 1 phase AC power standard with a 5 foot cord and plug. Shrink wrap film not included.

MODEL NUMBER	DESCRIPTION	TEMPERATURE SETTING	VOLTAGE/ PHASE	WEIGHT (POUND)
SH-GUN-E <sup>®</sup>	ELECTRIC HEAT GUN	700° & 900°	115V / 1	4



model SH-GUN-E

## Impulse Bag Sealers 115V 1-PHASE STANDARD

The Impulse Bag Sealer is lightweight and ideal for packaging bulk mail, literature, catalogs, or small parts. The Sealer is easy to operate with a heat weld that closes each bag tight and offers variable temperature control. Poly bags are not included.

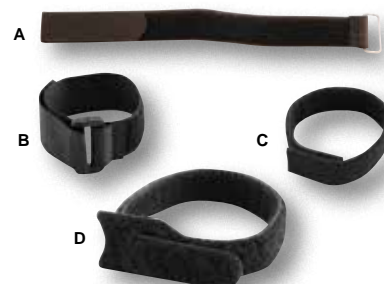
MODEL NUMBER	SEALING WIDTH	VOLTAGE/PHASE	WATTS	WEIGHT (POUND)
ISEAL-7T <sup>®</sup>	7½"	115V / 1	300	6
ISEAL-11T <sup>®</sup>	11½"	115V / 1	400	9
ISEAL-15T <sup>®</sup>	15½"	115V / 1	600	12

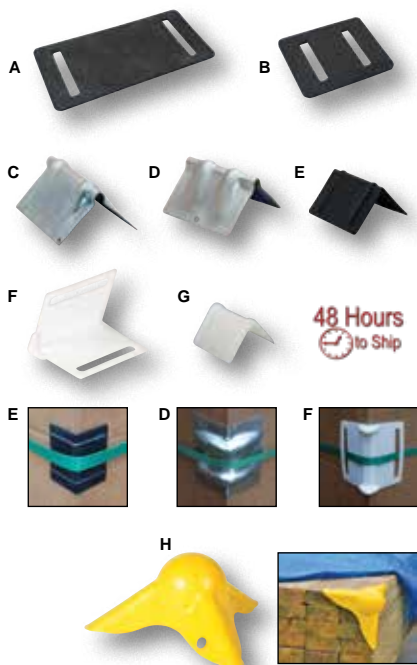


## Hook & Loop Straps 48 Hours to Ship

Hook & Loop Straps are quick and easy to fasten and unfasten. Reusable for a variety of applications.

TYPE	MODEL NUMBER	LOOP STYLE	SIZE (W x L)	BREAKING STRENGTH	PIECES PER PACKAGE	NET WEIGHT (PER PKG. LB.)
A	STRAPA-16 <sup>®</sup>	STEEL	1¼" x 16"	125 lb.	25	2
B	STRAPB-8 <sup>®</sup>	PLASTIC	1" x 8"	100 lb.	100	2
C	STRAPC-8 <sup>®</sup>	NONE	¾" x 8"	25 lb.	150	3
D	STRAPD-8 <sup>®</sup>	INTEGRAL	½" x 8"	25 lb.	200	3





## Edge Guards

**Rubber for cargo straps** - The Rubber Edge Guards stay in place even if cargo shifts. 1/4" thick.

**Steel for chain and cargo straps** - The Steel Edge Guards are great for sharp and rugged edges. Use on crates to increase sturdiness.

**Plastic and Nylon for carton straps and cargo straps** - These carton strap guards prevent plastic strapping from "cutting" into cardboard cartons. The cargo strap guard is an economical way to protect cargo and prevent strap damage.

**Tarp Corner Guard** - This guard is specifically made to protect tarp corners from possible rips or tears. Three-leg, molded plastic construction. Double-sided tape is included for adhesive purposes. Hole may be used to tack corner guard in place.

TYPE	MODEL NUMBER	CONSTRUCTION	SIZE (W x L)	PIECES PER PACKAGE	NET WEIGHT (PER PKG. LB.)
A	EDGE-R12 <sup>Ⓢ</sup>	RUBBER	5 3/4" x 12"	50	37
B	EDGE-R6 <sup>Ⓢ</sup>	RUBBER	5" x 6"	100	31
C	EDGE-S7 <sup>Ⓢ</sup>	STEEL	7 1/2" x 4 7/8"	10	15
D	EDGE-S6 <sup>Ⓢ</sup>	STEEL	6" x 4-3/8"	10	12
E	EDGE-P2 <sup>Ⓢ</sup>	PLASTIC	2 1/2" x 2 1/4"	1,000	28
E	EDGE-P2-24PK <sup>Ⓢ</sup>	PLASTIC	2 1/2" x 2 1/4"	24	5
F	EDGE-P5 <sup>Ⓢ</sup>	PLASTIC	5 3/16" x 4 1/4"	100	13
F	EDGE-N1 <sup>Ⓢ</sup>	NYLON	5 3/8" x 3 7/8"	100	21
F	EDGE-N1-12PK <sup>Ⓢ</sup>	NYLON	5 3/8" x 3 7/8"	12	3
G	EDGE-P1 <sup>Ⓢ</sup>	PLASTIC	1 1/8" x 1 1/2"	1,000	9
H	TARP-C <sup>Ⓢ</sup>	PLASTIC	5 1/2" LEGS	16	3



model CEP-3-W

48 Hours  
to Ship



model CEP-24-W



model CEP-C-W

## Cargo Protectors

Designed to protect product corners/edges from strapping damage. Angled cardboard configuration is 3" x 3" x 0.225" thickness. Works well with steel or plastic strap. Helps stabilize loads and is for use with stretch wrap. Corner protector folds and helps protect product corners. Corner protector measures 1 1/2" x 1 1/2" x 2"L.

MODEL NUMBER	TYPE	LENGTH	PIECES PER PACKAGE	NET WEIGHT (PER PKG. LB.)
CEP-3-W <sup>Ⓢ</sup>	EDGE	3"	200	22
CEP-24-W <sup>Ⓢ</sup>	EDGE	24"	50	48
CEP-36-W <sup>Ⓢ</sup>	EDGE	36"	50	67
CEP-48-W <sup>Ⓢ</sup>	EDGE	48"	50	89
CEP-C-W <sup>Ⓢ</sup>	CORNER	2"	300	20

## Shop Ticket Holders

Keep shop work orders, picking tickets, and similar documents clean and readable. Each ticket holder is sized for use with standard paper of 8 1/2" x 11". Taped and stitched heavy weight vinyl provides protection and durability. Packaged and sold in package quantities only.



MAGNETIC ZIP SEAL  
STANDARD

HANGING EYELET  
HANGING STRAP

MODEL NUMBER	STYLE	LOADING	QTY. PER PACKAGE	WEIGHT (POUND)
SHOPT-N <sup>Ⓢ</sup>	NEON	TOP	25	3
SHOPT-M <sup>Ⓢ</sup>	MAGNETIC	TOP	15	3
SHOPT-Z <sup>Ⓢ</sup>	ZIP SEAL	TOP	15	3
SHOPT-P <sup>Ⓢ</sup>	STANDARD	TOP	50	5
SHOPT-T <sup>Ⓢ</sup>	HANGING EYELET	TOP	25	3
SHOPT-S <sup>Ⓢ</sup>	HANGING EYELET	SIDE	25	3
SHOPT-HS <sup>Ⓢ</sup>	HANGING STRAP	TOP	15	2

## Tape Dispenser

The hand held Tape Dispenser is great for the distribution and packaging facilities. The plastic construction is designed for comfortable lightweight use during long periods of constant use. Simply fit tape unit into dispenser and pull over the roller opening. Once onto the roller, the user can dispense the tape smoothly to the required length. Fits 3" wide tape rolls.

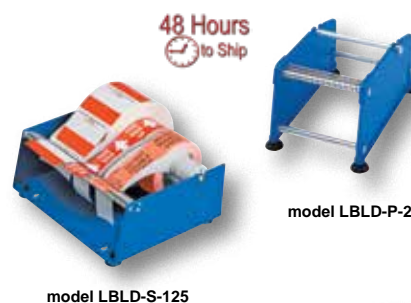


MODEL NUMBER	DESCRIPTION	WEIGHT (POUND)
VT-513 <sup>Ⓢ</sup>	3"W TAPE DISPENSER WITH RETRACTABLE BLADE	2

## Label Dispensers

Label Dispensers are ideal for shipping, receiving, and in-office use. The unit keeps labels in an organized, easily usable fashion for quick distributing. The dispenser is available in a plastic or steel construction. The lightweight, yet durable construction allows the dispenser to be easily moved from workstation to workstation, as well as endure frequent, longtime use.

MODEL NUMBER	CONSTRUCTION	LABEL WIDTH IT HOLDS	OVERALL SIZE (W x L x H)	WEIGHT (POUND)
LBLD-P-2 <sup>Ⓢ</sup>	PLASTIC	2"	3 <sup>1</sup> / <sub>8</sub> " x 7 <sup>7</sup> / <sub>8</sub> " x 4 <sup>5</sup> / <sub>16</sub> "	1
LBLD-P-4 <sup>Ⓢ</sup>	PLASTIC	4"	5 <sup>1</sup> / <sub>8</sub> " x 7 <sup>7</sup> / <sub>8</sub> " x 4 <sup>5</sup> / <sub>16</sub> "	1
LBLD-S-125 <sup>Ⓢ</sup>	STEEL	12 <sup>1</sup> / <sub>2</sub> "	13 <sup>3</sup> / <sub>4</sub> " x 10 <sup>5</sup> / <sub>8</sub> " x 6"	6



model LBLD-S-125

model LBLD-P-2

## Multi-Purpose Packaging Bench

Multi-Purpose Packaging Bench is great for all your packaging needs! Wooden surface is durable and soft so it will not damage your products. Includes elevated tower for holding two rolls of packaging paper or bubble wrap. Maximum roll width is 44". Maximum roll diameter is 20". Height of the three roll axes are 59", 47", and 16". Extra roll of material may be stored under table. Lower storage shelf for holding boxes, tape, tools, and other items. Steel construction.

MODEL NUMBER	TOP TABLE (W x L x H)	BOTTOM TABLE (W x L x H)	OVERALL HEIGHT	WEIGHT (POUND)
MPPB-4794	48" x 72" x 34"	24" x 48" x 16 <sup>1</sup> / <sub>2</sub> "	64 <sup>5</sup> / <sub>16</sub> "	283

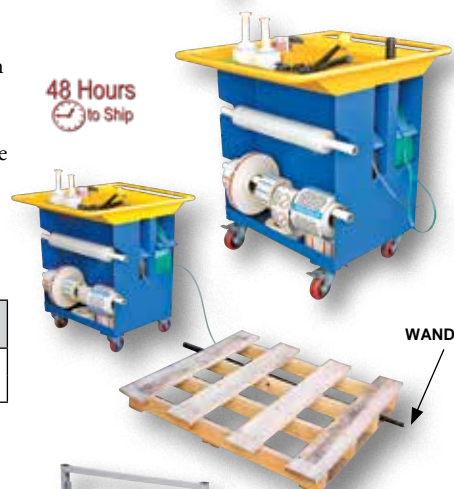
model MPPB-4794  
ships unassembled

## Multi-Task Packaging Cart

Minimize packaging time and costs by having wrapping and strapping components organized and readily available. Cart has dispensing ability for one steel and one poly strapping roll. Each strapping compartment includes a tensioner for controlled strap dispensing. Compartment doors also serve as ramps to easily roll strapping up into cart. Steel strapping compartment is 3<sup>1</sup>/<sub>4</sub>" wide. Poly strapping compartment is 6<sup>1</sup>/<sub>4</sub>" wide. Detachable pallet wand is included for use with poly strapping (max. 5/8" wide). Wand folds so it can be stored vertically in cart. The top of cart includes tray for storage for miscellaneous tools. Cart is portable with (2) two rigid and (2) two swivel locking 4" x 1<sup>1</sup>/<sub>4</sub>" poly-on-poly wheels and push handle. Steel construction with powder coat finish. *Model PKG-CART-A is model PKG-CART assembled.*

MODEL NUMBER	MAXIMUM ROLL DIAMETER	MAXIMUM ROLL/MATERIAL WIDTH	MAXIMUM STRAPPING DIAMETER	WEIGHT (POUND)
PKG-CART <sup>Ⓢ</sup>	11"	26"	22"	239
PKG-CART-A <sup>Ⓢ</sup>	11"	26"	22"	239

ADDITIONAL PALLET WAND, MODEL PKG-WAND



## Paper Dispenser Stands

Designed to conveniently hold rolls of paper and allows for easy horizontal dispensing. Choose from either double-tier or triple-tier design. Holds rolls of paper up to 9" in diameter. Steel construction with painted finish. Ships knocked down in cardboard box.

MODEL NUMBER	ROLL WIDTH	TIERS	OVERALL SIZE (W x H)	NET WEIGHT (POUND)
PDS-2-24 <sup>Ⓢ</sup>	24"	2	28 <sup>3</sup> / <sub>4</sub> " x 27 <sup>3</sup> / <sub>8</sub> "	17
PDS-2-30 <sup>Ⓢ</sup>	30"	2	34 <sup>1</sup> / <sub>4</sub> " x 27 <sup>3</sup> / <sub>8</sub> "	21
PDS-2-36 <sup>Ⓢ</sup>	36"	2	40 <sup>3</sup> / <sub>4</sub> " x 27 <sup>3</sup> / <sub>8</sub> "	23
PDS-2-48 <sup>Ⓢ</sup>	48"	2	53" x 27 <sup>3</sup> / <sub>8</sub> "	24
PDS-3-24 <sup>Ⓢ</sup>	24"	3	28 <sup>3</sup> / <sub>4</sub> " x 38 <sup>1</sup> / <sub>2</sub> "	27
PDS-3-30 <sup>Ⓢ</sup>	30"	3	34 <sup>1</sup> / <sub>4</sub> " x 38 <sup>1</sup> / <sub>2</sub> "	28
PDS-3-36 <sup>Ⓢ</sup>	36"	3	40 <sup>3</sup> / <sub>4</sub> " x 38 <sup>1</sup> / <sub>2</sub> "	30
PDS-3-48 <sup>Ⓢ</sup>	48"	3	53" x 38 <sup>1</sup> / <sub>2</sub> "	42



model PDS-3-24

## Roll Dollies

The unique portable Roll Dolly is designed for moving, holding, and dispensing rolls of material right where they are needed. Integral turntable easily rotates on ball bearings to allow for dispensing. Upright post detaches to allow for easy loading of larger rolls. Unit rolls smoothly on (4) four swivel total locking 3" x 1<sup>1</sup>/<sub>4</sub>" polyurethane casters. Steel construction with powder coat finish. The Deluxe Roll Dolly includes integral cutting blade for quick and easy cutting of materials. Optional tool tray mounts to the top of the post to keep tools at your fingertips.

MODEL NUMBER	POST DIAMETER	MAXIMUM ROLL HEIGHT	MAXIMUM ROLL DIAMETER	UNIFORM CAPACITY	WEIGHT (POUND)
ROLL-D	1 <sup>5</sup> / <sub>16</sub> "	61"	33"	125 lb.	36
ROLL-D-DLX <sup>Ⓢ</sup>	1"	42"	30"	400 lb.	92

OPTIONAL TOOL TRAY, MODEL ROLL-D-TT



model ROLL-D

model ROLL-D-DLX



## Shrink Wrap Cart

The shrink wrap cart is a major asset in the packaging and shipping departments. A strong overall capacity and construction permits the user to transport large amount of shrink wrap from area to area, saving both time and energy. The cart rolls on swivel and rigid casters with brakes for smooth transferring and safe keeping on unlevelled surfaces. A powder coat finish is included for added toughness in harsh conditions.

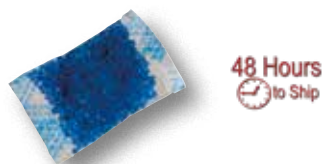
MODEL NUMBER	OVERALL SIZE (W x L x H)	MAXIMUM ROLL WIDTH	ROLL CAPACITY	ROLL CAPACITY EACH	UNIFORM CAPACITY	WEIGHT (POUND)
MSW-72-3	40 <sup>15</sup> / <sub>16</sub> " x 80" x 46 <sup>13</sup> / <sub>16</sub> "	72"	3	150 lb.	450 lb.	239



## Polypropylene Woven Parts/Sand Bags

Choose woven polypropylene bags for the toughest packaging applications. Each bag has a tie string. Manufactured from high puncture, tear and water resistant 2 mil polypropylene. Bags are reusable, economical, durable, flexible, and sturdy.

MODEL NUMBER	SIZE (W x L)	CAPACITY	COLOR	QUANTITY PER PACKAGE	NET WEIGHT PER PKG. (LB.)
PWB-68-B	6" x 8"	N/A	BLUE	200	4
PWB-812-B	8" x 12"	N/A	BLUE	200	6
PWB-68-Y	6" x 8"	N/A	YELLOW	200	4
PWB-812-Y	8" x 12"	N/A	YELLOW	200	6
PWB-68-W	6" x 8"	N/A	WHITE	200	4
PWB-812-W	8" x 12"	N/A	WHITE	200	6
PWB-SAND-W	14 <sup>3</sup> / <sub>4</sub> " x 26"	56 lb.	WHITE	200	12



## Blue Silica Gel - absorb shipping container moisture

Blue Silica Gel absorbs shipping container moisture. The blue silica gel is in clear packets with unique color changing characteristics. Color is blue when dry and red when saturated. Ships in sealed cartons.

MODEL NUMBER	INDIVIDUAL PACKET SIZE (W x L)	INDIVIDUAL PACKET WEIGHT	PACKAGES PER CARTON	NET WEIGHT PER PKG. (LB.)
BSG-2G	1.18" x 1.77"	2 grams	3000	15
BSG-5G	1.85" x 2.50"	5 grams	1250	15
BSG-10G	1.85" x 2.75"	10 grams	600	15



## Pallet Washing Cabinet & Optional Pressure Washer

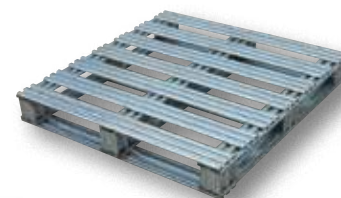
The stainless steel Pallet Washing Cabinet makes it easy to rinse, clean, and remove debris that can accumulate on plastic pallets. Constructed entirely of stainless steel, simply plug in your existing pressure washing hose using the snap connector provided. Minimal installation requirements include a connection to a minimum of 6GPM @2500 PSI. With no moving parts, this washer is perfect for low volume applications involving slightly soiled pallets. Optional Electric Pressure Washer available, contact factory.

MODEL NUMBER	OPENING PALLET SIZE	RESERVOIR (GALLONS)	OVERALL DIMENSIONS (W x L x H)	WEIGHT (POUND)
PPW-748	7"W x 48"H	10	39" x 39" x 76"	395

## Steel Pallets with Hot-Dipped Galvanized Finish

Heavy-duty non-reversible welded steel pallets. Usable fork openings are  $\frac{3}{8}$ " high. Model SPL-3636 has 4-way entry allowing access for both fork and pallet trucks. Models SPL-4048, SPL-4248 and SPL-4848 have 2-way entry and allow access for fork trucks only. Hot-dipped galvanized finish offers rust resistance.

MODEL NUMBER	OVERALL SIZE (W x D x H)	UNIFORM SUPPORTED WEIGHT CAPACITY			WEIGHT (POUND)
		FLOOR (STATIC)	FORK (DYNAMIC)	UNSUPPORTED PALLET RACK	
<b>SPL-3636</b> Ⓢ	36" x 36" x 4 $\frac{3}{4}$ "	8,000 lb.	4,000 lb.	2,200 lb.	80
<b>SPL-4048</b> Ⓢ	40" x 48" x 4 $\frac{3}{4}$ "	8,000 lb.	4,000 lb.	2,200 lb.	100
<b>SPL-4248</b> Ⓢ	42" x 48" x 4 $\frac{3}{4}$ "	8,000 lb.	4,000 lb.	2,200 lb.	103
<b>SPL-4848</b> Ⓢ	48" x 48" x 4 $\frac{3}{4}$ "	8,000 lb.	4,000 lb.	2,200 lb.	114



model SPL-3636

48 Hours  
to Ship

## Heavy Duty Solid Deck Steel Pallet

The heavy-duty non-reversible welded steel Solid Deck Pallet are ideal to transport and store products within your facility and/or to transport them between facilities. Galvanized finish for rust resistance. Usable fork pockets are  $8\frac{1}{2}$ "W x  $2\frac{1}{2}$ "H. Open end usable size is 35"W x  $3\frac{3}{4}$ "H.

MODEL NUMBER	OVERALL SIZE (W x D x H)	UNIFORM SUPPORTED WEIGHT CAPACITY			WEIGHT (POUND)
		FLOOR (STATIC)	FORK (DYNAMIC)	UNSUPPORTED PALLET RACK	
<b>SDSP-4048</b> Ⓢ	47" x 39 $\frac{1}{2}$ " x 6 $\frac{1}{2}$ "	4,000 lb.	3,500 lb.	2,500 lb.	118



model SDSP-4048

48 Hours  
to Ship

## Galvanized Welded Wire Pallets

Galvanized Welded Wire Pallets will stand up to heavy-duty use. Design allows for stacking. Four-way access with pallet truck, and fork trucks. Open decking features 2" x 4" grid pattern. Usable height on open end is 3". Usable height on stringer end is  $2\frac{3}{4}$ ". Understructure supports are made from 12 gauge steel. Decking is made from welded steel wire. Welded steel construction with galvanized finish.

MODEL NUMBER	OVERALL SIZE (W x D x H)	UNIFORM SUPPORTED WEIGHT CAPACITY			WEIGHT (POUND)
		FLOOR (STATIC)	FORK (DYNAMIC)	UNSUPPORTED PALLET RACK	
<b>WMP-4048</b> Ⓢ	40" x 48" x 4"	4,000 lb.	2,500 lb.	NOT RATED	84
<b>WMP-4848</b> Ⓢ	48" x 48" x 4"	4,000 lb.	2,500 lb.	NOT RATED	98



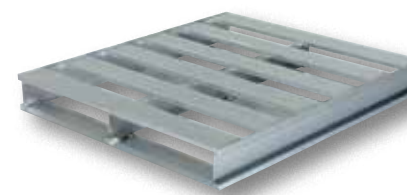
model WMP-4048

48 Hours  
to Ship

## Aluminum Pallets

This is the pallet the food and chemical industries have always wanted. Easy to clean with a power washer. Stands up to high-power steam, brushes, or pads. Features a non-skid surface for easy transportation of all products. Top boards are  $\frac{4}{8}$ " wide. Available in two-way and four-way entry for pallet and fork truck use. Durable and re-usable. Heavy-duty welded aluminum construction.

MODEL NUMBER	OVERALL SIZE (W x D x H)	UNIFORM SUPPORTED WEIGHT CAPACITY			WEIGHT (POUND)
		FLOOR (STATIC)	FORK (DYNAMIC)	UNSUPPORTED PALLET RACK	
2-WAY ENTRY					
AP-4048	40⅛" x 48" x 6"	6,000 lb.	4,000 lb.	6,000 lb.	84
AP-4248	42⅛" x 48" x 6"	6,000 lb.	4,000 lb.	6,000 lb.	86
AP-4848	48⅛" x 48" x 6"	6,000 lb.	4,000 lb.	6,000 lb.	89
4-WAY ENTRY					
AP-4048-4W	40" x 47⅞" x 5 1⁄16"	6,000 lb.	4,000 lb.	4,000 lb.	85
AP-4248-4W	42" x 47⅞" x 5 1⁄16"	6,000 lb.	4,000 lb.	4,000 lb.	87
AP-4848-4W	47⅞" x 47⅞" x 5 1⁄16"	6,000 lb.	4,000 lb.	4,000 lb.	90
SKID BOTTOM					
AP-4048-SB	40" x 47⅞" x 5 1⁄16"	6,000 lb.	4,000 lb.	4,000 lb.	85
AP-4248-SB	42" x 47⅞" x 5 1⁄16"	6,000 lb.	4,000 lb.	4,000 lb.	87
AP-4848-SB	47⅞" x 47⅞" x 5 1⁄16"	6,000 lb.	4,000 lb.	4,000 lb.	90



model AP-4248

48 Hours  
to Ship

model MULTI-C



model CBC-4048-S



model CBC-4048-M

## Multi-Height Container

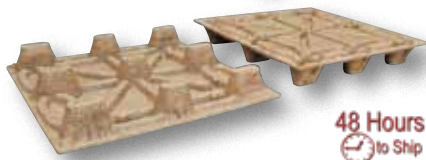
Increase flexibility and accessibility with our Multi-Height Container. As the user loads or unloads the height can be increased or decreased. Includes one pallet base (with four way entry) and four side sections. Pallet base measures  $47\frac{3}{16}$ "W x  $31\frac{3}{8}$ "L x  $5\frac{7}{8}$ "H with fork openings:  $8\frac{5}{16}$ "W x  $3\frac{3}{8}$ "H on  $14\frac{1}{8}$ " centers and  $13\frac{3}{8}$ "W x  $3\frac{3}{8}$ "H on 19" centers. Polyethylene construction with steel corner hinges. Multiple units are not stackable.

MODEL NUMBER	OVERALL SIZE (W x D x H)	FOLDED SECTION (W x D x H)	UNIFORM CAPACITY	WEIGHT (POUND)
MULTI-C	47¼" x 31½" x 37½"	74½" x 8¾" x 2¾"	2,500 lb.	126

## Collapsible Bulk Storage Containers

These rugged containers will fold flat for storage when not needed. Overall height when folded flat is only 11". Two-way fork entry openings are  $33\frac{3}{4}$ "W x  $3\frac{3}{4}$ "H. Uniform volume capacity is 26 cu-ft. Multiple units may be stacked up to three (3) high. Resistant to extreme high and low temperatures. Durable and easy to clean. Manufactured from HDPE.

MODEL NUMBER	DESCRIPTION	OVERALL SIZE (W x L x H)	UNIFORM CAPACITY			WEIGHT (LB.)
			STATIC	DYNAMIC	STACKING	
CBC-4048-S	SOLID SIDES	46" x 46" x 31"	6,000 lb.	2,000 lb.	1,000 lb.	142
CBC-4048-M	MESH SIDES	46" x 46" x 31"	6,000 lb.	2,000 lb.	1,000 lb.	144

48 Hours  
to Ship48 Hours  
to Ship

## Recycled Nestable Presswood Pallets

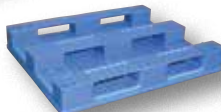
Nestable presswood pallets are great for hundreds of applications. Special nestable design allows for stacking - 50 pallets only 86" high. Meet ISPM 15 export specifications. Rounded corners increase life expectancy. Lightweight design weighs 60% less than conventional wood pallets. Does not contain any nails or staples and is manufactured from recycled wood, which is environmentally responsible.

MODEL NUMBER	OVERALL SIZE (W x D x H)	UNIFORM SUPPORTED WEIGHT CAPACITY			WEIGHT (POUND)
		FLOOR (STATIC)	FORK (DYNAMIC)	UNSUPPORTED PALLET RACK	
PWP-4840	48" x 40" x 5.6"	2,000 lb.	NOT RATED	NOT RATED	81

## Plastic Pallet/Skids

This innovative design unites two essential product features; capacity and versatility. Pallet/Skid provides 4-way entry, 2-way by pallet truck and 4-way by a fork truck. The fork opening is  $11\frac{1}{8}$ "W x  $3\frac{1}{4}$ "H. The skid opening is  $10\frac{1}{2}$ "W x  $3\frac{3}{4}$ "H. Features anti-slide grommets which prevent the pallets from sliding off the forks and each other during transit.

MODEL NUMBER	OVERALL SIZE (W x L x H)	UNIFORM SUPPORTED WEIGHT CAPACITY			WEIGHT (POUND)
		FLOOR (STATIC)	FORK (DYNAMIC)	UNSUPPORTED PALLET RACK	
PLPS-4840	47 1/8" x 39 1/4" x 6 1/2"	8,800 lb.	2,200 lb.	1,760 lb.	45
SAME AS ABOVE EXCEPT RACKABLE & SOLID TOP (HYGIENIC)					
PLPS-H	39 1/2" x 47 1/4" x 6 1/2"	8,800 lb.	3,300 lb.	3,300 lb.	52
SOLID TOP & BOTTOM (WASH-DOWN)					
PLPS-WD	47" x 39" x 6"	8,800 lb.	3,300 lb.	NOT RATED	40

PALLET/SKID  
model PLPS-4840NON-SKID GROMMET  
ON PLPS-4840WASHDOWN  
model PLPS-WD48 Hours  
to Ship

## Plastic Pallets and Skids

Stackable for efficient storage. Made of high-density virgin polyethylene for longer life. Pallets are maintenance free and safer to handle than wooden pallets. Feature (4) four-way entry. Serrated deck with holes for drainage. Plastic pallets are ideal for export, pharmaceutical, medical, and food applications. Model PLPS-4840-9L is a hygienic easy to clean solid deck skid.



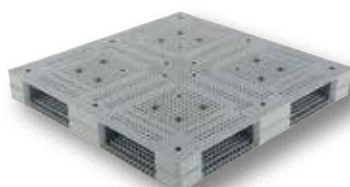
FOR UNSUPPORTED RACK  
model PLPB-4840



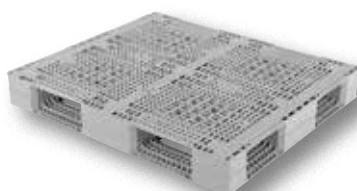
STANDARD DUTY  
model PLPG-4848



series PLP2  
AVAILABLE IN GREEN, BLUE, ORANGE,  
BLACK, YELLOW, AND RED



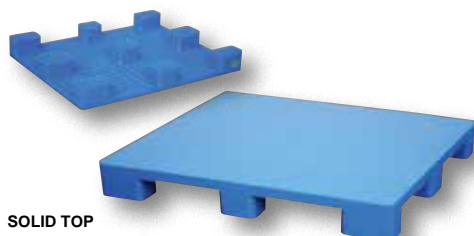
HEAVY DUTY  
model PLPG-4848-HD



FOR UNSUPPORTED RACK  
model PLPR-4840



FOR UNSUPPORTED RACK  
model PLPR-4840-ST



SOLID TOP

SANITARY / EASY WASH  
model PLPS-4840-9L



STACKABLE PALLET WITH LIP  
model PLPG-4840-LIP



PLASTIC SKID 48" x 48"  
model PLPS-4848



PLASTIC SKID 40" x 48"  
model SKID-20



MODEL NUMBER	OVERALL SIZE (W x L x H)	UNIFORMED SUPPORTED WEIGHT CAPACITY (LB.)			FORK OPENINGS (W x H)	COLOR	WEIGHT (POUND)
		FLOOR (STATIC)	FORK (DYNAMIC)	UNSUPPORTED PALLET RACK			
PLP2-4840-GREEN <sup>Ⓢ</sup>	48" x 40" x 6"	6,600 lb.	2,200 lb.	NOT RATED	10 <sup>1</sup> / <sub>4</sub> " x 3 <sup>3</sup> / <sub>4</sub> "	GREEN	30
PLP2-4840-BLUE <sup>Ⓢ</sup>	48" x 40" x 6"	6,600 lb.	2,200 lb.	NOT RATED	10 <sup>1</sup> / <sub>4</sub> " x 3 <sup>3</sup> / <sub>4</sub> "	BLUE	30
PLP2-4840-YELLOW <sup>Ⓢ</sup>	48" x 40" x 6"	6,600 lb.	2,200 lb.	NOT RATED	10 <sup>1</sup> / <sub>4</sub> " x 3 <sup>3</sup> / <sub>4</sub> "	YELLOW	30
PLP2-4840-ORANGE <sup>Ⓢ</sup>	48" x 40" x 6"	6,600 lb.	2,200 lb.	NOT RATED	10 <sup>1</sup> / <sub>4</sub> " x 3 <sup>3</sup> / <sub>4</sub> "	ORANGE	30
PLP2-4840-BLACK <sup>Ⓢ</sup>	48" x 40" x 6"	6,600 lb.	2,200 lb.	NOT RATED	10 <sup>1</sup> / <sub>4</sub> " x 3 <sup>3</sup> / <sub>4</sub> "	BLACK	30
PLP2-4840-RED <sup>Ⓢ</sup>	48" x 40" x 6"	6,600 lb.	2,200 lb.	NOT RATED	10 <sup>1</sup> / <sub>4</sub> " x 3 <sup>3</sup> / <sub>4</sub> "	RED	30
PLPG-4848 <sup>Ⓢ</sup>	48" x 48" x 6"	6,600 lb.	2,200 lb.	NOT RATED	10 <sup>11</sup> / <sub>16</sub> " x 3 <sup>1</sup> / <sub>2</sub> "	GRAY	55
PLPG-4848-HD <sup>Ⓢ</sup>	48" x 48" x 6"	8,800 lb.	2,200 lb.	NOT RATED	12 <sup>1</sup> / <sub>2</sub> " x 3 <sup>1</sup> / <sub>2</sub> "	GRAY	70
PLPB-4840 <sup>Ⓢ</sup>	47 <sup>1</sup> / <sub>4</sub> " x 39 <sup>1</sup> / <sub>2</sub> " x 6"	8,800 lb.	2,200 lb.	1,320 lb.	9 <sup>13</sup> / <sub>16</sub> " x 3 <sup>1</sup> / <sub>2</sub> "	BLACK	45
PLPR-4840 <sup>Ⓢ</sup>	48" x 40" x 6"	4,400 lb.	3,960 lb.	2,200 lb.	8 <sup>3</sup> / <sub>4</sub> " x 3 <sup>1</sup> / <sub>4</sub> "	GRAY	55
PLPR-4840-ST <sup>Ⓢ</sup> (Rackable)	40" x 48" x 6 <sup>1</sup> / <sub>2</sub> "	13,200 lb.	3,960 lb.	3,300 lb.	9 <sup>3</sup> / <sub>4</sub> " x 4 <sup>1</sup> / <sub>2</sub> " 11 <sup>3</sup> / <sub>8</sub> " x 3"	BLUE	48
PLPS-4840-9L <sup>Ⓢ</sup> (Hygienic)	40" x 48" x 5 <sup>1</sup> / <sub>2</sub> "	8,800 lb.	2,200 lb.	NOT RATED	13" x 3 <sup>1</sup> / <sub>2</sub> " 12 <sup>1</sup> / <sub>8</sub> " x 3 <sup>1</sup> / <sub>2</sub> "	BLUE	34
PLPG-4840-LIP <sup>Ⓢ</sup>	40" x 48" x 7 <sup>1</sup> / <sub>4</sub> "	8,800 lb.	2,200 lb.	NOT RATED	10" x 4"	GRAY	30
PLPS-4848 <sup>Ⓢ</sup>	48" x 48" x 5"	4,400 lb.	1,650 lb.	NOT RATED	11 <sup>3</sup> / <sub>4</sub> " x 3 <sup>1</sup> / <sub>2</sub> "	GRAY	40
SKID-20 <sup>Ⓢ</sup>	48" x 40" x 5 <sup>1</sup> / <sub>2</sub> "	3,300 lb.	660 lb.	NOT RATED	12 <sup>9</sup> / <sub>16</sub> " x 3 <sup>3</sup> / <sub>4</sub> "	RED	20

\*NOT PALLET TRUCK USABLE (NOT SHOWN)

## HEAVY DUTY KINGPIN CAROUSEL SURVEY SHEET - CA-KP

## CUSTOMER INFORMATION

CONTACT: \_\_\_\_\_  
 COMPANY: \_\_\_\_\_  
 PHONE: \_\_\_\_\_  
 EMAIL: \_\_\_\_\_



www.vestil.com  
 info@vestil.com

VESTIL  
 MANUFACTURING  
 P.O. BOX 507  
 ANGOLA, IN 46703

Ph: 260-665-7586  
 Fax: 260-665-1339

Is this a repeat quote or repeat order? If yes, please indicate.  
 Prev. Quote No.: \_\_\_\_\_ Prev. Order No.: \_\_\_\_\_

## UNIFORM CAPACITY:

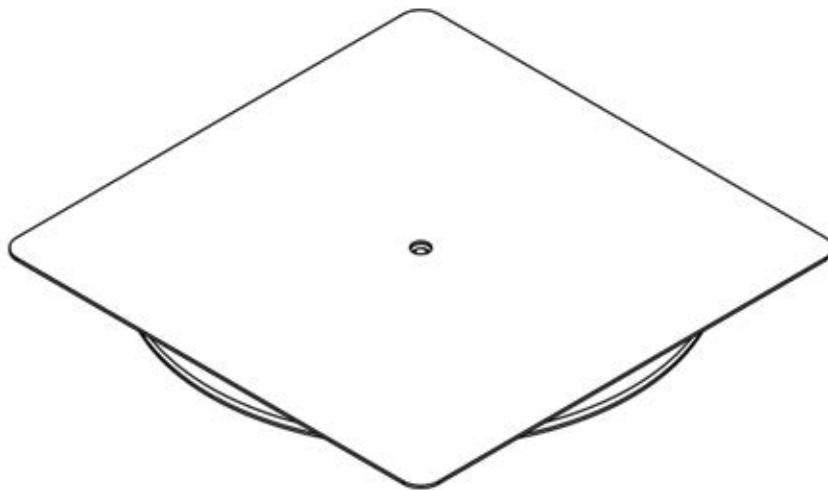
\*NOTE: STARTING FORCE TO ROTATE IS  
 APPROX. 2% OF TOTAL WEIGHT

## TOP PLATE OPTIONS

SQUARE: \_\_\_\_\_ X \_\_\_\_\_  
 OR  
 ROUND Ø: \_\_\_\_\_

TREADPLATE: \_\_\_\_\_  
 OR  
 SMOOTH: \_\_\_\_\_

CORNER GUARDS: \_\_\_\_\_  
 (PLEASE SPECIFY HEIGHT & LENGTH)



## DETENT/BRAKE OPTIONS:

CA-HOD: HAND OPERATED DETENT \_\_\_\_\_

\*\*CA-FTK: FOOT OPERATED DETENT \_\_\_\_\_

\*\*CA-HBK: MANUAL HAND BRAKE \_\_\_\_\_

\*\*THESE OPTIONS ARE ONLY AVAILABLE WITH ROUND TOP  
 PLATES

## SPECIAL HEIGHT REQUIREMENTS:

HEIGHT: \_\_\_\_\_

## PRODUCT INFO:

## LOAD / PRODUCT TYPE:

BASKET / PALLET / GAYLORD / SKID

OTHER: \_\_\_\_\_

## PRODUCT SIZE:

LENGTH: \_\_\_\_\_

WIDTH: \_\_\_\_\_

HEIGHT: \_\_\_\_\_

DOES CONTAINER HAVE FEET? \_\_\_\_\_

DOES CONTAINER HAVE DROP SIDES?

YES / NO

## APPLICATION / LOADING INFORMATION:

\_\_\_\_\_  
 \_\_\_\_\_  
 \_\_\_\_\_  
 \_\_\_\_\_

## ADDITIONAL NOTES:

\_\_\_\_\_  
 \_\_\_\_\_  
 \_\_\_\_\_

## QUOTE OPTIONS:

\_\_\_\_\_ EXACTLY AS SPECIFIED \_\_\_\_\_ CHEAPEST / CLOSEST TO VESTIL STANDARD

\_\_\_\_\_ QUICKEST TO SHIP

REQUESTED DELIVERY DATE: \_\_\_\_\_

\*All options may not be available on all models