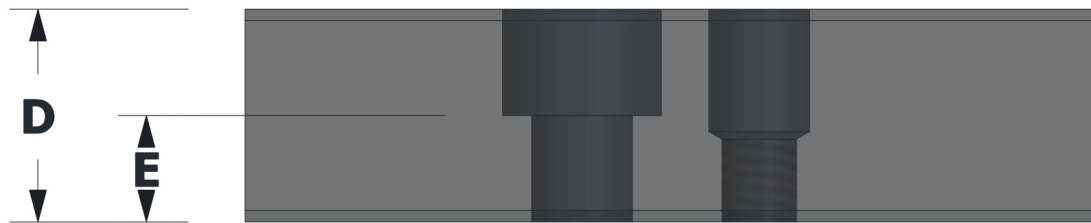
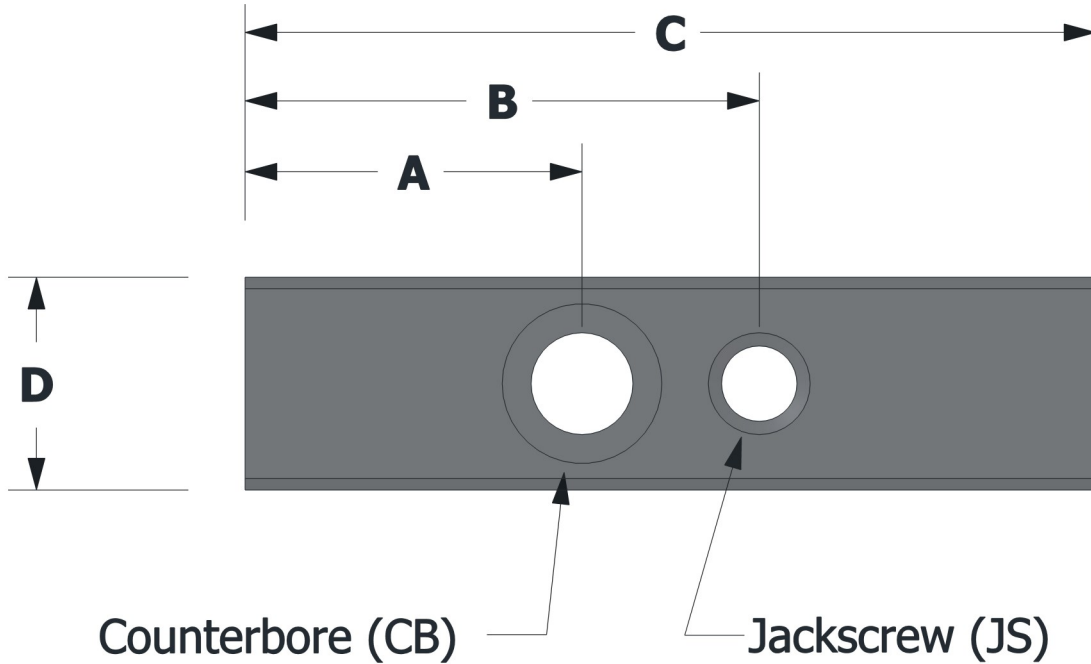


KEYS—METRIC



Part Number	A	B	C	D	E	CB	JS
AT500K-M-1.25	0.375	0.875	1.25	0.5	0.2	M6 SHCS	M6
AT750K-M-2.00	0.688	1.331	2	0.75	0.38	M8 SHCS	M8
AT750K-M-3.00	1.188	1.831	3	0.75	0.38	M8 SHCS	M8
AT750K-M-5.00	2.188	2.831	5	0.75	0.38	M8 SHCS	M8
AT750K-M-7.00	3.188	3.831	7	0.75	0.38	M8 SHCS	M8
AT100K-M-3.00	1.125	1.875	3	1	0.5	M10 SHCS	M10
AT100K-M-5.00	2.125	2.875	5	1	0.5	M10 SHCS	M10
AT100K-M-7.00	3.125	3.875	7	1	0.5	M10 SHCS	M10

*Cold Rolled Steel