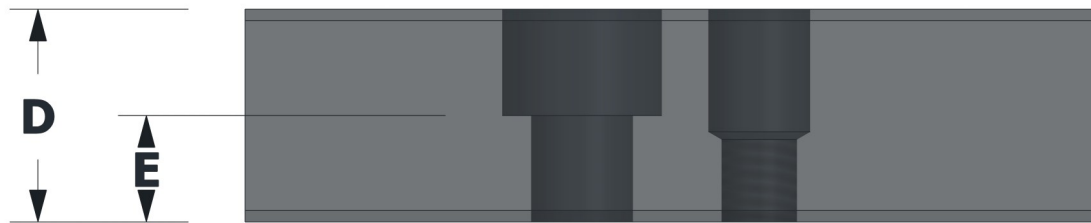
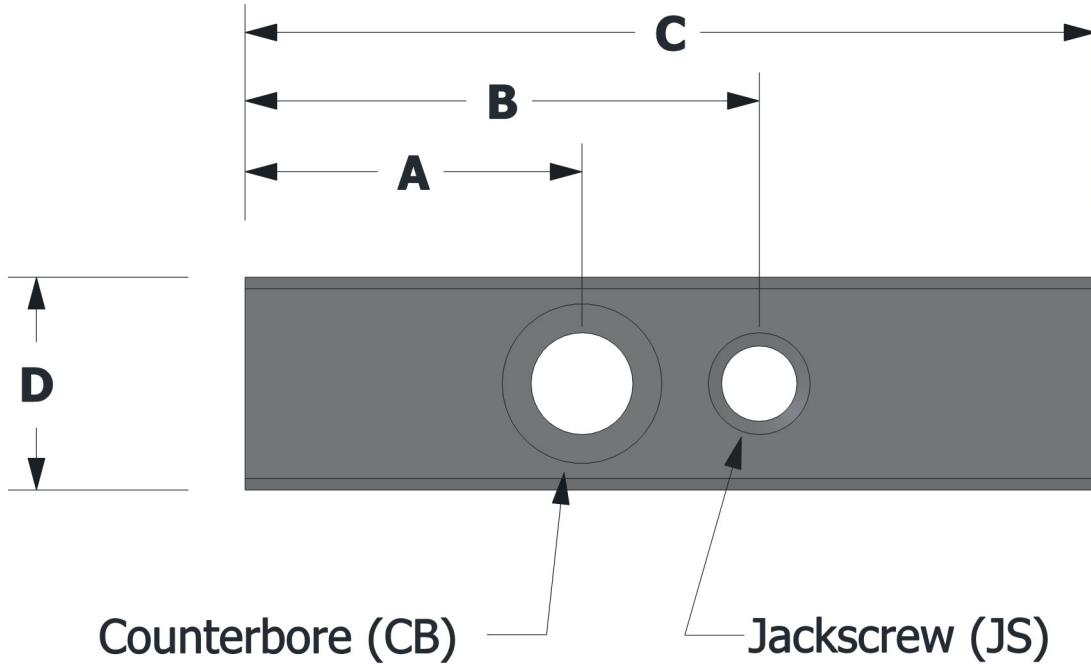


### KEYS—ENGLISH



Part Number	A	B	C	D	E	CB	JS
AT500K-1.25	0.375	0.875	1.25	0.50	0.20	1/4 SHCS	1/4-20
AT750K-2.00	0.688	1.331	2.00	0.75	0.38	5/16 SHCS	5/16-18
AT750K-3.00	1.188	1.831	3.00	0.75	0.38	5/16 SHCS	5/16-18
AT750K-5.00	2.188	2.831	5.00	0.75	0.38	5/16 SHCS	5/16-18
AT750K-7.00	3.188	3.831	7.00	0.75	0.38	5/16 SHCS	5/16-18
AT100K-3.00	1.125	1.875	3.00	1.00	0.50	3/8 SHCS	3/8-16
AT100K-5.00	2.125	2.875	5.00	1.00	0.50	3/8 SHCS	3/8-16
AT100K-7.00	3.125	3.875	7.00	1.00	0.50	3/8 SHCS	3/8-16

\*Cold Rolled Steel