

SF-1

CNC COILING MACHINE FOR ULTRA FINE WIRE

Featuring the
Mec New Operation
system, this new CNC
coiling machine is user-friendly
and supports multi-functional
production management



 **ORIIMEC**

ORIIMEC CORPORATION OF AMERICA
1840 AIRPORT EXCHANGE BLVD. #200
ERLANGER, KY 41018 USA
1.888.746.3320
www.oriimec.com


WWW.ORIIMEC.COM

SF-1

CNC COILING MACHINE FOR ULTRA FINE WIRE

FEATURES

- Reviewed all mechanisms: Feed axis, each slide, adjustment mechanisms, and achieved high resolution of 1/1000mm for each operation.
- With feed rolls of 16mm in diameter and ultimate short wire guides of 6mm in length, products with ultra fine wire of 20 μm or less in diameter and also tight I/D index coiling can be formed stably.
- Fitting mechanism is standard that wire guides are fit based on feed roll position. Moving fitting position of newly designed arbor and pitch tool unit makes an adjustment of arbor position for wire guide.
- Unchanging columns on program screen for all axis enables operator to grasp program flow and each axis status by left-right scrolling.
- Necessary data entered in the high precision auto program are converted to form desired spring parts such as standard cylindrical spring and conical spring.
- Easy-to-operate programs for gaging, coil end control, input/output, counter and others are set up on purpose-built screen separating from main program.

MACHINE SPECIFICATIONS

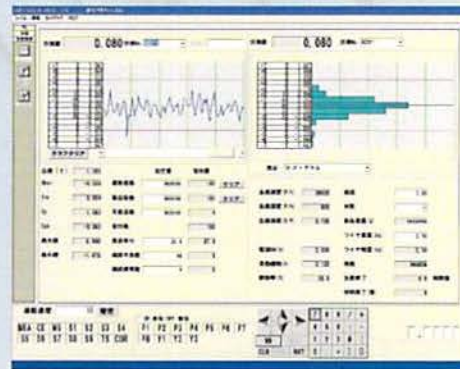
Wire Diameter	0.016 - 0.1mm (0.0006 - 0.003")
Max. Outer Diameter	2mm (0.078")
Feed Axis Resolution	0.001mm
Cut Axis Resolution	0.001"
Pitch Axis Resolution	0.0001mm
Point Axis Resolution	0.0001mm
Solenoid Valves	4 PCS (8 PCS available at max.)
Air requirements	Max 0.5 MPa
Power source	200VAC 3-phase, 15A
Weight	400kg (882 lbs)
Control Device	
Max. 9-axis controllable by OS	Windows XP
Display	17" TFT Color LCD
External memory	USB thumb drive
Service Temperature	0°-40°C

Specifications subject to change without notice.

MOTOR SENSOR SYSTEM

Comes equipped with patent-pending "MSD-1" that measures free length using contact sensor for positioning servomotor. 1/1000mm that is too small unit to be measured by conventional device can be measured by this system, and results will be displayed with graph that can be used for correction and production control.

PRODUCTION CONTROL SCREEN



Line graph, histogram, standard deviation, process capacity, production quantity, speed, remaining amount of wire material and other specifications are displayed in real time.

