

- One-piece compact design
- Bronze graphite-plugged bushing
- Easily replaces lower quality retainers
- Better handling of side load
- Now available in five diameters



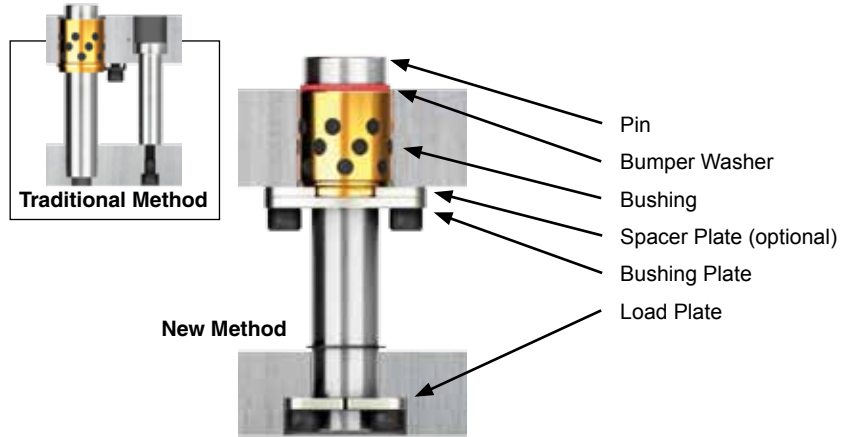
Guided Retainers

SUPERIOR GUIDANCE & RETENTION

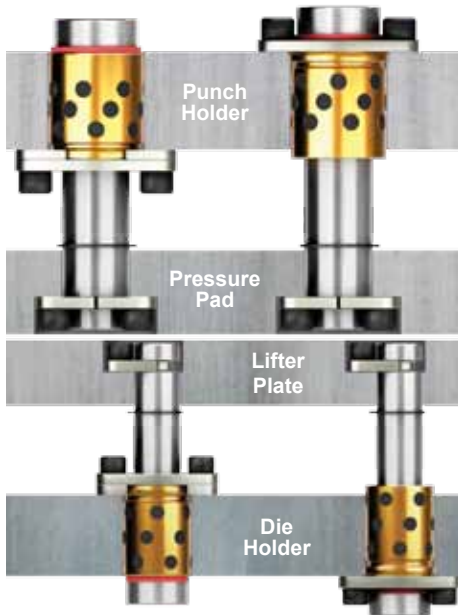
Lamina Guided Retainers

Lamina Guided Retainers are precision guide pin & bushing/retainer assemblies that occupy much less space in the die than traditional pin and retainer combinations.

Guide and retain the pad or stripper plate in progressive stamping dies, or use on stock rails and stock dies with a lifter plate. Lamina Guided Retainers reduce machining cost and save space within your die.



Versatile Mounting



Lamina's advanced design offers the following features:

Tight Assembly Tolerances

- Superior guiding, with the same assembly clearance as traditional pins and bushings
- Greater positional accuracy

Strength at the Pad

- Accomplished with steel load plates
- No SHCS threaded into the pin

Strength at the Pin Head

- Unique one piece construction

Bronze Graphite-Plugged Bushing

- Longer life
- Self lubricating
- No galling

Greater Shear Load capabilities from axial loads and side loads due to pin engagement in pad and hardened steel load plates.

Optional Mounting of Bushing

- Can be mounted on either side of the plate for additional clearance, solving design issues
- Greater strength

Lamina Guided Retainers are available in 5 pin diameters, ranging in 1/8 inch increment lengths from 3.50 to 16.00 inches. Two bushing lengths are offered for each pin diameter.

*U.S. Patent No. 11,504,759
International Patents Pending

To configure and download CAD data:

daytonlamina.com/guided-retainers

Application Recommendations

This table is for reference only. Design considerations should be based on your own calculations.

Table is based on average speed of around 25-35 SPM.

At least three units should be used, and they should be equally spaced and not in line.

If there is excessive side load on the pad, heel blocks should be added.

Pin Dia.	Product Code	Travel (in)	Pad Weight (lbs) per Unit
1.00	LGA_100	< 2	22
		2 - 3	19
		> 3	15
1.25	LGA_125	< 2.5	50
		2.5 - 3.75	44
		> 3.75	33
1.50	LGA_150	< 3	71
		3 - 4.5	62
		> 4.5	47
1.75	LGA_175	< 3.5	111
		3.5 - 5.25	97
		> 5.25	73
2.00	LGA_200	< 4	186
		4 - 6	162
		> 6	122

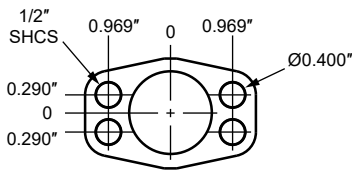
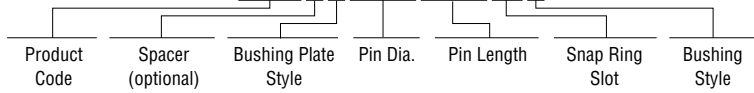
LGA__100 — Guided Retainer with 1.00 Inch Dia. Pin

How to Order

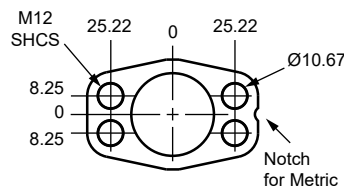
- Optionally choose a spacer plate (S) for retrofitting an existing tool.
- Choose a metric (M) or English inch (E) mount bushing plate.
- Choose a pin length from 3.50 to 16.00 in 1/8 inch increments.
- Use the table below to choose the snap ring slot number.
- Choose a short (S) or long (L) bushing.
- Two load plates are included, hardened to 28-34 HRc.
- Socket Head Cap Screws not included.

Example Part Callout

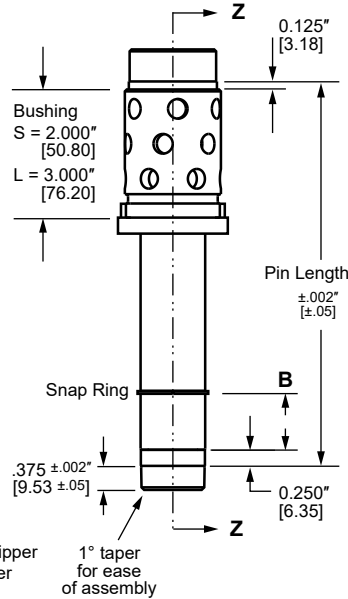
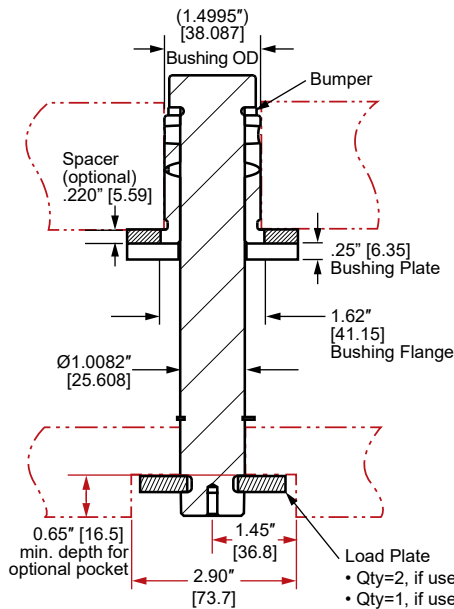
LGASE100-575-3-S



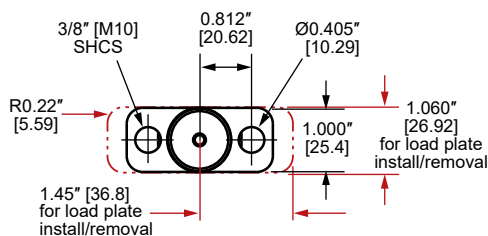
INCH MOUNT BUSHING PLATE



METRIC MOUNT BUSHING PLATE



SECTION Z-Z



Snap Ring Positions

B	Slot
.50	1
.75	2
1.00	3
1.25	4
1.50	5
2.00	6

Bore Sizes

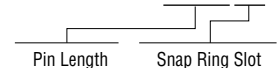
Pin	1.009 - 1.010" [25.63 - 25.65]
Bushing	1.500 - 1.501" [38.10 - 38.12]

Replacement Parts

Part #	Description
LGS-100	Spacer Plate
LGSR-100	Snap Ring
LGR-100	Load Plate
LGD-100	Bumper Washer
LGBPE-100	Bushing Plate, English Mount
LGBPM-100	Bushing Plate, Metric Mount
LGB100-S	Bushing, 2.000" Length
LGB100-L	Bushing, 3.000" Length
LGP-100-xxx-x*	Pin

*Example Pin Replacement Callout

LGP-100-575-5



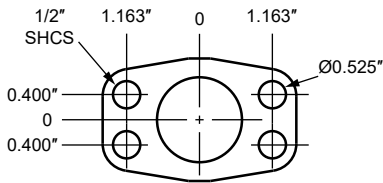
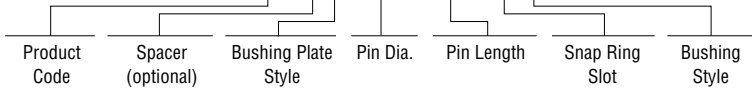
LGA__125 — Guided Retainer with 1.25 Inch Dia. Pin

How to Order

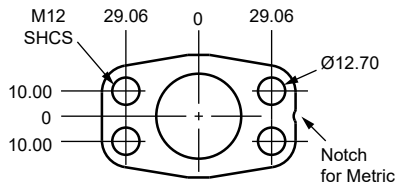
- Optionally choose a spacer plate (S) for retrofitting an existing tool.
- Choose a metric (M) or English inch (E) mount bushing plate.
- Choose a pin length from 3.75 to 16.00 in 1/8 inch increments.
- Use the table below to choose the snap ring slot number.
- Choose a short (S) or long (L) bushing.
- Two load plates are included, hardened to 28-34 HRC.
- Socket Head Cap Screws not included.

Example Part Callout

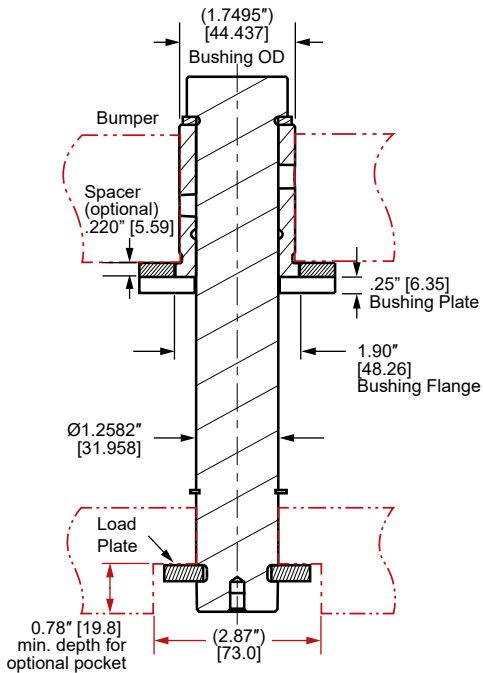
LGASM125-575-5-L



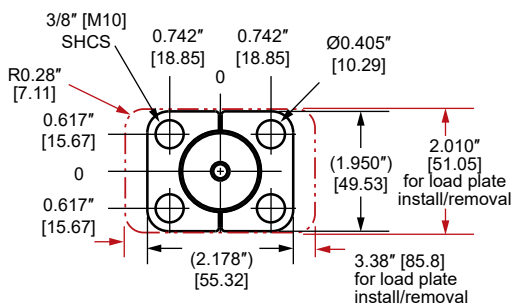
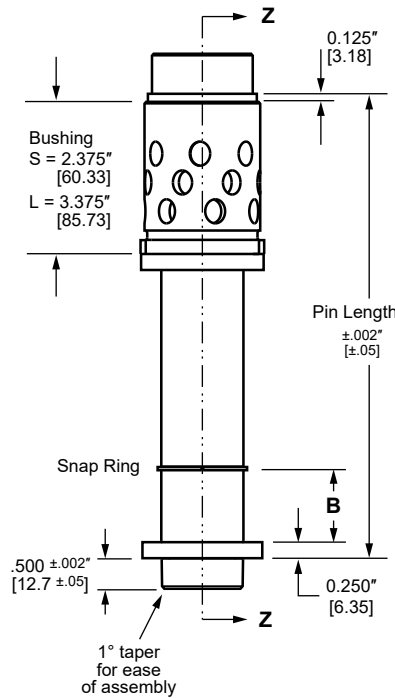
INCH MOUNT BUSHING PLATE



METRIC MOUNT BUSHING PLATE



SECTION Z-Z



Snap Ring Positions

B	Slot
.50	1
.75	2
1.00	3
1.25	4
1.50	5
2.00	6

Bore Sizes

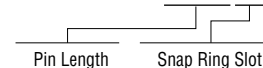
Pin	1.259 - 1.260" [31.98 - 32.00]
Bushing	1.750 - 1.751" [44.45 - 44.47]

Replacement Parts

Part #	Description
LGS-125	Spacer Plate
LGSR-125	Snap Ring
LGR-125	Load Plate
LGD-125	Bumper Washer
LGBPE-125	Bushing Plate, English Mount
LGBPM-125	Bushing Plate, Metric Mount
LGB125-S	Bushing, 2.375" Length
LGB125-L	Bushing, 3.375" Length
LGP-125-xxx-x*	Pin

*Example Pin Replacement Callout

LGP-125-575-5



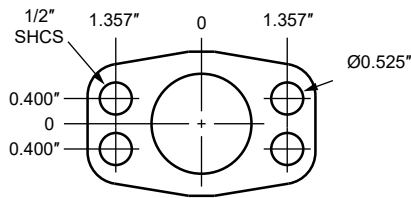
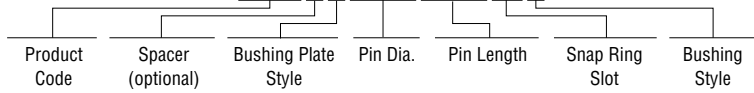
LGA__150 — Guided Retainer with 1.50 Inch Dia. Pin

How to Order

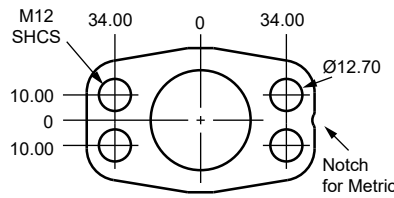
- Optionally choose a spacer plate (S) for retrofitting an existing tool.
- Choose a metric (M) or English inch (E) mount bushing plate.
- Choose a pin length from 3.75 to 16.00 in 1/8 inch increments.
- Use the table below to choose the snap ring slot number.
- Choose a short (S) or long (L) bushing.
- Two load plates are included, hardened to 28-34 HRc.
- Socket Head Cap Screws not included.

Example Part Callout

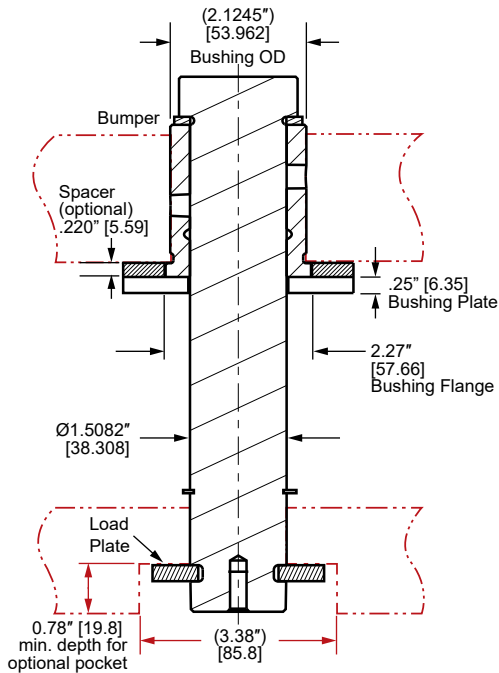
LGASM150-575-5-L



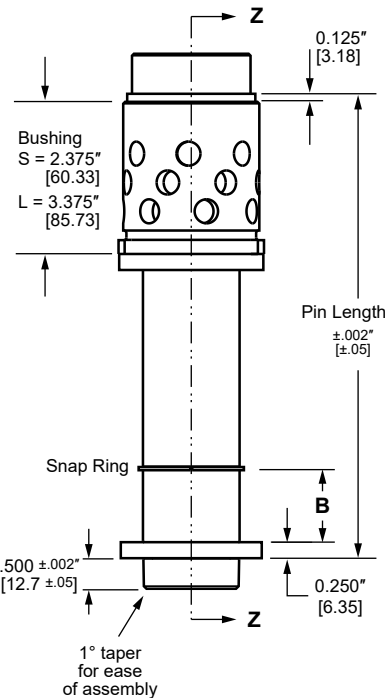
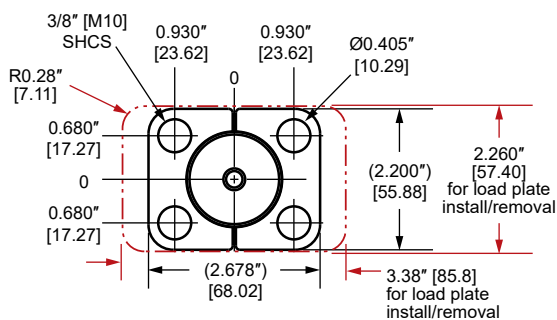
INCH MOUNT BUSHING PLATE



METRIC MOUNT BUSHING PLATE



SECTION Z-Z



Snap Ring Positions

B	Slot
.50	1
.75	2
1.00	3
1.25	4
1.50	5
2.00	6

Bore Sizes

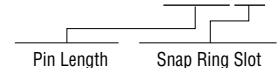
Pin	1.509 - 1.510" [38.33 - 38.35]
Bushing	2.125 - 2.126" [53.98 - 54.00]

Replacement Parts

Part #	Description
LGS-150	Spacer Plate
LGSR-150	Snap Ring
LGR-150	Load Plate
LGD-150	Bumper Washer
LGBPE-150	Bushing Plate, English Mount
LGBPM-150	Bushing Plate, Metric Mount
LGB150-S	Bushing, 2.375" Length
LGB150-L	Bushing, 3.375" Length
LGP-150-xxx-x*	Pin

*Example Pin Replacement Callout

LGP-150-575-5



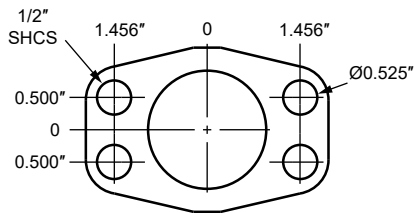
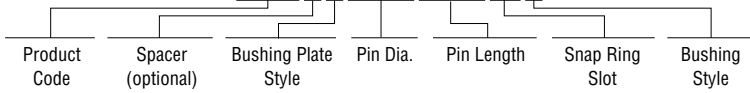
LGA__175 — Guided Retainer with 1.75 Inch Dia. Pin

How to Order

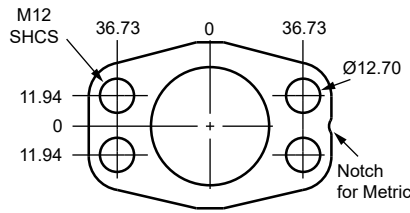
- Optionally choose a spacer plate (S) for retrofitting an existing tool.
- Choose a metric (M) or English inch (E) mount bushing plate.
- Choose a pin length from 3.75 to 16.00 in 1/8 inch increments.
- Use the table below to choose the snap ring slot number.
- Choose a short (S) or long (L) bushing.
- Two load plates are included, hardened to 28-34 HRC.
- Socket Head Cap Screws not included.

Example Part Callout

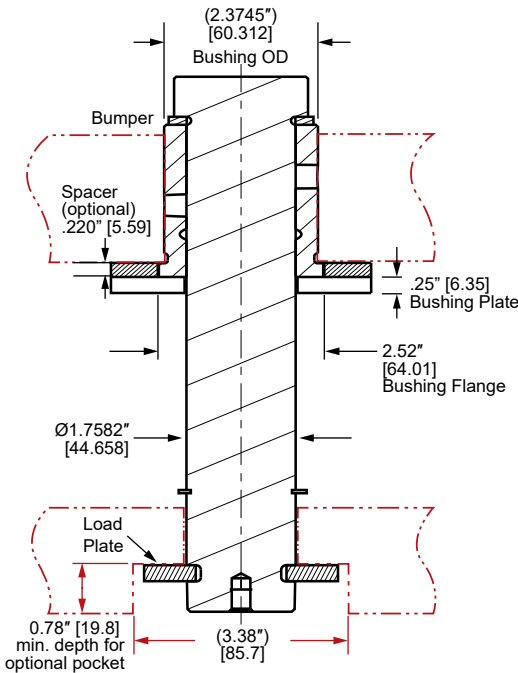
LGASM175-575-5-L



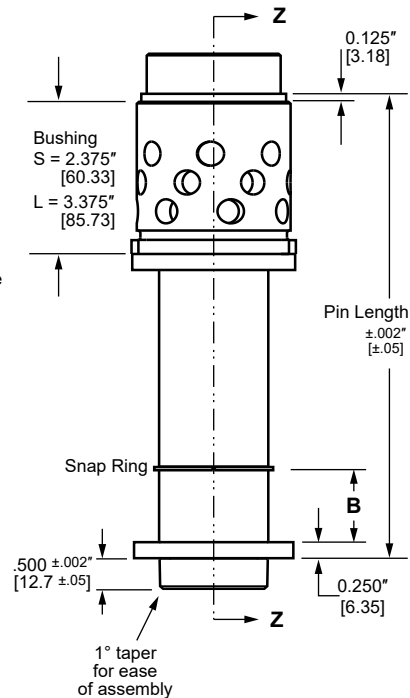
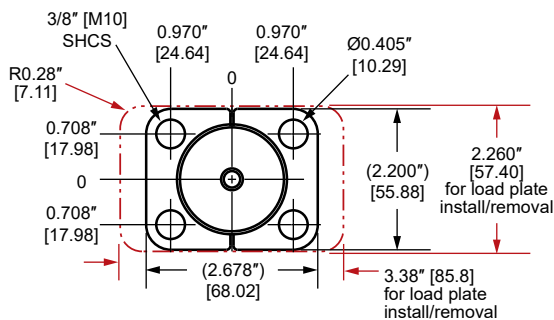
INCH MOUNT BUSHING PLATE



METRIC MOUNT BUSHING PLATE



SECTION Z-Z



Snap Ring Positions

B	Slot
.50	1
.75	2
1.00	3
1.25	4
1.50	5
2.00	6

Bore Sizes

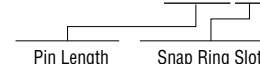
Pin	1.759 - 1.760" [44.68 - 44.70]
Bushing	2.375 - 2.376" [60.33 - 60.35]

Replacement Parts

Part #	Description
LGS-175	Spacer Plate
LGR-175	Snap Ring
LGB-175	Load Plate
LGD-175	Bumper Washer
LGBPE-175	Bushing Plate, English Mount
LGBPM-175	Bushing Plate, Metric Mount
LGB175-S	Bushing, 2.375" Length
LGB175-L	Bushing, 3.375" Length
LGP-175-xxx-x*	Pin

*Example Pin Replacement Callout

LGP-175-575-5



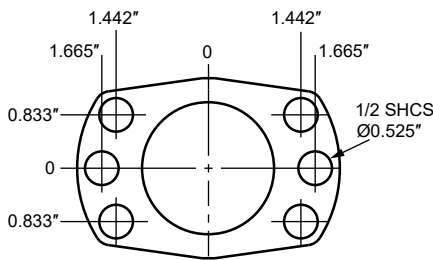
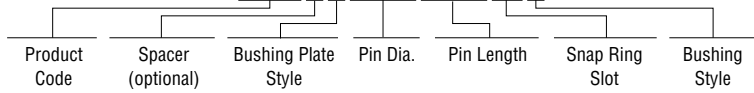
LGA_200 — Guided Retainer with 2.00 Inch Dia. Pin

How to Order

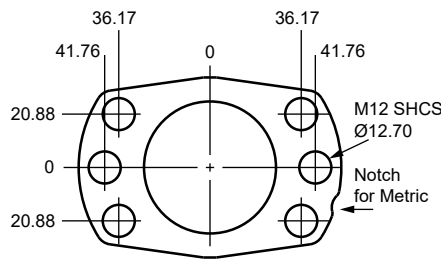
- Optionally choose a spacer plate (S) for retrofitting an existing tool.
- Choose a metric (M) or English inch (E) mount bushing plate.
- Choose a pin length from 5.00 to 16.00 in 1/8 inch increments.
- Use the table below to choose the snap ring slot number.
- Choose a short (S) or long (L) bushing.
- Two load plates are included, hardened to 28-34 HRC.
- Socket Head Cap Screws not included.

Example Part Callout

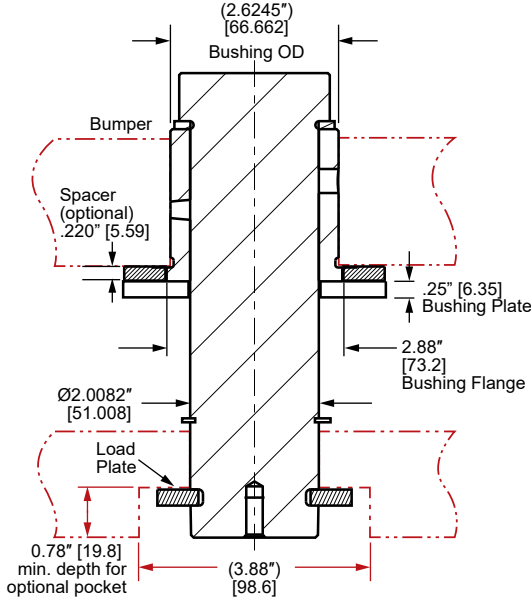
LGASE200-875-5-S



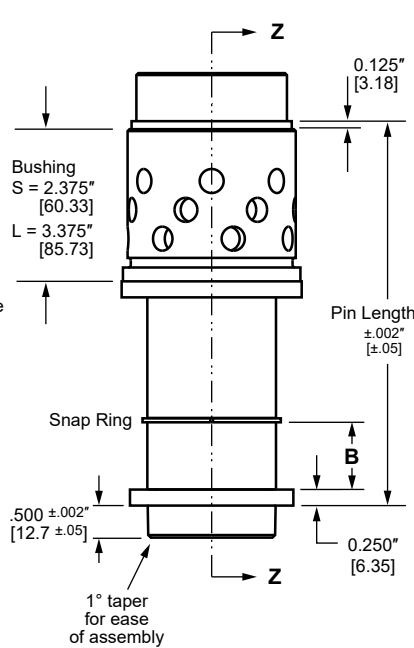
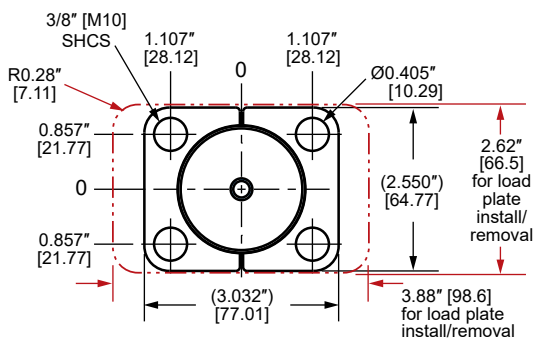
INCH MOUNT BUSHING PLATE



METRIC MOUNT BUSHING PLATE



SECTION Z-Z



Snap Ring Positions

B	Slot
.50	1
.75	2
1.00	3
1.25	4
1.50	5
2.00	6

Bore Sizes

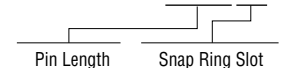
Pin	2.009 - 2.010" [51.03 - 51.05]
Bushing	2.625 - 2.626" [66.68 - 66.70]

Replacement Parts

Part #	Description
LGS-200	Spacer Plate
LGSR-200	Snap Ring
LGR-200	Load Plate
LGD-200	Bumper Washer
LGBPE-200	Bushing Plate, English Mount
LGBPM-200	Bushing Plate, Metric Mount
LGB200-S	Bushing, 2.375" Length
LGB200-L	Bushing, 3.375" Length
LGP-200-xxx-x*	Pin

*Example Pin Replacement Callout

LGP-200-875-5



Commitment to Quality & Customer Satisfaction

Dayton Lamina is a leading manufacturer of tool, die and mold components for the metal-working and plastics industries. As a customer-focused, world-class supplier of choice, we provide the brands, product breadth, distribution network and technical support for all your metal forming needs.

Our goal is to give our customers the most innovative and value-added products and services.



DAYTON Lamina™



Lamina® LEMPCO

*Dayton Lamina's line of Danly products is available only to North America.

www.daytonlamina.com