

AMADA PRESS SYSTEM CO., LTD.

ORII NC Straightener-Feeders



General Catalogue for the Straightener-Feeders
LCC Series





Lineup of the highly reliable **LCC Series** of NC Straightener-Feeders

Material
thickness

Compact Type

P 8 ▶

LCC 03KL

Series

Width: 1.968" ~ 11.811"
Thickness: Max 0.126"



LCC SA

Series

Width: 1.968" ~ 15.748"
Thickness: Max 0.126"



LCC KR3

Series

Width: 1.968" ~ 15.748"
Thickness: Max 0.126"



LCC HF1

Series

Width: 1.968" ~ 23.622"
Thickness: Max 0.126"



P 4 ▶



High-Performance Type



LCC HF4



Series

Width: 1.968" ~ 39.370"
Thickness: Max 0.177"

P 4 ▶



LCE HR3

Series

Width: 2.756" ~ 23.622"
Thickness: Max 0.236"

P 6 ▶



LCC 92HT

Series

Width: 2.756" ~ 9.842"
Thickness: Max 0.236"

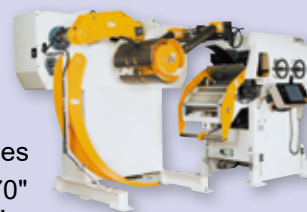
P 5 ▶

LCC HY

Series

Width: 1.968" ~ 39.370"
Thickness: Max 0.177"

P 5 ▶



LCC HR3

Series

Width: 2.756" ~ 51.181"
Thickness: Max 0.236"

P 6 ▶



LCC HL

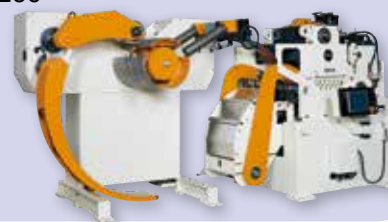
Series

Width: 2.756" ~ 51.181"
Thickness: Max 0.236"

P 7 ▶



Optional



Heavy-Duty Type

P 9 ▶

LCC GD

Series

Width: 2.756" ~ 31.496"
Thickness: Max 0.472"



LCC PM2

Series



Width: 2.756" ~ 51.181"
Thickness: Max 0.354"

Material
width

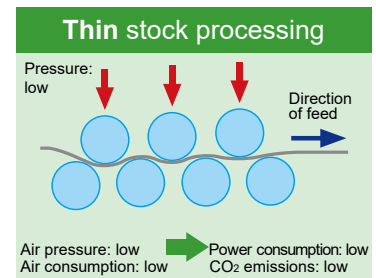
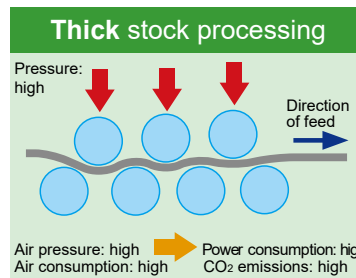
The **ORII** brand, which incorporates high technology and abundant experience, provides a wide variety of options for the diverse needs of our customers.



Energy saving of up to 50% by the ECO Release mechanism



The ECO Release mechanism contributes to energy savings. Since it is possible to control the optimum air cylinder pressure according to the processing material and plate thickness, power consumption can be reduced by up to about 50%.



TP-CCS control system with a user-friendly touch screen

Required information for setup, operation, maintenance, etc. is centrally managed in the four basic modes of setting, setup, operation, and maintenance. It is a total operation system equipped with various functions to support diversification and sophistication of product processing and shortened work time.

Setting



Setup



Operation



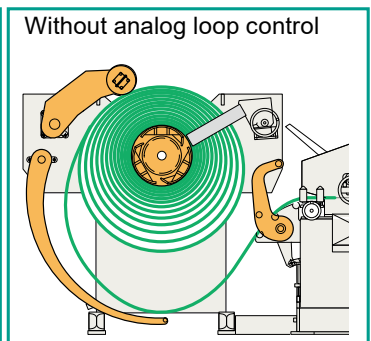
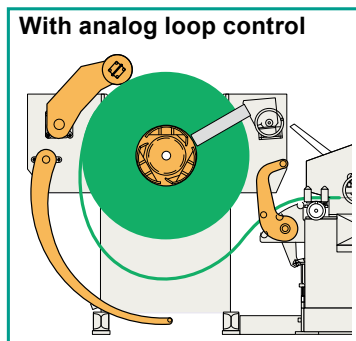
Maintenance



Improved product quality and simplified setup with analog loop control

Analog loop control is a function that converts the loop control of the uncoiler into analog and synchronizes the unwinding speed of the coil with the line speed.

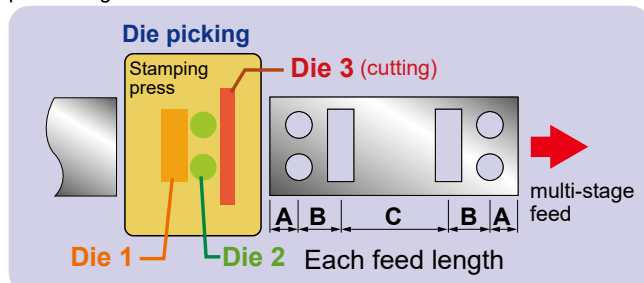
During automatic operation, the uncoiler keeps rotating at a constant speed without stopping, preventing the coil material from unraveling uncontrollably and promoting stable processing. This prevents scratches on the coil material, improving product quality and the life of parts, and simplifies coil material replacement.



Diverse processing with multistage die picking

We have introduced our unique rationalization know-how to meet the strong needs of a multi-stage feeding system for stamping press machines.

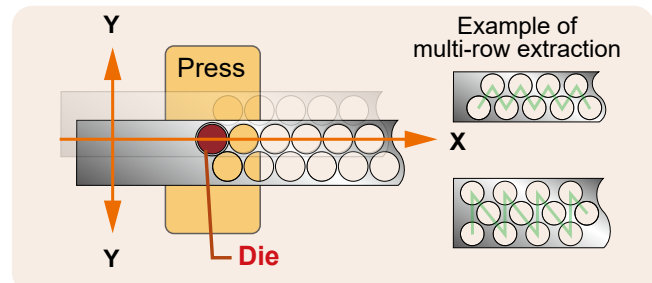
This is a function to set the feed length, die selection, etc. for each stage and operation of the machine. Up to 99 steps can be set for each product. The number of repetitions and the synchronization signal to the press can also be set, supporting a wide variety of processing.



Yield improvement with zigzag feeding system

It greatly improves the yield and reduces the material cost.

This is an optional feed system that enables zigzag feeding, which will reduce the generation of scrap material and cost, and is environmentally conscious.





A lineup of NC Straighter-Feeders, from space-saving to

High-Performance Type

LCC HF1 Series

Width: 1.968" ~ 23.622"
Thickness: Max 0.126"



This is an economical model that takes advantage of on-site needs.

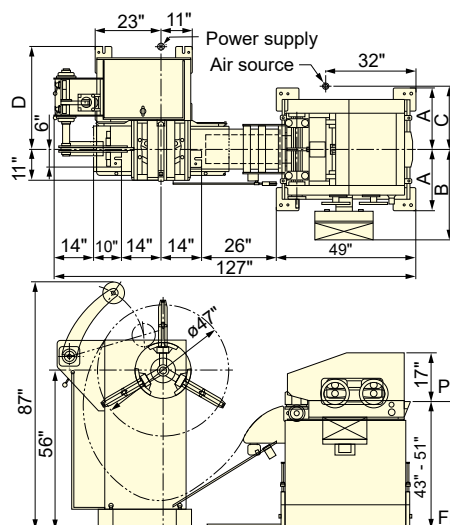


It is an intelligent high-performance type equipped with a **TP-CCS** control system that realizes total operation.

Main dimensions



LCC HF1 type



Model name	A	B	C	D
LCC04HF1	21"	31"	22"	35"
LCC05HF1	23"	33"	24"	37"
LCC06HF1	25"	35"	26"	39"

The path line can be adjusted in the range of 43" - 51".

LCC HF4/HF2 Series

Series

Width: 1.968" ~ 39.370"
Thickness: Max 0.177"



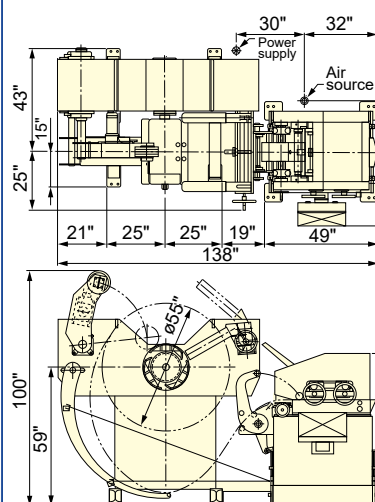
This is a highly operable and reliable model that allows material to be passed through with a simple button operation.



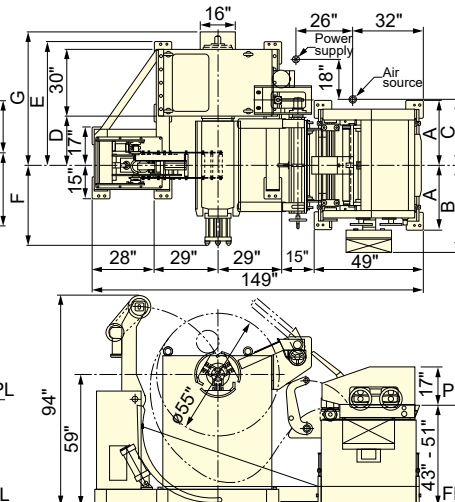
Main dimensions



LCC HF4 type



LCC HF2 type*



*The figure shows the hydraulic expansion / contraction cylinder specifications.

The air expansion / contraction cylinder specifications are different from the above figure.

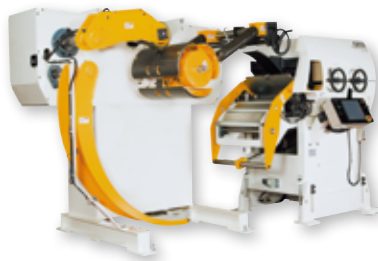
High-Performance Type

large-scale, which streamlines stamping press processing

LCC HY Series

Width: 1.968" ~ 39.370"
Thickness: Max 0.177"

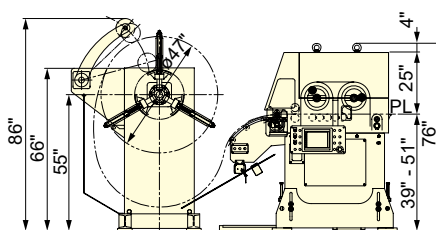
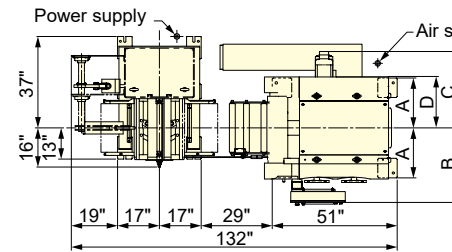
High-precision leveling is achieved by using 11 work rolls.



Main dimensions

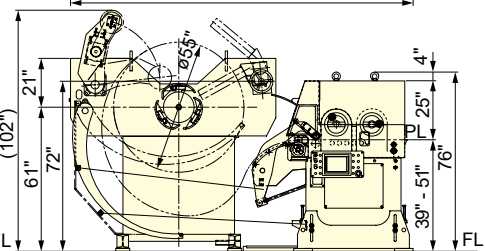
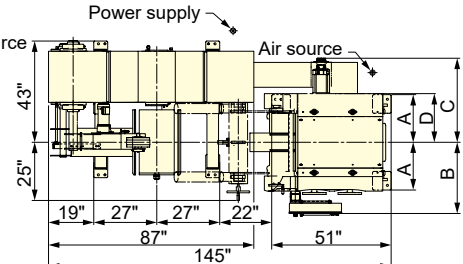


LCC HY1 type



Model name	A	B	C	D
LCC05HY1	20"	(30")	31"	23"
LCC06HY1	22"	(32")	33"	25"

LCC HY2 type



Model name	A	B	C	D
LCC05HY2	20"	(30")	36"	20"
LCC06HY2	22"	(32")	38"	22"
LCC08HY2	26"	(36")	42"	26"
LCC10HY2	30"	(40")	45"	30"

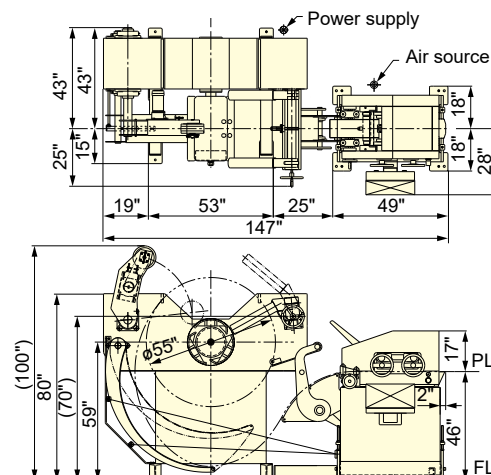
LCC 92HT Series

Width: 2.756" ~ 9.842"
Thickness: Max 0.236"

This is ideal for material for small parts and saving space.



Main dimensions





LCC HR3 Series

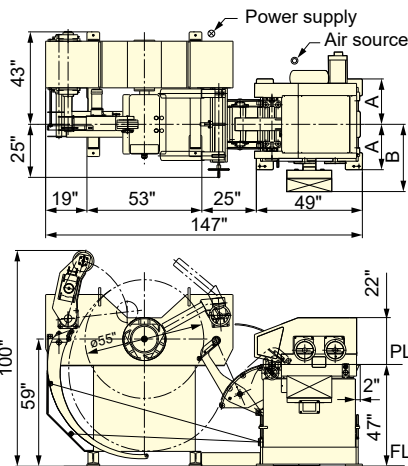
Width: 2.756" ~ 51.181"
Thickness: Max 0.236"



LCC HR3 Series realizes productivity and operability by condensing high versatility in a compact size.

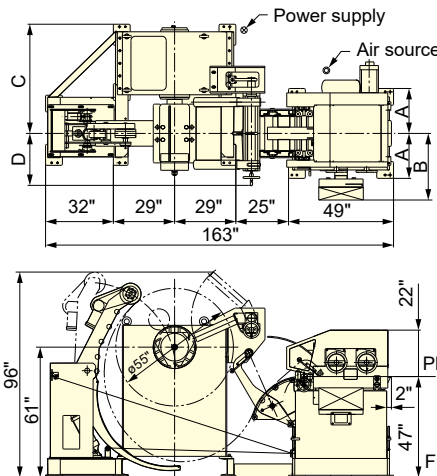
Main dimensions

EAS type (Max coil mass: 6614 lbs)



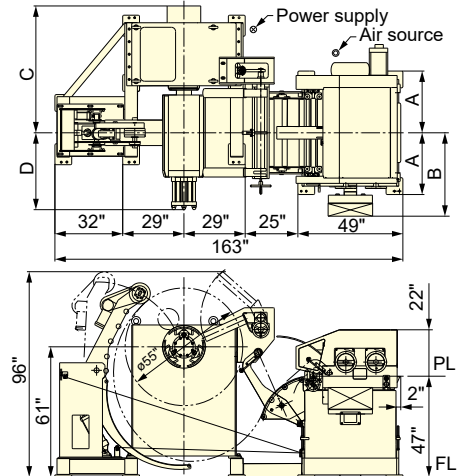
Model name	A	B
LCC04HR3/EAS	21"	31"
LCC05HR3/EAS	23"	33"
LCC06HR3/EAS	25"	35"

VAS type (Max coil mass: 11023 lbs)



Model name	A	B	C	D
LCC04HR3/VAS	21"	31"	51"	24"
LCC05HR3/VAS	23"	33"	51"	24"
LCC06HR3/VAS	25"	35"	51"	24"
LCC08HR3/VAS	29"	39"	55"	29"

MHS type (Max coil mass: 15432 lbs)



Model name	A	B	C	D
LCC08HR3/MHS	29"	39"	59"	36"
LCC10HR3/MHS	33"	43"	63"	38"
LCC13HR3/MHS	39"	49"	69"	46"

LCE HR3 Series

Width: 2.756" ~ 23.622"
Thickness: Max 0.236"



With just a one-button operation, coil material threading and loop formation have been automated. Achieves both improved work setup and high economic efficiency.

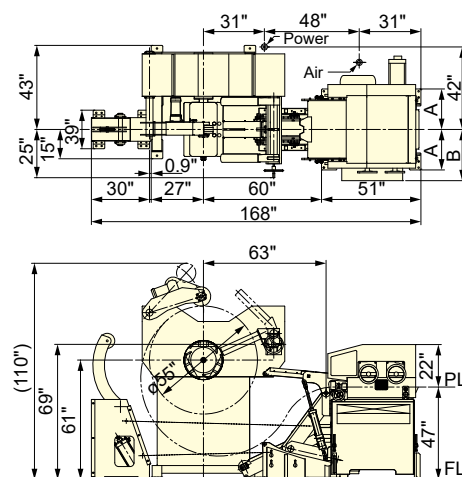


Main dimensions

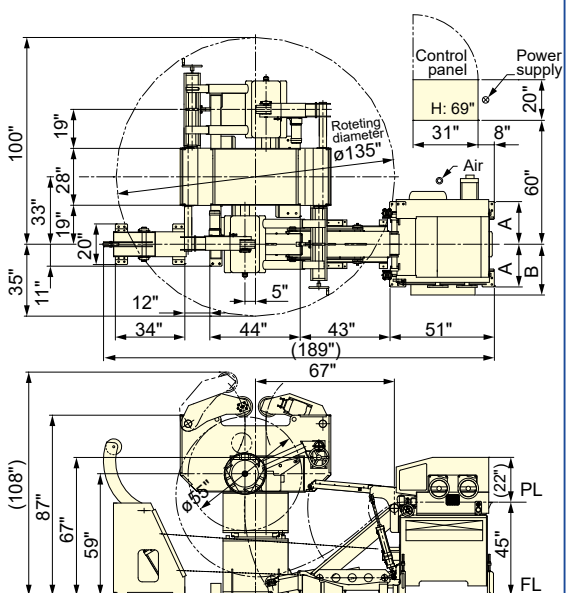


LCE 04/05/06 HR3-EAS single type

Model name	A	B
LCE04HR3-EAS/EVAS	17"	22"
LCE05HR3-EAS/EVAS	19"	24"
LCE06HR3-EAS/EVAS	21"	26"



LCE 04/05/06 HR3-EVAS double type



High-Performance Type

LCC HL

Series

Main dimensions

Optional



Width: 2.756" ~ 51.181"
Thickness: Max 0.236"



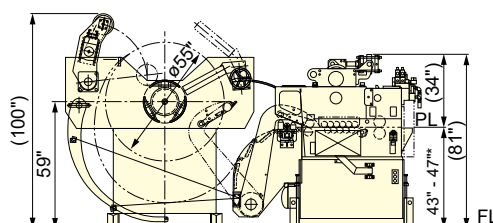
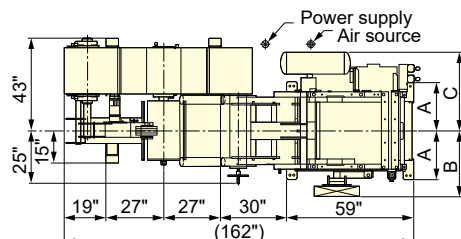
This achieves excellent flatness by utilizing 11 work rolls.

The HLU type can straighten high-tensile materials by adopting an all-roll drive system and strengthening the frame rigidity.



LCC HLS-EAS type

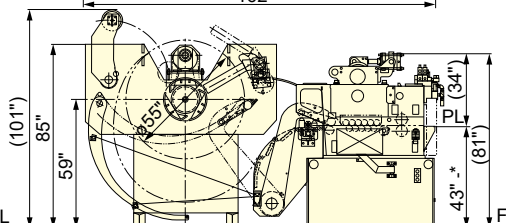
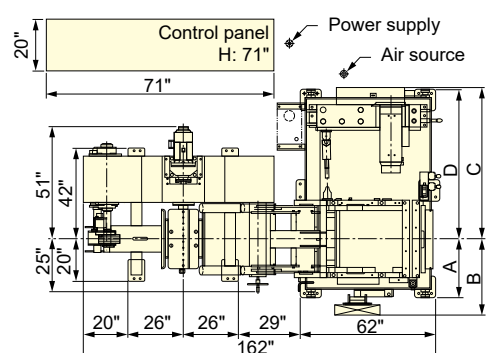
The standard LCC HLS Series has a control panel built into the uncoiler. Depending on a customer's request, the control panel can be separated from the uncoiler.



Model name	A	B	C
LCC06HLS-EAS	23"	31"	36"
LCC08HLS-VAS	27"	35"	40"
LCC10HLS-MHS	31"	38"	44"
LCC13HLS-MHS	36"	44"	50"

* It is possible to adjust the pass line height with a spanner on the jack bolt. The lowest pass line is 43".

LCC HLU-EAS type



Model name	A	B	C	D
LCC06HLU-EAS	27"	35"	70"	69"
LCC08HLU-VAS	31"	37"	74"	73"
LCC10HLU-MHS	35"	41"	78"	77"
LCC13HLU-MHS	41"	47"	83"	83"

* The pass line is fixed at a height specified by the user and cannot be adjusted afterwards. Pass line can be set at a height from 43" or higher.



LCE HR3 Series
Double uncoiler type



LCC HR3 Series



Compact Type

Meets the need for high performance and saving space.

LCC KR3 Series

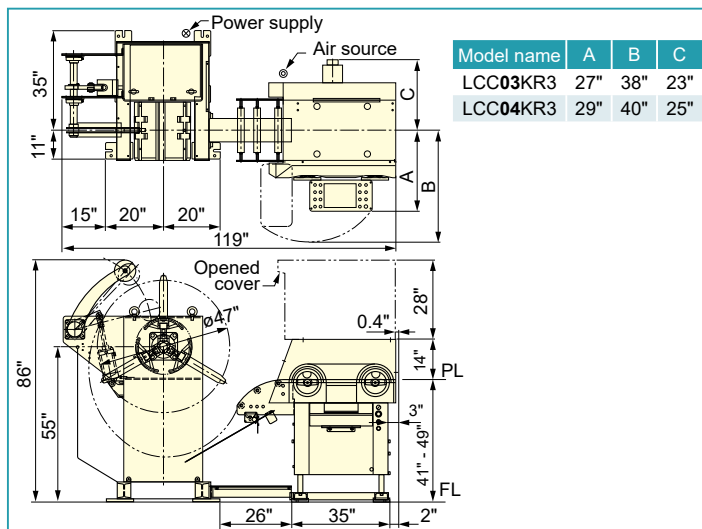
Width: 1.968" ~ 15.748"

Thickness: Max 0.126"

This is a compact best-selling model, which promotes space saving and high performance. Maintenance, including roll cleaning, has been made easy by making it possible to open the cover over the straightener to access the inside.



Main dimensions



LCC 03KL Series

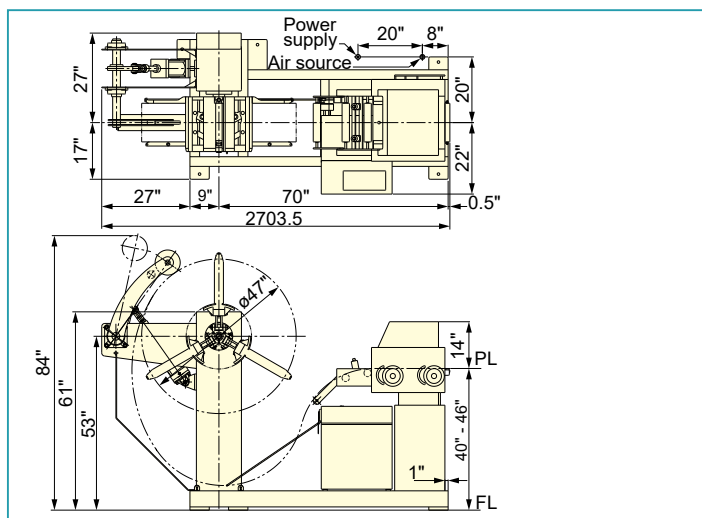
Width: 1.968" ~ 11.811"

Thickness: Max 0.126"

This is a model that pursues economic efficiency by simplifying and downsizing to the utmost limit.



Main dimensions

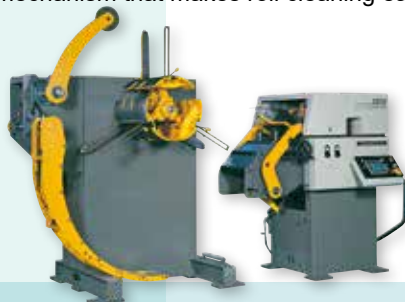


LCC SA Series

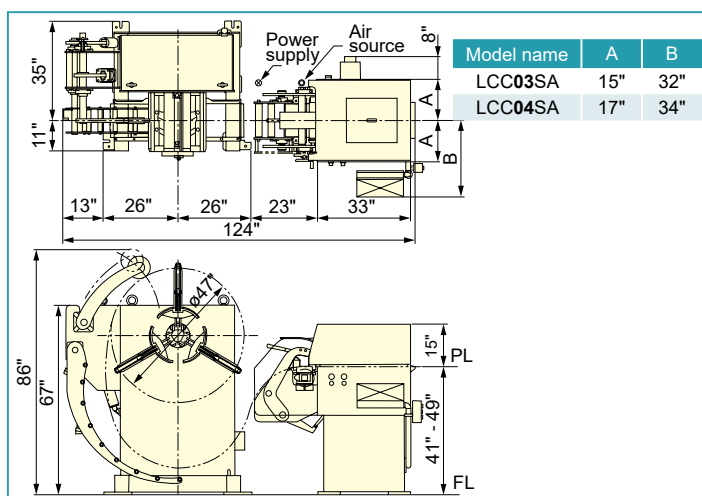
Width: 1.968" ~ 15.748"

Thickness: Max 0.126"

This is a compact model equipped with ASC control (which detects the outer diameter of the coil material and automatically changes the amount of correction), 11 work rolls to improve flatness, and a motor-controlled cover opening mechanism that makes roll cleaning easy.



Main dimensions



Heavy-Duty Type

Heavy-Duty Type

A heavy-duty type that emphasizes high rigidity.

LCC PM2

Series

Main dimensions

Width: 2.756" ~ 51.181"

Thickness: Max 0.354"



Optional

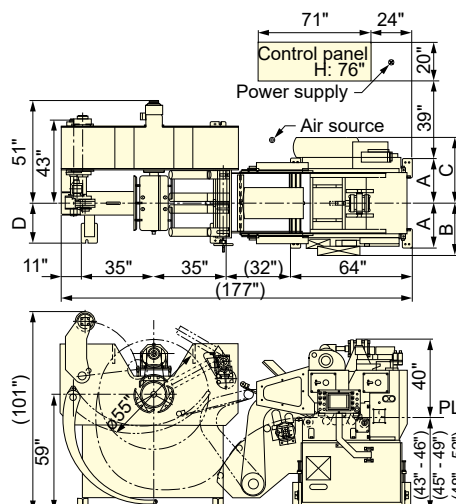
Flatness is improved with 9 work rolls. By incorporating a roll cleaning opening system, maintenance is easier and quality is improved.



Optional

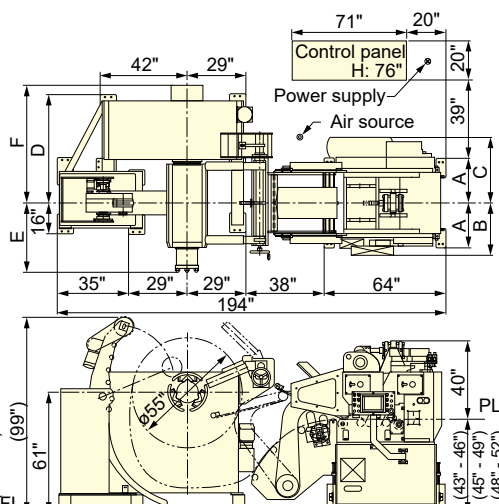


LCC 03/06 PM2 type



Model name	A	B	C	D
LCC03PM2	17"	25"	27"	15"
LCC06PM2	23"	31"	33"	17"

LCC 08/10/13 PM2 type



Model name	A	B	C	D	E	F
LCC08PM2	27"	35"	37"	54"	35"	59"
LCC10PM2	31"	39"	41"	58"	39"	63"
LCC13PM2	36"	45"	47"	64"	45"	69"

LCC GD

Series

Main dimensions

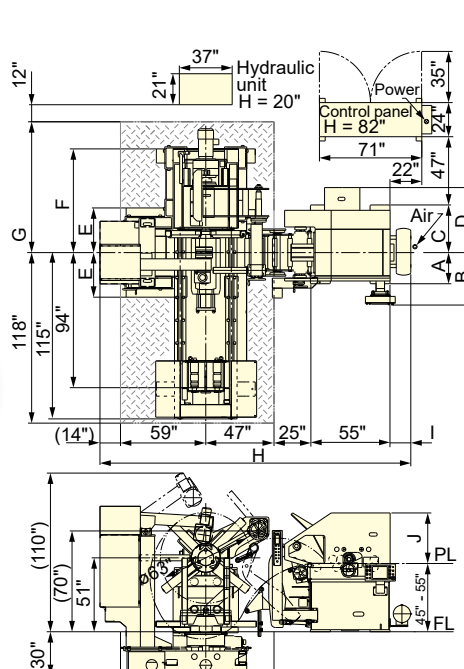
Width: 2.756" ~ 31.496"

Thickness: Max 0.472"

The strongest high-rigidity series that can handle material thicknesses up to 0.472".

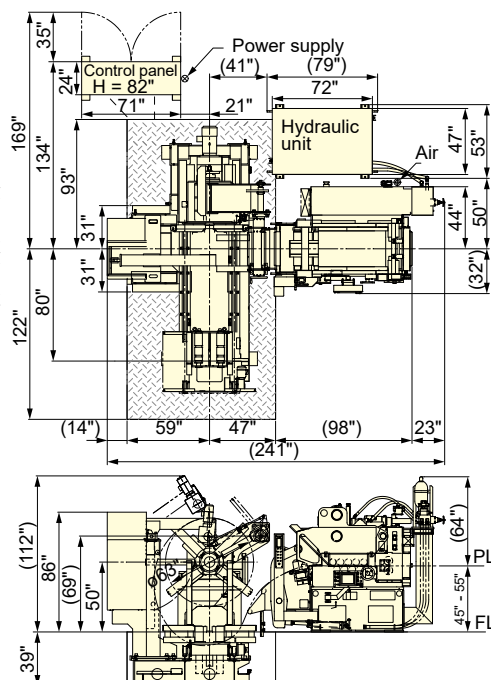


LCC 05/08 GD type



Model name	A	B	C	D	E	F	G	H	I	J
LCC05GD	22"	(36")	33"	45"	31"	67"	91"	(215")	14"	35"
LCC08GD	27"	(42")	39"	50"	37"	78"	93"	(205")	4"	(46")

LCC 06 GD2 type





Specifications

Model name	Stock Thickness	Stock width	Coil mass Max lbs	Outer coil diameter Max	Feed length	Line speed Max ft/min	Number of work roll up /down pcs	Mandrel expansion type
LCC03KR3	0.012" ~ 0.126"	1.968" ~ 11.811"	4409 / 4409	ø47"	~ 15.748"	52.5	6 / 5	Manual / Pneumatic
LCC04KR3		1.968" ~ 15.748"	5511 / 4409					
LCC03KL	0.012" ~ 0.126"	1.968" ~ 11.811"	3307 / 2645	ø47"	~ 11.811"	39.4	3 / 2	Manual / Pneumatic
LCC03SA	0.012" ~ 0.126"	1.968" ~ 11.811"	4409	ø47"	~ 11.811"	52.5	6 / 5	Manual / Pneumatic
LCC04SA		1.968" ~ 15.748"						
LCC04HF1	0.012" ~ 0.126"	1.968" ~ 15.748"	5511 / 4409	ø47"	~ 15.748"	52.5	4 / 3	Manual / Pneumatic
LCC05HF1		1.968" ~ 19.685"	3307 / 4409					
LCC06HF1		1.968" ~ 23.622"	3307 / 2204					
LCC04HF2		1.968" ~ 15.748"						
LCC05HF2		1.968" ~ 19.685"	6614 / 11023					Pneumatic
LCC06HF2		1.968" ~ 23.622"						
LCC08HF2	0.012" ~ 0.177"	1.968" ~ 31.496"	11023 / 15432	ø55"	~ 19.685"	78.7	4 / 3	Pneumatic / Hydraulic
LCC10HF2		1.968" ~ 39.370"	15432					Hydraulic
LCC04HF4		1.968" ~ 15.748"						
LCC05HF4		1.968" ~ 19.685"						
LCC06HF4		1.968" ~ 23.622"						
LCC05HY1	0.012" ~ 0.126"	1.968" ~ 19.685"	4409 / 3307	ø47"	~ 15.748"	52.5		Manual / Pneumatic
LCC06HY1		1.968" ~ 23.622"	3307 / 2204					
LCC05HY2-E		1.968" ~ 19.685"	6614					
LCC05HY2-V		11023						
LCC06HY2-E	0.012" ~ 0.177"	1.968" ~ 23.622"	6614	ø55"	~ 19.685"	78.7	6 / 5	Pneumatic
LCC06HY2-V		11023						
LCC08HY2-V		1.968" ~ 31.496"						
LCC08HY2		1.968" ~ 31.496"						
LCC10HY2		1.968" ~ 39.370"	15432					Hydraulic
LCC92HT	0.047" ~ 0.236"	2.756" ~ 9.842"	5511	ø55"	~ 19.685"	72.2	3 / 2	Pneumatic
LCE04HR3-E		2.756" (3.937") ~ 15.748"	6614					
LCE04HR3-V								
LCE05HR3-E	0.023" (0.039") ~ 0.236"	2.756" (3.937") ~ 19.685"		ø55"	~ 19.685"	72.2	4 / 3	Pneumatic
LCE05HR3-V		11023						
LCE06HR3-E		2.756" (3.937") ~ 23.622"	6614					
LCE06HR3-V		11023						
LCC04HR3-E		2.756" ~ 15.748"	6614					
LCC05HR3-E		2.756" ~ 19.685"						
LCC05HR3-V		11023						Pneumatic
LCC06HR3-E		6614						
LCC06HR3-V	0.023" ~ 0.236"	2.756" ~ 23.622"	11023	ø55.118"	~ 19.685"	72.2	4 / 3	
LCC08HR3-V		2.756" ~ 31.496"						
LCC08HR3		2.756" ~ 39.370"	15432					Hydraulic
LCC10HR3		2.756" ~ 51.181"						
LCC13HR3								
LCC06HLS-E		2.756" ~ 23.622"	6614					Pneumatic
LCC06HLS-V		11023						
LCC08HLS-V	0.023" ~ 0.236"	2.756" ~ 31.496"	11023 / 15432	ø55"	~ 19.685"	72.2	6 / 5	Pneumatic / Hydraulic
LCC10HLS		2.756" ~ 39.370"	15432					Hydraulic
LCC13HLS		2.756" ~ 51.181"						
LCC06HLU-E		2.756" ~ 23.622"	6614					Pneumatic
LCC06HLU-V		11023						
LCC08HLU-V	0.023" ~ 0.236"	2.756" ~ 31.496"	11023 / 15432	ø55"	~ 19.685"	72.2	4 / 3	Pneumatic / Hydraulic
LCC10HLU		2.756" ~ 39.370"	15432					Hydraulic
LCC13HLU		2.756" ~ 51.181"						
LCC03PM2-E		2.756" ~ 11.811"	6614					Pneumatic
LCC06PM2-E		2.756" ~ 23.622"						
LCC06PM2-V	0.032" ~ 0.354"	11023	11023 / 15432	ø55"	~ 19.685"	72.2	5 / 4	Pneumatic / Hydraulic
LCC08PM2-V		2.756" ~ 31.496"						
LCC10PM2		2.756" ~ 39.370"	15432					Hydraulic
LCC13PM2		2.756" ~ 51.181"						
LCC05GD	0.055" ~ 0.472"	2.756" ~ 19.685"	11023	ø63"	~ 19.685"	59.1	3 / 3	Hydraulic
LCC08GD		2.756" ~ 31.496"						
LCC06GD2		2.756" ~ 23.622"					5 / 4	

Optional Feed Master function is available for feed lengths that exceed standard specifications.

The values with () are for automatic coil material threading type.

The values in the table above are for the single uncoiler type. Please contact us for the double uncoiler type.

If the model name ends -E, it means -EAS. If it ends in -V, it means -EVAS.

Common specifications

- Inner coil diameter: ø20" - Power supply: 200/220 V

- Feed roll: 1 pair

- Air pressure: 0.5 MPa




Straightening performance (Stock width)

Model name	Stock thickness (Measurement unit: Imperial)																		
	0.012	0.023	0.031	0.039	0.047	0.055	0.063	0.071	0.079	0.091	0.098	0.110	0.126	0.157	0.177	0.197	0.236	0.276	0.315
LCC03KR3					11.811				10.630	9.055	7.480	5.906	4.331						
LCC04KR3			15.748			14.173	12.992	10.236	8.661	7.480	6.693	5.906	4.331						
LCC03KL			11.811					10.236	8.661	7.480	6.693	5.906	4.331						
LCC03SA			11.811				10.630	9.055	8.268	6.693	6.299	5.118	4.724						
LCC04SA			15.748		12.992	10.630	9.055	7.874	7.087	5.906	5.512	4.724	3.937						
LCC04HF1			15.748				14.567	11.811	9.055	7.480	5.906	4.331							
LCC05HF1			19.685			18.504	14.567	11.811	9.055	7.480	5.906	4.331							
LCC06HF1			23.622		22.047	18.504	14.567	11.811	9.055	7.480	5.906	4.331							
LCC04HF2			15.748							14.567	12.205	8.661	6.693						
LCC05HF2			19.685					16.535	14.567	12.598	10.630	8.268	6.693						
LCC06HF2			23.622			19.685	17.323	14.567	12.992	11.417	9.843	7.874	6.299						
LCC08HF2		31.496		27.559	22.835	19.291	16.535	14.961	12.598	11.417	10.236	8.661	6.693	5.906					
LCC10HF2		39.370	30.315	24.016	20.079	17.323	14.961	13.386	11.417	10.630	9.449	7.874	6.299	5.512					
LCC04HF4			15.748							14.567	12.205	8.661	6.693						
LCC05HF4			19.685					16.535	14.567	12.598	10.630	8.268	6.693						
LCC06HF4			23.622			19.685	17.323	14.567	12.992	11.417	9.843	7.874	6.299						
LCC05HY1			19.685			18.898	14.961	12.205	9.055	7.480	5.906	4.724							
LCC06HY1			23.622			18.898	14.961	12.205	9.055	7.480	5.906	4.724							
LCC05HY2-E			19.685					16.535	14.961	12.992	11.024	7.480	5.906						
LCC05HY2-V			19.685					16.535	14.961	12.992	11.024	7.480	5.906						
LCC06HY2-E			23.622			20.472	18.11	14.961	13.78	12.205	10.236	7.48	5.906						
LCC06HY2-V			23.622			20.472	18.11	14.961	13.78	12.205	10.236	7.48	5.906						
LCC08HY2-V		31.496		29.528	24.016	20.079	17.717	15.748	13.386	12.205	10.630	9.449	7.087	5.906					
LCC08HY2		31.496		29.528	24.016	20.079	17.717	15.748	13.386	12.205	10.630	9.449	7.087	5.906					
LCC10HY2		39.370	31.890	25.591	21.260	18.110	15.748	14.173	12.205	11.024	9.843	8.661	6.693	5.118					
LCC92HT									9.843					7.874					
LCE04HR3-E							15.748						14.173	11.417	7.874				
LCE04HR3-V							15.748						14.173	11.417	7.874				
LCE05HR3-E							19.685					17.717	14.173	11.417	7.874				
LCE05HR3-V							19.685					17.717	14.173	11.417	7.874				
LCE06HR3-E							23.622					17.717	14.173	11.417	7.874				
LCE06HR3-V							23.622					17.717	14.173	11.417	7.874				
LCC04HR3-E							15.748					14.173	11.417	7.874					
LCC05HR3-E							19.685					17.717	14.173	11.417	7.874				
LCC05HR3-V							19.685					17.717	14.173	11.417	7.874				
LCC06HR3-E							23.622					17.717	14.173	11.417	7.874				
LCC06HR3-V							23.622					17.717	14.173	11.417	7.874				
LCC08HR3-V					31.496						27.953	17.717	14.173	11.417	7.874				
LCC08HR3					31.496						27.953	17.717	14.173	11.417	7.874				
LCC10HR3					39.370					36.614	27.953	17.717	14.173	11.417	7.874				
LCC13HR3					51.181			46.063	36.614	27.953	17.717	14.173	11.417	7.874					
LCC06HLS-E	(23.622)	(23.622)	23.622	19.685	16.929	14.567	12.992	11.417	9.843	9.055	7.874	6.693	5.118	4.724	3.937	3.150			
LCC06HLS-V	(23.622)	(23.622)	23.622	19.685	16.929	14.567	12.992	11.417	9.843	9.055	7.874	6.693	5.118	4.724	3.937	3.150			
LCC08HLS-V	31.496	(29.921)	23.622	19.685	16.535	14.567	12.598	11.417	9.843	8.661	7.874	6.693	5.118	4.331	3.937	3.150			
LCC10HLS	39.370	(29.921)	23.622	19.291	16.535	14.567	12.598	11.417	9.843	8.661	7.874	6.693	5.118	4.331	3.937	3.150			
LCC13HLS	39.764	(29.528)	23.228	19.291	16.142	14.173	12.598	11.024	9.449	8.661	7.480	6.693	5.118	4.331	3.937	3.150			
LCC06HLU-E	23.622		23.622					21.654	18.504	14.567	11.024	7.087	5.512	4.331	3.150				
LCC06HLU-V	23.622		23.622					21.654	18.504	14.567	11.024	7.087	5.512	4.331	3.150				
LCC08HLU-V	31.496		31.496			27.953	28.740	21.654	18.504	14.567	11.024	7.087	5.512	4.331	3.150				
LCC10HLU	39.370		39.370		37.008	23.622	28.740	21.654	18.504	14.567	11.024	7.087	5.512	4.331	3.150				
LCC13HLU	51.181		51.181	50.000	42.520	37.008	27.953	28.740	21.654	18.504	14.567	11.024	7.087	5.512	4.331	3.150			
LCC03PM2-E								11.811								9.961	7.874		
LCC06PM2-E							23.622							17.717	12.992	9.843	7.874		
LCC06PM2-V							23.622							17.717	12.992	9.843	7.874		
LCC08PM2-V							31.496							25.197	17.717	12.992	9.843	7.874	
LCC10PM2							39.370							31.496	25.197	17.717	12.992	9.843	7.874
LCC13PM2							51.181							39.764	31.496	25.197	17.717	12.992	9.843
LCC05GD						(19.685)					19.685						18.898	15.354	12.598
LCC08GD						(31.496)					31.496					29.921	24.016	18.898	15.354
LCC06GD2											23.622						18.898	15.354	12.598

The above table is for materials having yield strength of 245 MPa.
The values in the red frame indicate materials having yield strength of 613 MPa.
If the mode name ends -E, it means -EAS. If it ends in -V, it means -EVAS.



Main equipment

Equipment	Model name													
	KL	KR3	SA	HF1	HF2 HF4	HY1	HY2	HT	HR3	LCE HR3	HLS HLU	PM2	GD	GD2
Master control for continuous operation	○	○	○	○	○	○	○	○	○	○	○	○	○	○
Remote control switch	●	●	●	●	●	●	●	●	●	●	●	●	●	●
Select switch for feed angle	○	○	○	○	○	○	○	○	○	○	○	○	○	○
Loop abnormality detector		●	●	●	●	●	●	●	●	●	●	●	●	●
Loop contact sensor	○	○	○	○	○	○	○	○	○	○	○	○	○	○
Loop photoelectric sensor		○	●	○	●	○	●	●	●	●	●	●	●	●
Programmable die	○	○	○	○	○	○	○	○	○	○	○	○	○	○
Die picking 	○	○	○	○	○	○	○	○	○	○	○	○	○	○
Digital cam switch	○	○	○	○	○	○	○	○	○	○	○	○	○	○
Coil hold down roll drive		○		○	●	○	●	●	●	●	●	●	●	●
Handwheel adjustment for stock guides		○	●	●	●	●	●	●	●	○	●	●	●	●
Hard chrome plates roll	○	○	○	○	○	○	○	○	○	○	○	● ^{*3}	● ^{*3}	● ^{*3}
Special paint ^{*4}	○	○	○	○	○	○	○	○	○	○	○	○	○	○
Pneumatic expansion system		○	●	○	● ^{*1}	○	●	●	● ^{*1}	● ^{*1}	● ^{*1}	●		
Hydraulic expansion system					● ^{*1}		●		● ^{*1}	● ^{*1}	● ^{*1}	● ^{*1}	●	●
Back up roll									●	●	●	●	● ^{*2}	●
Unbending system		○												
Lube system	○	○	○	○	○	○	○	○	○	○	○	○	○	○
Roll type coil side guide		○	○	○	●	○	●	●	●	●	●	●	●	●
Threading table		○	●	○	●	○	●	●	●	●	●	●		
End of stock detector	●	●	●	●	●	●	●	●	●	●	●	●	●	●
Pilot roll		●	●	●	●	●	●	●			●	●	●	●
Roll cleaning opening system			●	○	○			○			●	●		●
Roll cleaning open structure		●				●	●							
Job number setting		●	●	●	●	●	●	●	●	●	●	●	●	●
ASC control			●	○	○	○	○	○	○	○	●	○	○	●
Coil car		○		○	○	○	○	○	○	○	○	○	●	●
Analog loop control ^{*5} 					○		○	○	○	○	○	○	○	○
Automatic threading										○				
ECO release 				●	●				●	●	○	○		

● Standard
○ Optional

^{*1} Hydraulic expansion for stock width over 39.370" or coil mass over 15432 lbs, pneumatic expansion for stock width less than 31.496".

^{*2} Only 08GD

^{*3} Hard chrome plating finished

^{*4} Some parts cannot be specified.

^{*5} Applicable only to TP-CCS controller



Before using those products, please read the operator's manual carefully and follow all applicable instructions.

- Options are included in the photos.
- Specifications, appearance, and equipment are subject to change without notice for improvement and other purposes.

Warning: O.S.H.A. - required point of use guards for protecting the operator are not included and are the responsibility of the end user.

©AMADA PRESS SYSTEM CO., LTD. All Rights Reserved.

AMADA PRESS SYSTEM AMERICA INC.

1840 AIRPORT EXCHANGE BLVD #200
ERLANGER, KY. 41018 U.S.A.

Inquiry

